

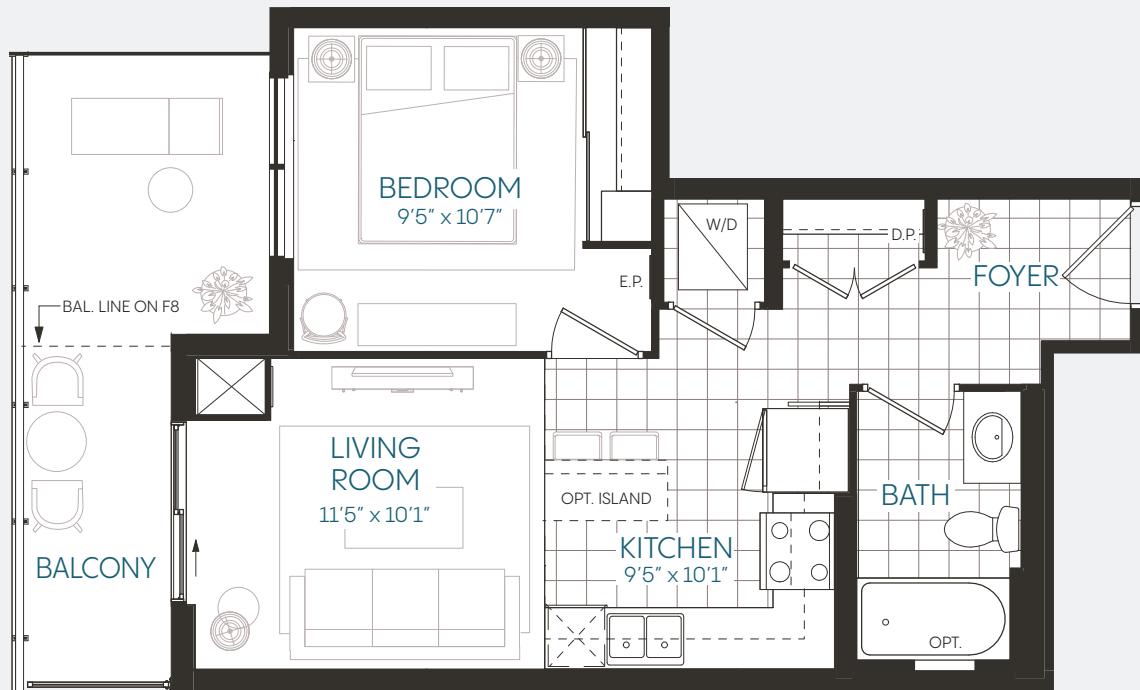
# ANTHEM

AT THE METALWORKS

## SUITE 1B

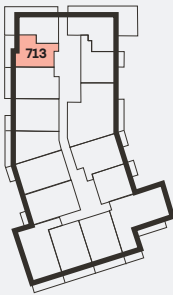
1 Bedroom | 1 Bathroom

Interior 535 sq.ft. (F7&F8)  
Exterior 124 sq.ft. (F7) | 48 sq.ft. (F8)  
**Total 659 sq.ft. (F7) | 583 sq.ft. (F8)**

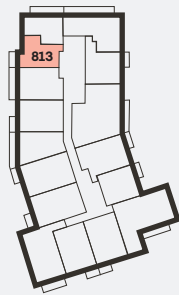


Arthur St. S.

FLOOR 7



FLOOR 8



Speed River

This plan is not to scale and is subject to architectural review and revision, including without limitation, the Unit being constructed with a layout that is the reverse of that set out above. Refer to Draft Condominium Plan in the Disclosure Statement for actual Unit orientation. All details are approximate and subject to change without notice in order to comply with building site conditions and municipal, structural, and Vendor and/or architectural requirements. Balconies, terraces and patios are exclusive use common elements, shown for display purposes only and location and size of such are subject to change without notice. Window location, size and type may vary without notice. Bulkheads and box outs will be required as chases for plumbing and mechanical. Illustrations are artists concept and may show features not included in base price. Please see Sales Professional for details. Copyright Fusion Homes. Reproduction of the plan is strictly prohibited. E.&O.E. April 2022.

FUSION  
HOMES



AT THE METALWORKS

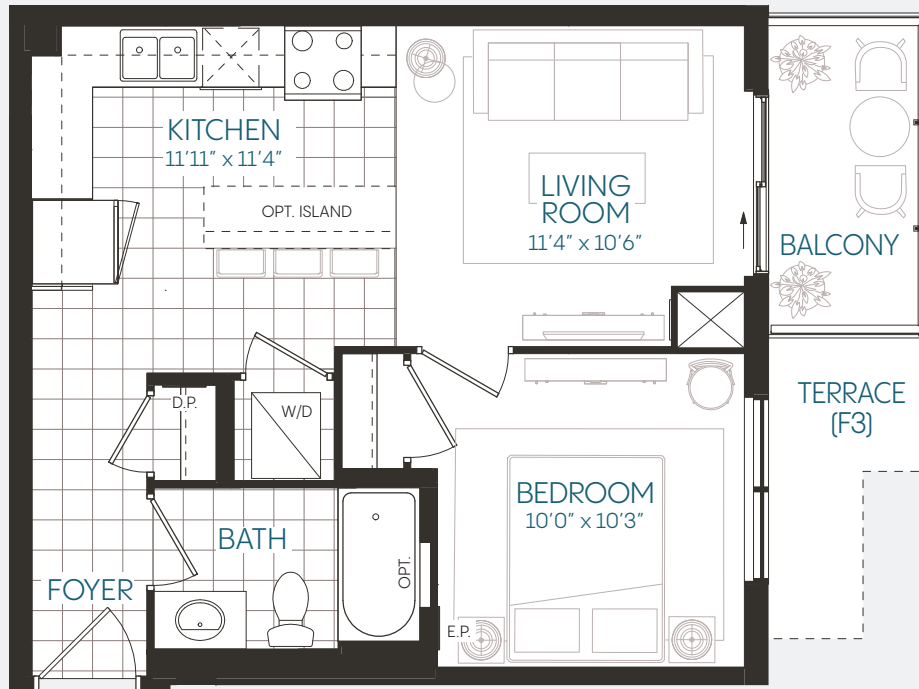
# SUITE 1C

1 Bedroom | 1 Bathroom

Interior 537 sq.ft. (F3-F14)

Exterior 85 sq.ft. (F3) | 45 sq.ft. (F4-F14)

**Total 622 sq.ft. (F3) | 582 sq.ft. (F4-F14)**



Arthur St. S.

FLOOR 3

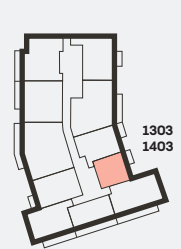
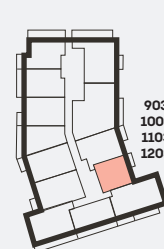
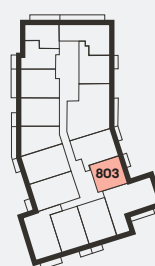
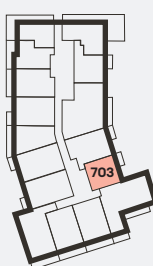
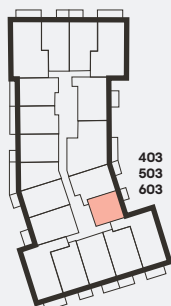
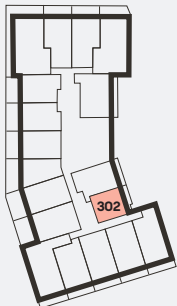
FLOOR 4-6

FLOOR 7

FLOOR 8

FLOOR 9-12

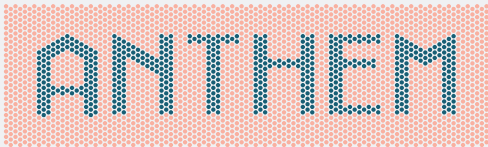
FLOOR 13-14



Speed River

This plan is not to scale and is subject to architectural review and revision, including without limitation, the Unit being constructed with a layout that is the reverse of that set out above. Refer to Draft Condominium Plan in the Disclosure Statement for actual Unit orientation. All details are approximate and subject to change without notice in order to comply with building site conditions and municipal, structural, and Vendor and/or architectural requirements. Balconies, terraces and patios are exclusive use common elements, shown for display purposes only and location and size of such are subject to change without notice. Window location, size and type may vary without notice. Bulkheads and box outs will be required as chases for plumbing and mechanical. Illustrations are artists concept and may show features not included in base price. Please see Sales Professional for details. Copyright Fusion Homes. Reproduction of the plan is strictly prohibited. E.&O.E. April 2022.

**FUSION**  
HOMES

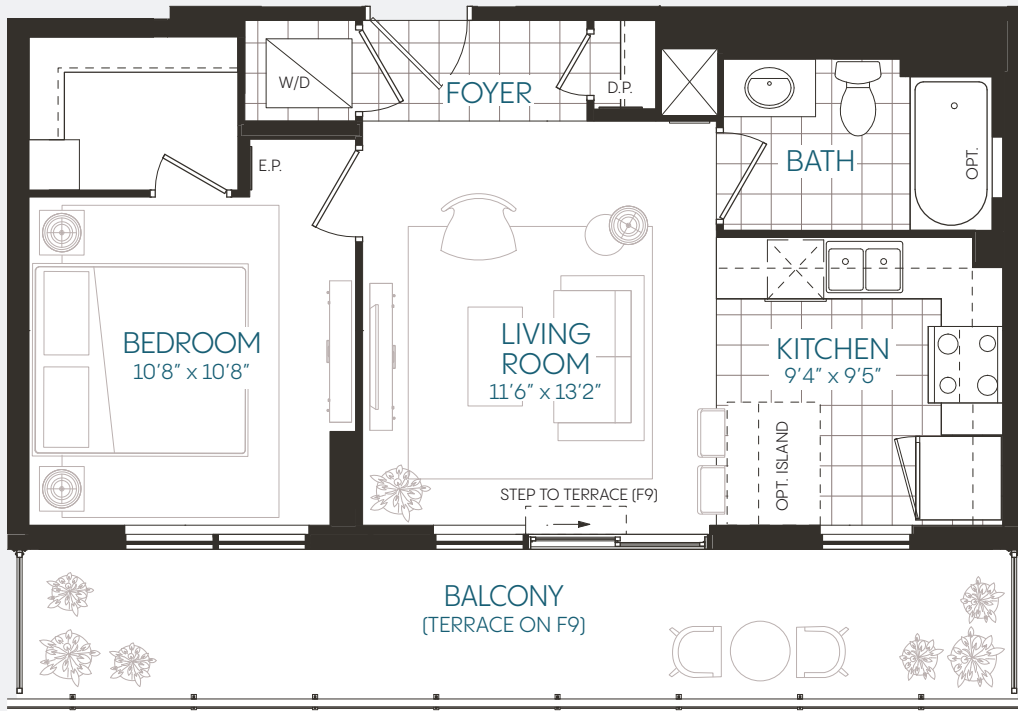


AT THE METALWORKS

# SUITE 1D

1 Bedroom | 1 Bathroom

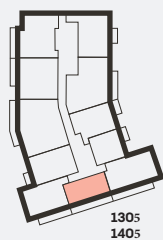
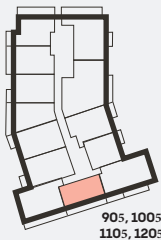
Interior	571 sq.ft.
Exterior	150 sq.ft.
<b>Total</b>	<b>721 sq.ft.</b>



Arthur St. S.

FLOOR 9-12

FLOOR 13-14



Speed River

This plan is not to scale and is subject to architectural review and revision, including without limitation, the Unit being constructed with a layout that is the reverse of that set out above. Refer to Draft Condominium Plan in the Disclosure Statement for actual Unit orientation. All details are approximate and subject to change without notice in order to comply with building site conditions and municipal, structural, and Vendor and/or architectural requirements. Balconies, terraces and patios are exclusive use common elements, shown for display purposes only and location and size of such are subject to change without notice. Window location, size and type may vary without notice. Bulkheads and box outs will be required as chases for plumbing and mechanical. Illustrations are artists concept and may show features not included in base price. Please see Sales Professional for details. Copyright Fusion Homes. Reproduction of the plan is strictly prohibited. E.&O.E. April 2022.

FUSION  
HOMES

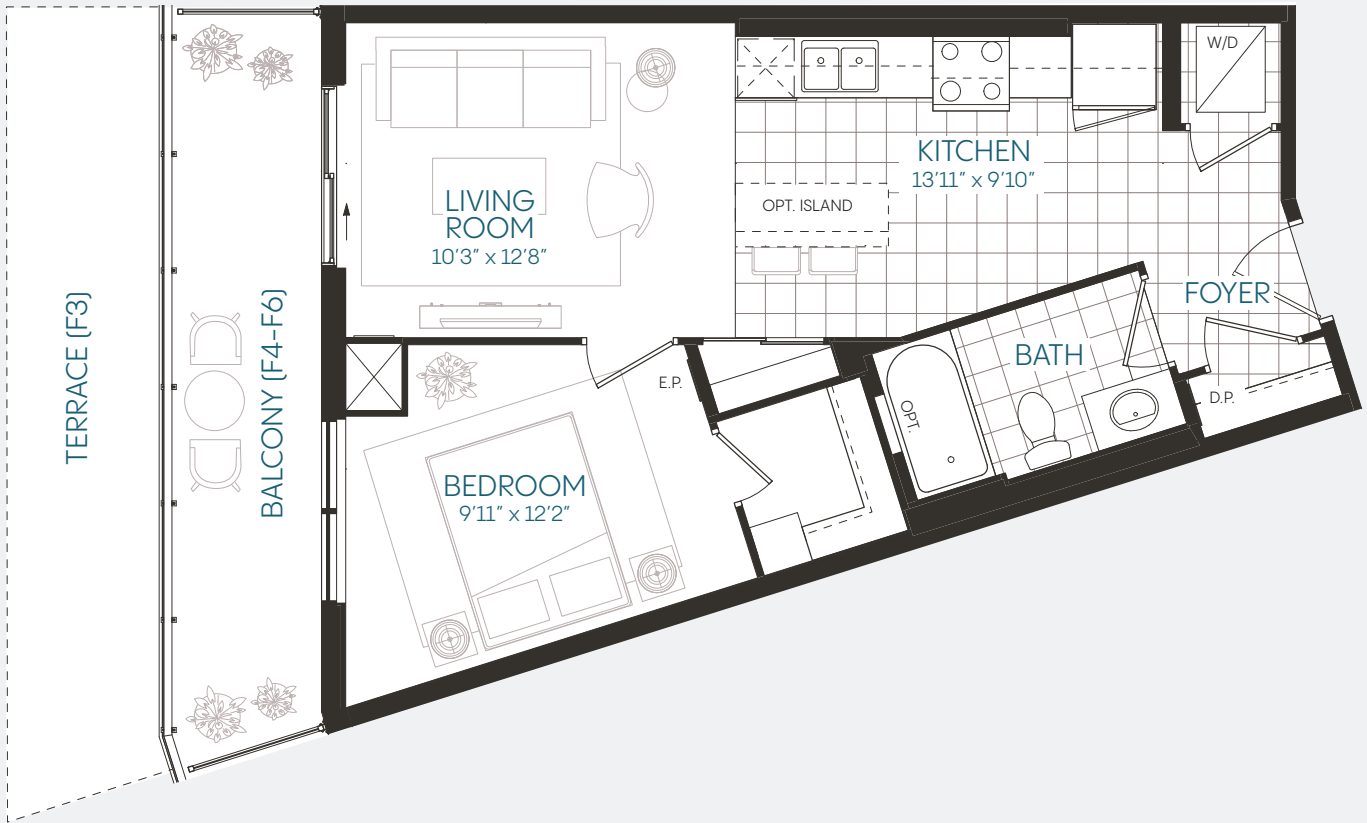
# ANTHEM

AT THE METALWORKS

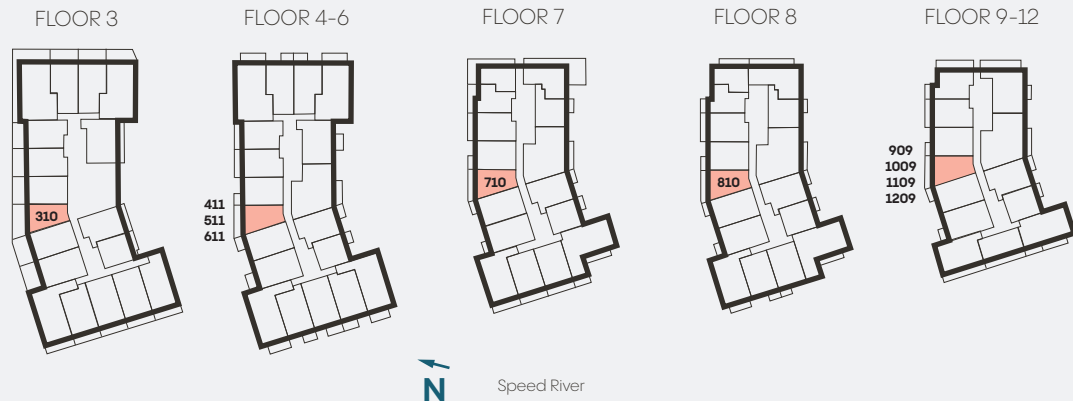
## SUITE 1E

1 Bedroom | 1 Bathroom

Interior	589 sq.ft. (F3-F6)
Exterior	248 sq.ft. (F3)   111 sq.ft. (F4-F6)
<b>Total</b>	<b>837 sq.ft. (F3)   700 sq.ft. (F4-F6)</b>



Arthur St. S.



This plan is not to scale and is subject to architectural review and revision, including without limitation, the Unit being constructed with a layout that is the reverse of that set out above. Refer to Draft Condominium Plan in the Disclosure Statement for actual Unit orientation. All details are approximate and subject to change without notice in order to comply with building site conditions and municipal, structural, and Vendor and/or architectural requirements. Balconies, terraces and patios are exclusive use common elements, shown for display purposes only and location and size of such are subject to change without notice. Window location, size and type may vary without notice. Bulkheads and box outs will be required as chases for plumbing and mechanical. Illustrations are artists concept and may show features not included in base price. Please see Sales Professional for details. Copyright Fusion Homes. Reproduction of the plan is strictly prohibited. E.&O.E. April 2022.

FUSION  
HOMES

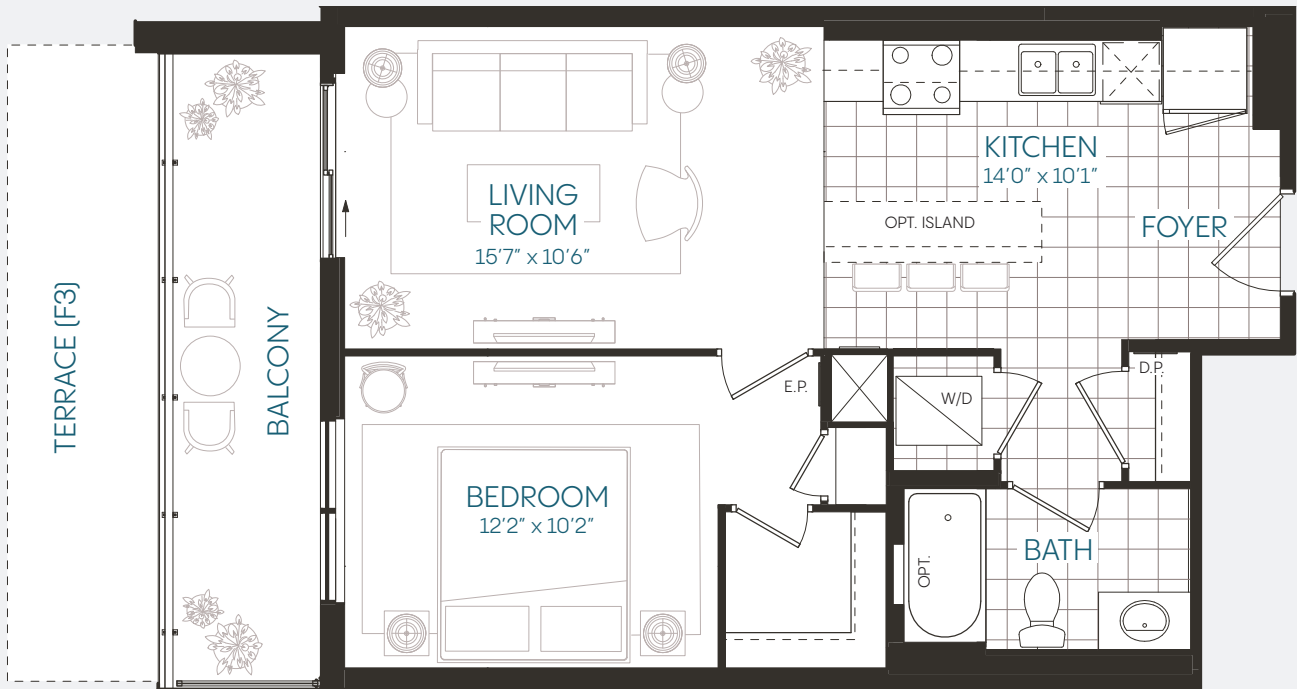
# ANTHEM

AT THE METALWORKS

## SUITE 1J

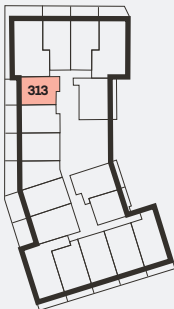
1 Bedroom | 1 Bathroom

Interior 643 sq.ft. (F3-F6)  
 Exterior 208 sq.ft. (F3) | 95 sq.ft. (F4-F6)  
**Total 851 sq.ft. (F3) | 738 sq.ft. (F4-F6)**

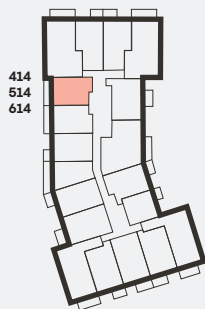


Arthur St. S.

FLOOR 3



FLOOR 4-6



Speed River

This plan is not to scale and is subject to architectural review and revision, including without limitation, the Unit being constructed with a layout that is the reverse of that set out above. Refer to Draft Condominium Plan in the Disclosure Statement for actual Unit orientation. All details are approximate and subject to change without notice in order to comply with building site conditions and municipal, structural, and Vendor and/or architectural requirements. Balconies, terraces and patios are exclusive use common elements, shown for display purposes only and location and size of such are subject to change without notice. Window location, size and type may vary without notice. Bulkheads and box outs will be required as chases for plumbing and mechanical. Illustrations are artists concept and may show features not included in base price. Please see Sales Professional for details. Copyright Fusion Homes. Reproduction of the plan is strictly prohibited. E.&O.E. April 2022.

FUSION  
HOMES

# ANTHEM

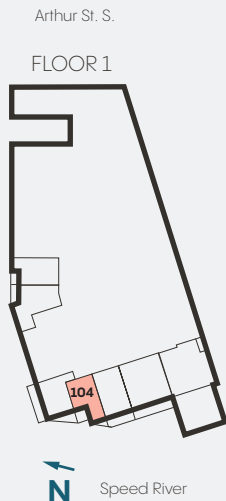
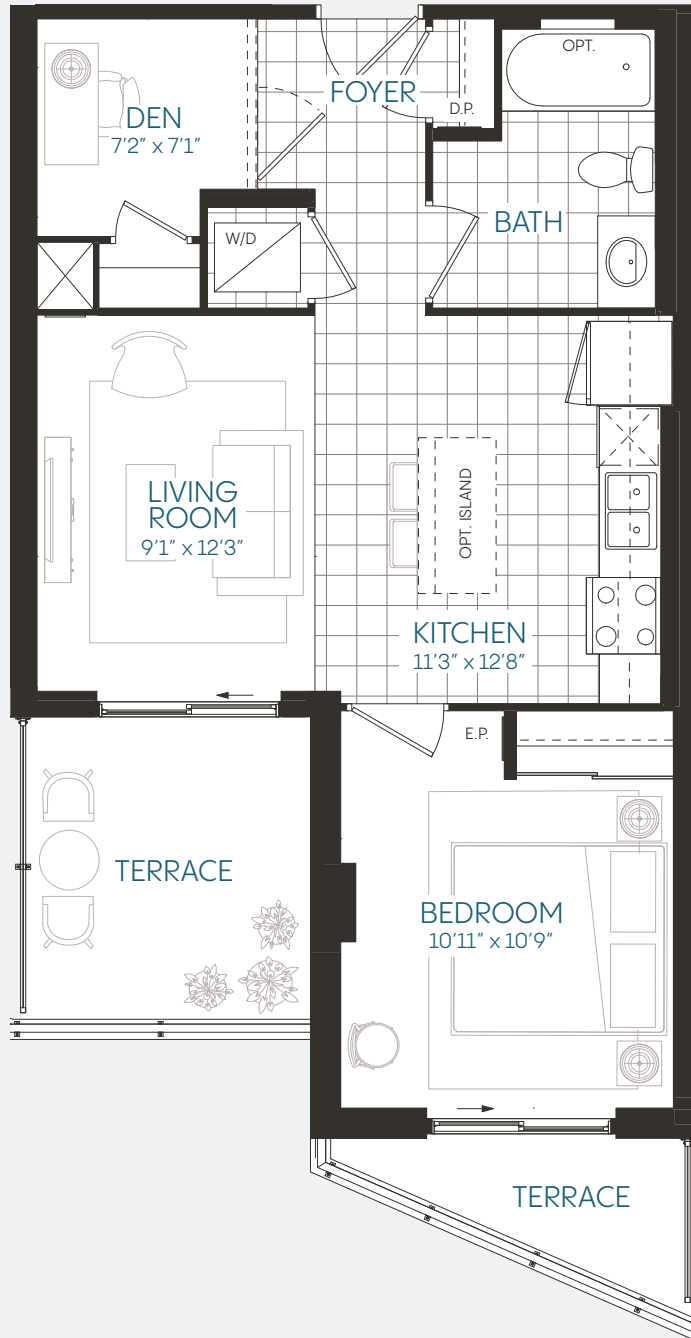
AT THE METALWORKS

# SUITE 1A+D

Barrier-Free Suite

1 Bedroom + Den | 1 Bathroom

Interior	665 sq.ft.
Exterior	125 sq.ft.
<b>Total</b>	<b>790 sq.ft.</b>



This plan is not to scale and is subject to architectural review and revision, including without limitation, the Unit being constructed with a layout that is the reverse of that set out above. Refer to Draft Condominium Plan in the Disclosure Statement for actual Unit orientation. All details are approximate and subject to change without notice in order to comply with building site conditions and municipal, structural, and Vendor and/or architectural requirements. Balconies, terraces and patios are exclusive use common elements, shown for display purposes only and location and size of such are subject to change without notice. Window location, size and type may vary without notice. Bulkheads and box outs will be required as chases for plumbing and mechanical. Illustrations are artists concept and may show features not included in base price. Please see Sales Professional for details. Copyright Fusion Homes. Reproduction of the plan is strictly prohibited. E.&O.E. April 2022.

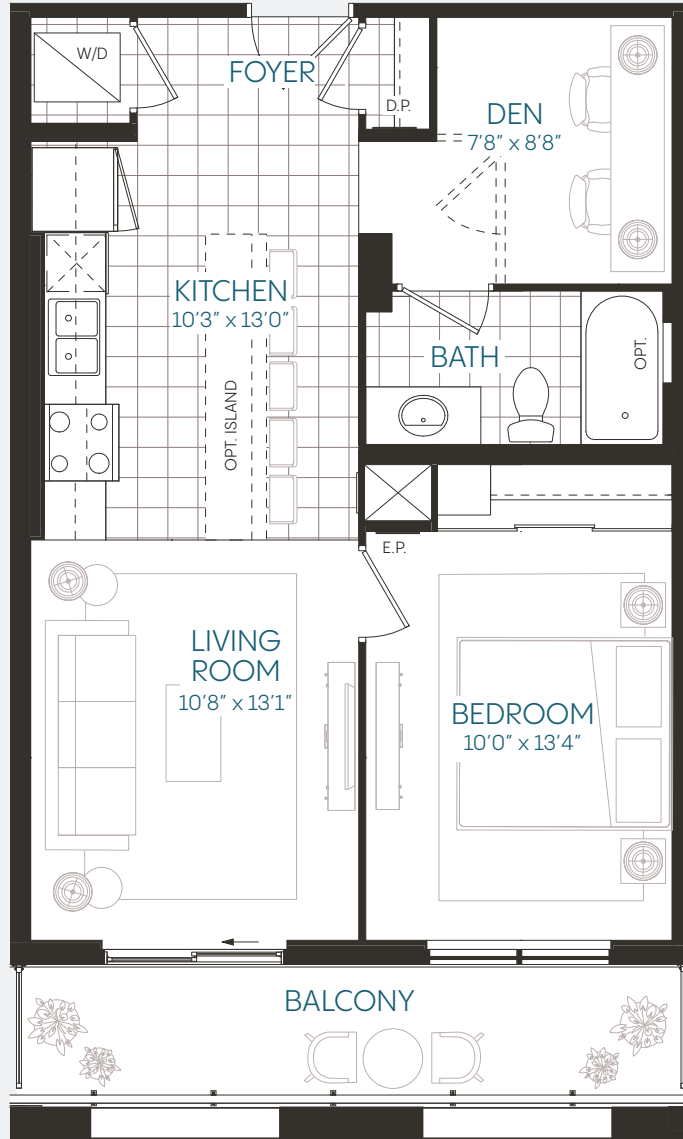
# ANTHEM

AT THE METALWORKS

## SUITE 1B+D

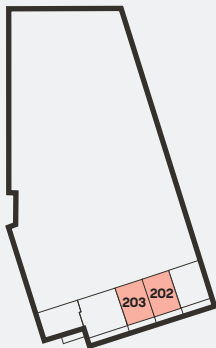
1 Bedroom + Den | 1 Bathroom

Interior	678 sq.ft.
Exterior	87 sq.ft.
<b>Total</b>	<b>765 sq.ft.</b>



Arthur St. S.

FLOOR 2



N Speed River

This plan is not to scale and is subject to architectural review and revision, including without limitation, the Unit being constructed with a layout that is the reverse of that set out above. Refer to Draft Condominium Plan in the Disclosure Statement for actual Unit orientation. All details are approximate and subject to change without notice in order to comply with building site conditions and municipal, structural, and Vendor and/or architectural requirements. Balconies, terraces and patios are exclusive use common elements, shown for display purposes only and location and size of such are subject to change without notice. Window location, size and type may vary without notice. Bulkheads and box outs will be required as chases for plumbing and mechanical. Illustrations are artists concept and may show features not included in base price. Please see Sales Professional for details. Copyright Fusion Homes. Reproduction of the plan is strictly prohibited. E.&O.E. April 2022.

FUSION  
HOMES



AT THE METALWORKS

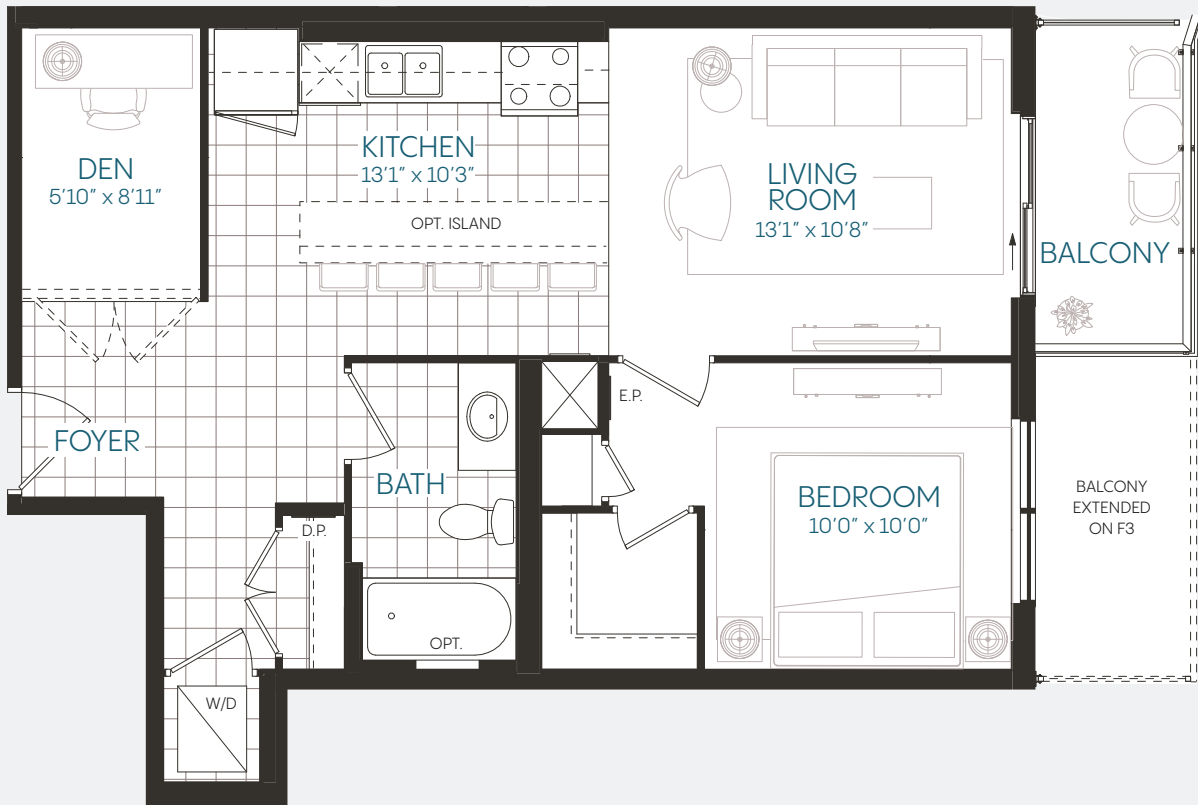
# SUITE 1F+D

1 Bedroom + Den | 1 Bathroom

Interior 722 sq.ft. (F3-F12)

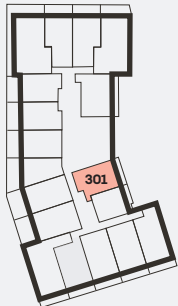
Exterior 106 sq.ft. (F3) | 50 sq.ft. (F4-F12)

**Total 828 sq.ft. (F3) | 772 sq.ft. (F4-F12)**

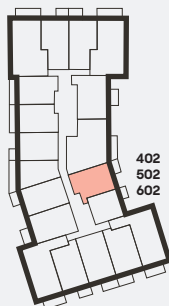


Arthur St. S.

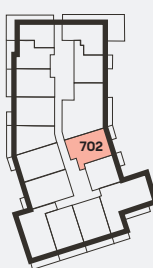
FLOOR 3



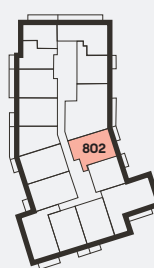
FLOOR 4-6



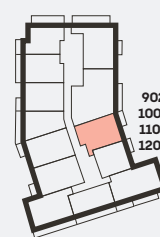
FLOOR 7



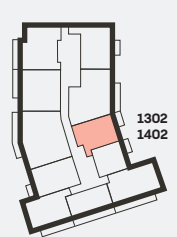
FLOOR 8



FLOOR 9-12



FLOOR 13-14

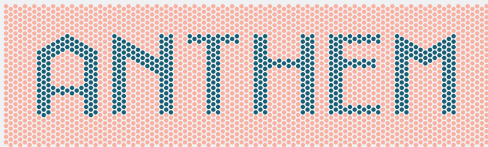


Speed River

This plan is not to scale and is subject to architectural review and revision, including without limitation, the Unit being constructed with a layout that is the reverse of that set out above. Refer to Draft Condominium Plan in the Disclosure Statement for actual Unit orientation. All details are approximate and subject to change without notice in order to comply with building site conditions and municipal, structural, and Vendor and/or architectural requirements. Balconies, terraces and patios are exclusive use common elements, shown for display purposes only and location and size of such are subject to change without notice. Window location, size and type may vary without notice. Bulkheads and box outs will be required as chases for plumbing and mechanical. Illustrations are artists concept and may show features not included in base price. Please see Sales Professional for details. Copyright Fusion Homes. Reproduction of the plan is strictly prohibited. E.&O.E. April 2022.

FUSION  
HOMES





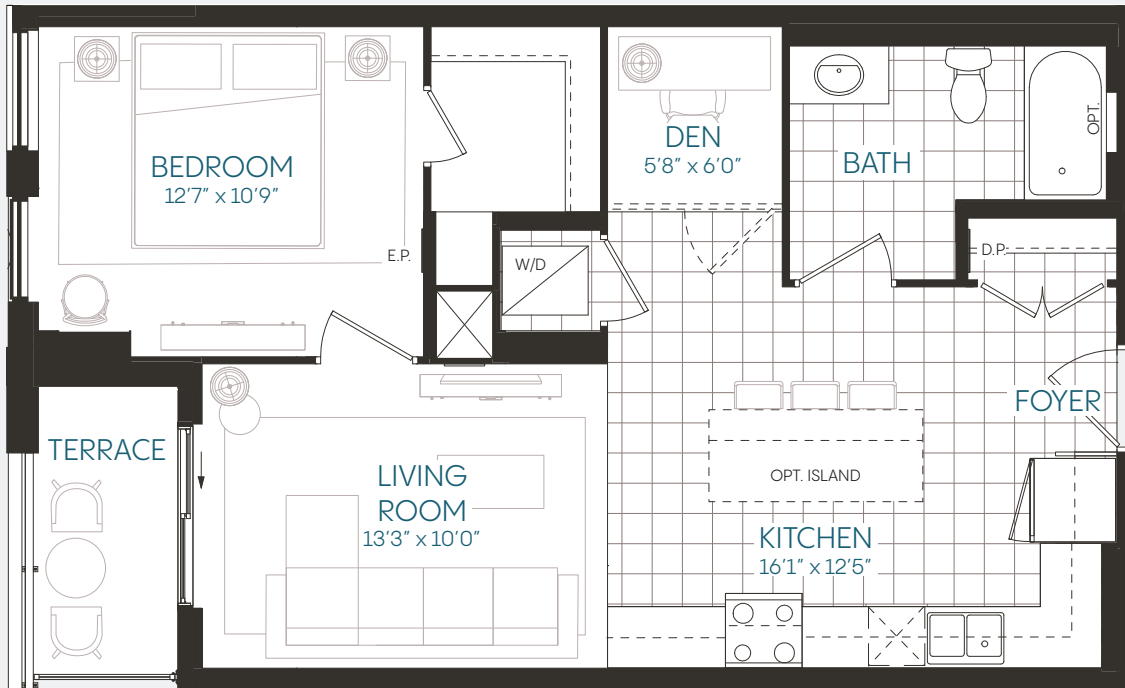
AT THE METALWORKS

# SUITE 1J+D

Barrier-Free Suite

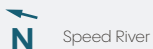
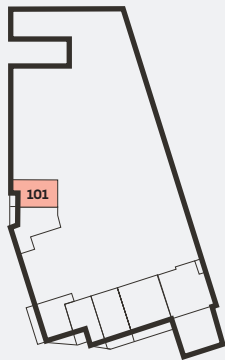
1 Bedroom + Den | 1 Bathroom

Interior	735 sq.ft.
Exterior	40 sq.ft.
<b>Total</b>	<b>775 sq.ft.</b>



Arthur St. S.

FLOOR 1



This plan is not to scale and is subject to architectural review and revision, including without limitation, the Unit being constructed with a layout that is the reverse of that set out above. Refer to Draft Condominium Plan in the Disclosure Statement for actual Unit orientation. All details are approximate and subject to change without notice in order to comply with building site conditions and municipal, structural, and Vendor and/or architectural requirements. Balconies, terraces and patios are exclusive use common elements, shown for display purposes only and location and size of such are subject to change without notice. Window location, size and type may vary without notice. Bulkheads and box outs will be required as chases for plumbing and mechanical. Illustrations are artists concept and may show features not included in base price. Please see Sales Professional for details. Copyright Fusion Homes. Reproduction of the plan is strictly prohibited. E.&O.E. April 2022.

# ANTHEM

AT THE METALWORKS

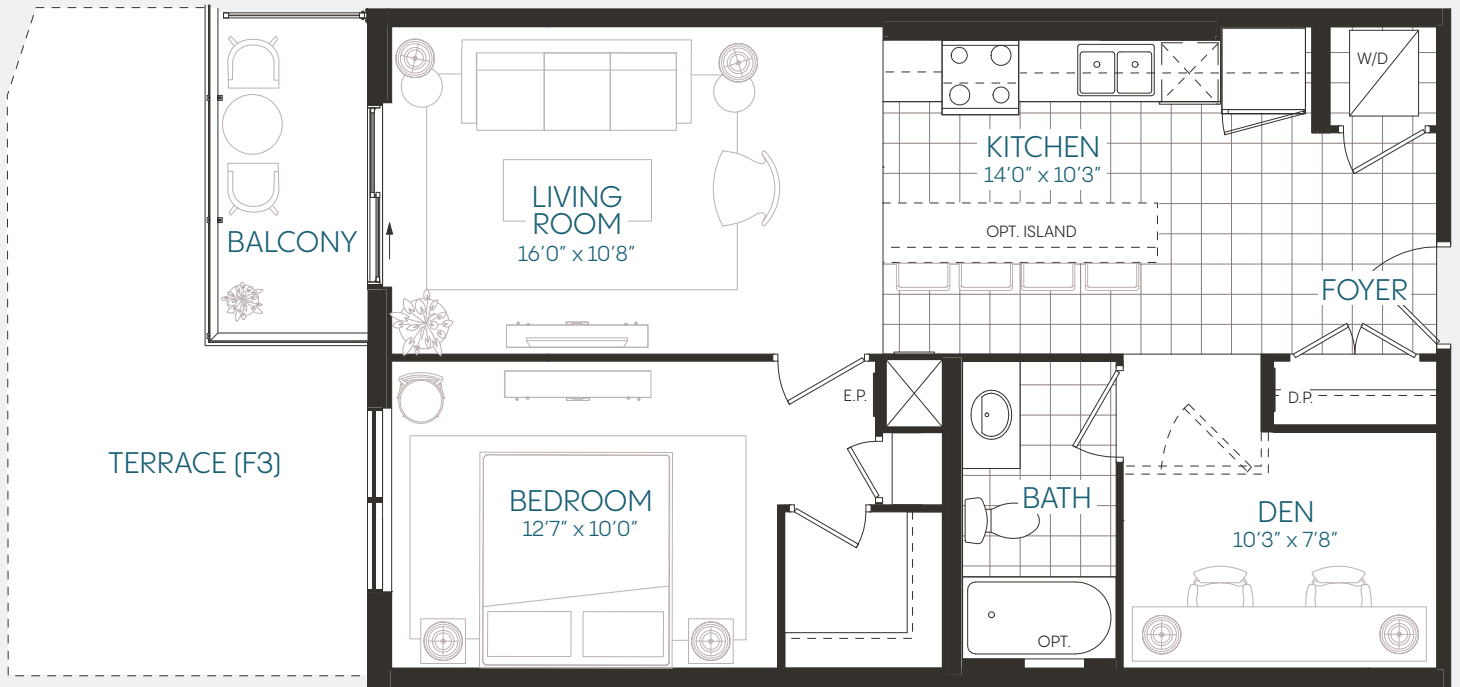
## SUITE 1K+D

1 Bedroom + Den | 1 Bathroom

Interior 764 sq.ft. (F3-F14)

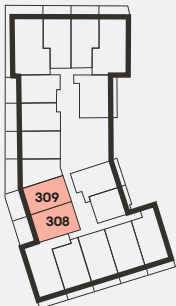
Exterior 246 sq.ft. (F3) | 51 sq.ft. (F4-F14)

**Total 1,010 sq.ft. (F3) | 815 sq.ft. (F4-F14)**

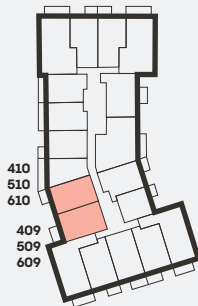


Arthur St. S.

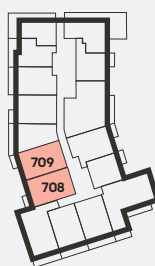
FLOOR 3



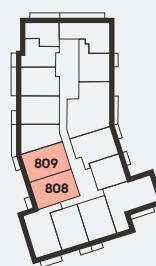
FLOOR 4-6



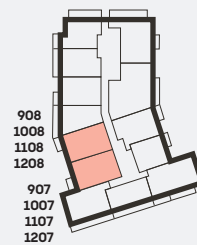
FLOOR 7



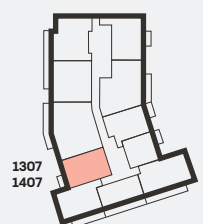
FLOOR 8



FLOOR 9-12



FLOOR 13-14



Speed River

This plan is not to scale and is subject to architectural review and revision, including without limitation, the Unit being constructed with a layout that is the reverse of that set out above. Refer to Draft Condominium Plan in the Disclosure Statement for actual Unit orientation. All details are approximate and subject to change without notice in order to comply with building site conditions and municipal, structural, and Vendor and/or architectural requirements. Balconies, terraces and patios are exclusive use common elements, shown for display purposes only and location and size of such are subject to change without notice. Window location, size and type may vary without notice. Bulkheads and box outs will be required as chases for plumbing and mechanical. Illustrations are artists concept and may show features not included in base price. Please see Sales Professional for details. Copyright Fusion Homes. Reproduction of the plan is strictly prohibited. E.&O.E. April 2022.

FUSION  
HOMES

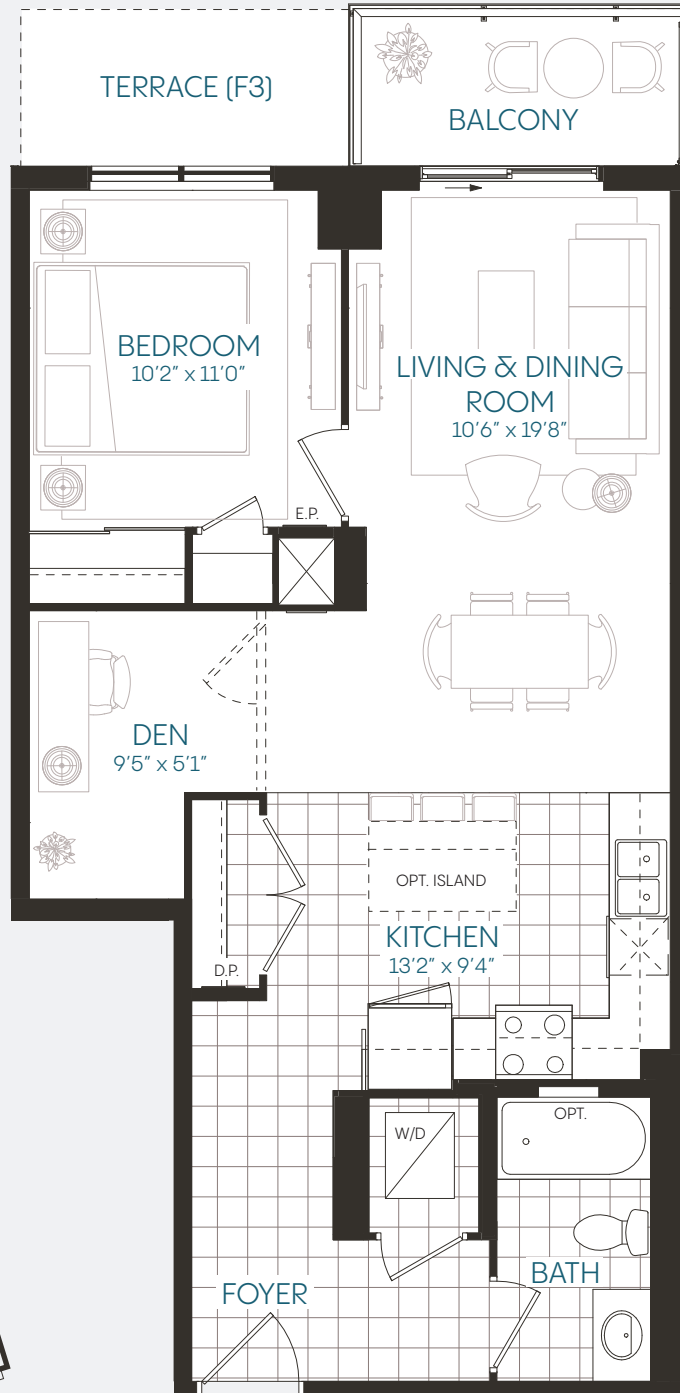
# ANTHEM

AT THE METALWORKS

## SUITE 1L+D

1 Bedroom + Den | 1 Bathroom

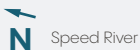
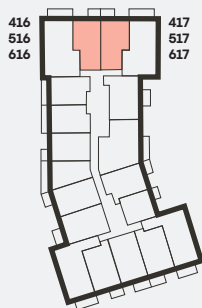
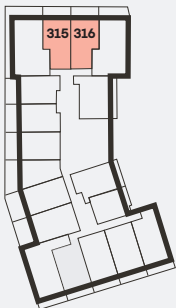
Interior	778 sq.ft. (F3-F6)
Exterior	100 sq.ft. (F3)   51 sq.ft. (F4-F6)
<b>Total</b>	<b>878 sq.ft. (F3)   829 sq.ft. (F4-F6)</b>



Arthur St. S.

FLOOR 3

FLOOR 4-6



This plan is not to scale and is subject to architectural review and revision, including without limitation, the Unit being constructed with a layout that is the reverse of that set out above. Refer to Draft Condominium Plan in the Disclosure Statement for actual Unit orientation. All details are approximate and subject to change without notice in order to comply with building site conditions and municipal, structural, and Vendor and/or architectural requirements. Balconies, terraces and patios are exclusive use common elements, shown for display purposes only and location and size of such are subject to change without notice. Window location, size and type may vary without notice. Bulkheads and box outs will be required as chases for plumbing and mechanical. Illustrations are artists concept and may show features not included in base price. Please see Sales Professional for details. Copyright Fusion Homes. Reproduction of the plan is strictly prohibited. E.&O.E. April 2022.

FUSION  
HOMES

# ANTHEM

AT THE METALWORKS

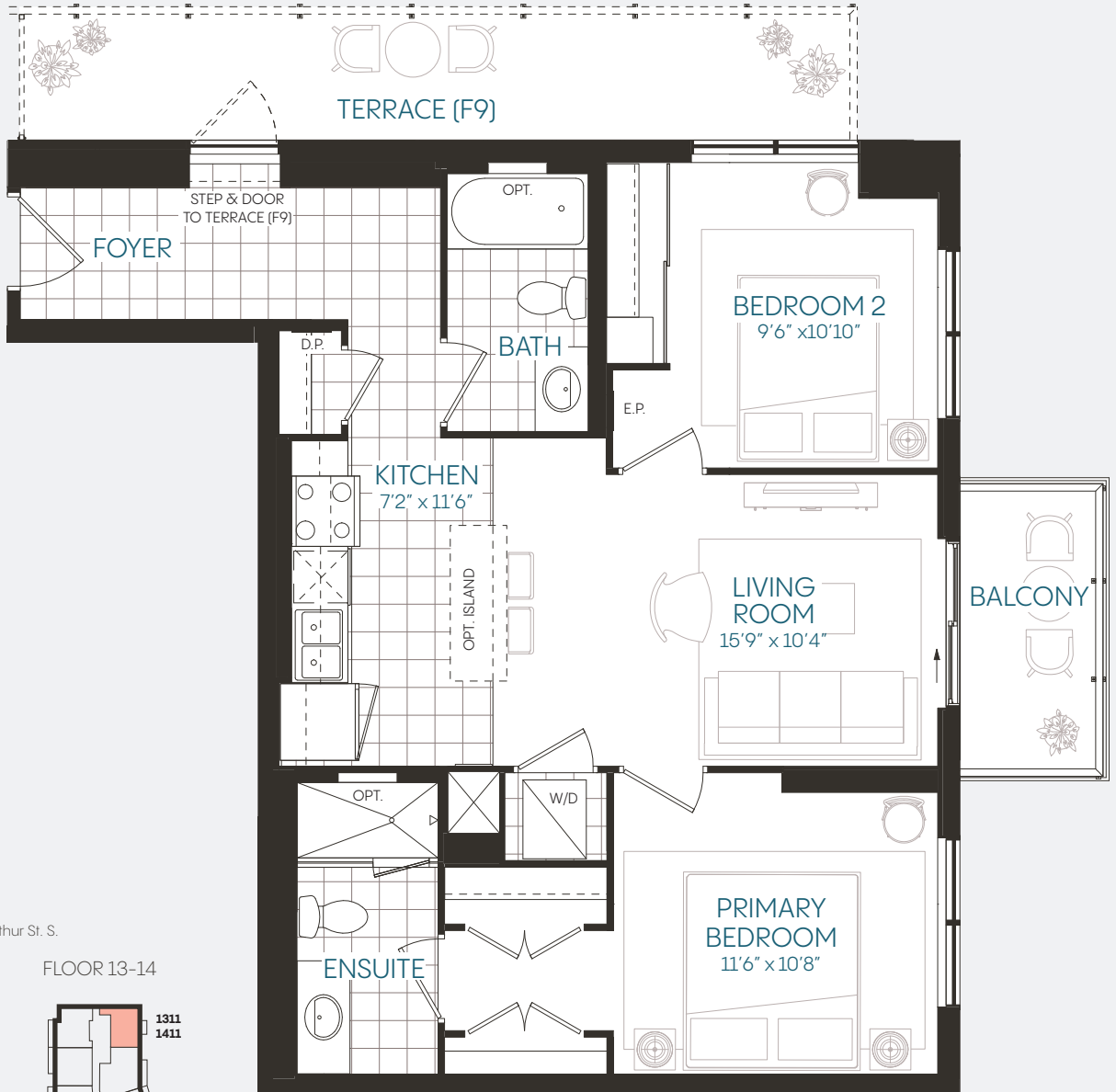
## SUITE 2K

2 Bedroom | 2 Bathroom

Interior 901 sq.ft. (F9-F14)

Exterior 184 sq.ft. (F9) | 50 sq.ft. (F10-F14)

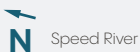
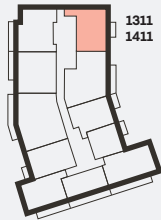
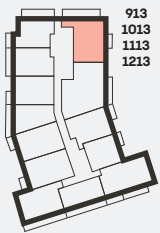
**Total 1,085 sq.ft. (F9) | 951 sq.ft. (F10-F14)**



Arthur St. S.

FLOOR 9-12

FLOOR 13-14



This plan is not to scale and is subject to architectural review and revision, including without limitation, the Unit being constructed with a layout that is the reverse of that set out above. Refer to Draft Condominium Plan in the Disclosure Statement for actual Unit orientation. All details are approximate and subject to change without notice in order to comply with building site conditions and municipal, structural, and Vendor and/or architectural requirements. Balconies, terraces and patios are exclusive use common elements, shown for display purposes only and location and size of such are subject to change without notice. Window location, size and type may vary without notice. Bulkheads and box outs will be required as chases for plumbing and mechanical. Illustrations are artists concept and may show features not included in base price. Please see Sales Professional for details. Copyright Fusion Homes. Reproduction of the plan is strictly prohibited. E.&O.E. April 2022.

FUSION  
HOMES

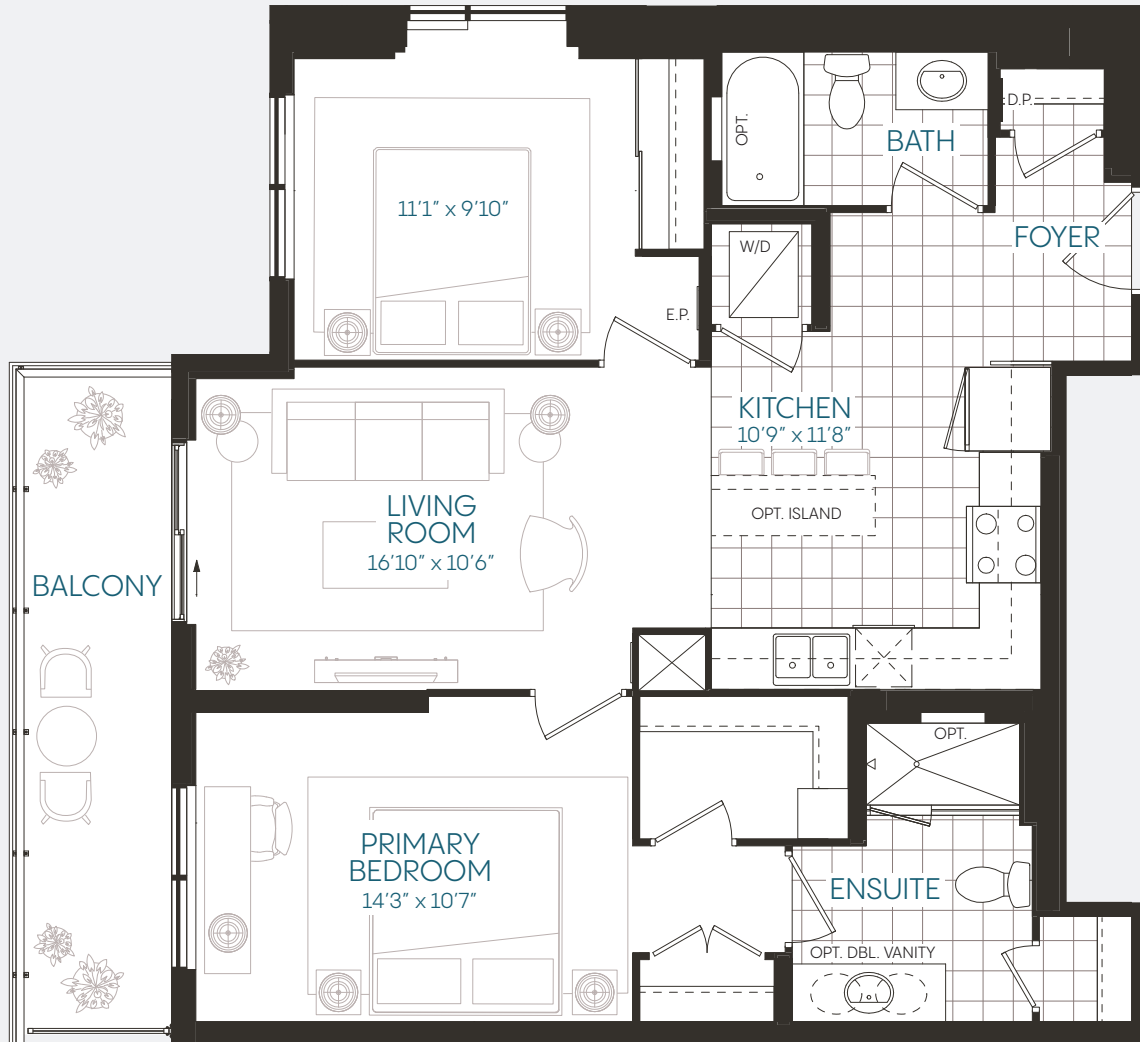
# ANTHEM

AT THE METALWORKS

## SUITE 20

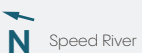
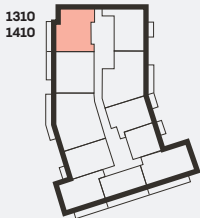
2 Bedroom | 2 Bathroom

Interior	969 sq.ft.
Exterior	105 sq.ft.
<b>Total</b>	<b>1,074 sq.ft.</b>



Arthur St. S.

FLOOR 13-14



This plan is not to scale and is subject to architectural review and revision, including without limitation, the Unit being constructed with a layout that is the reverse of that set out above. Refer to Draft Condominium Plan in the Disclosure Statement for actual Unit orientation. All details are approximate and subject to change without notice in order to comply with building site conditions and municipal, structural, and Vendor and/or architectural requirements. Balconies, terraces and patios are exclusive use common elements, shown for display purposes only and location and size of such are subject to change without notice. Window location, size and type may vary without notice. Bulkheads and box outs will be required as chases for plumbing and mechanical. Illustrations are artists concept and may show features not included in base price. Please see Sales Professional for details. Copyright Fusion Homes. Reproduction of the plan is strictly prohibited. E.&O.E. April 2022.

FUSION  
HOMES