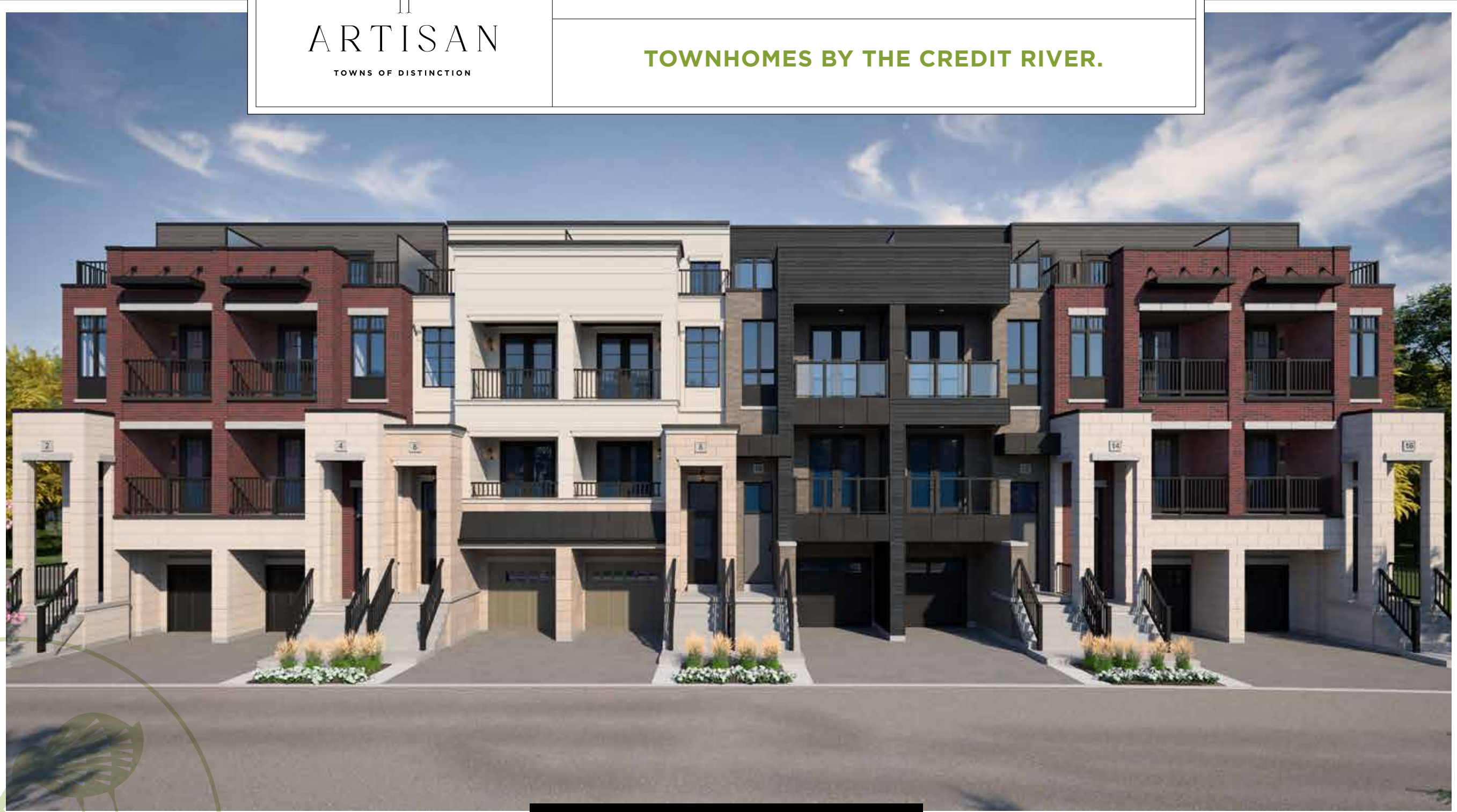




the architecture of well-being.

TOWNHOMES BY THE CREDIT RIVER.



WOODLAND COLLECTION





nature and mindful architecture.

Timeless homes with an enveloping vibrant quality, Artisan is wellness by design. The 'architecture of well-being' is at the centre of every home, from the initial concepts to every distinctive architectural style. Expertly curated with a richness in detail, evoking a sense of prosperity through its natural surroundings, you are invited to cultivate a home that is implicitly for you. A style all your own with an artisan-driven approach to design.



WAREHOUSE

Defined by its fresh industrial aesthetic, this contemporary style is rich in character. Its rustic brick exterior with premier smooth stone are complemented by dark windows and metal trim. This strong geometric form is brimming with a sleek and innovative feel, emulating a modern sense of style through its leading-edge interventions and a curated palette.



MODERN

Modern design is multi-faceted and innovative by nature. For Artisan, this interpretation utilizes clean and strong asymmetrical lines with a combination of brick, metal and glass in its exterior. Stylish and intriguingly structured, its expansive windows invite the splendours of the Credit River and outdoors inwards, inspiring a sense of admiration of the natural beauty surrounding the community.



FRENCH PROVINCIAL

In essence, French Provincial is an elegant balance of rural sophistication and European sensibility, an intricate link to the past in today's present. From its mixture of premier smooth stone and stucco, beautiful ornate details to its black exterior trim and dark entry doors, this design is seamlessly connected to the contemporary styles of the community while evoking its own distinctive brilliance. A warm, natural and welcoming aesthetic that is beautifully expressed.



the distiller

WOODLAND COLLECTION

3 BED / 2.5 BATH

WAREHOUSE

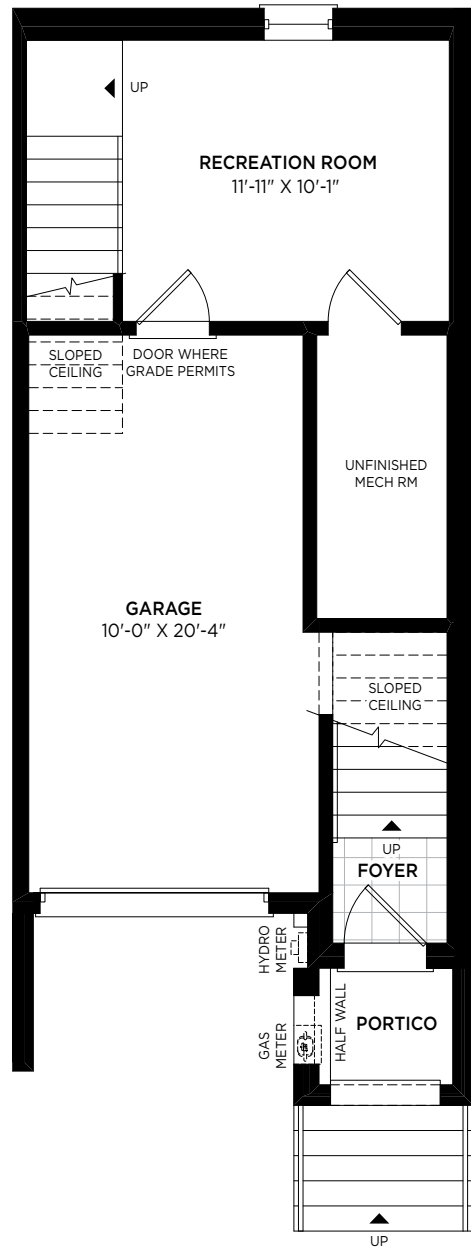
1,637 SQ. FT.

MODERN

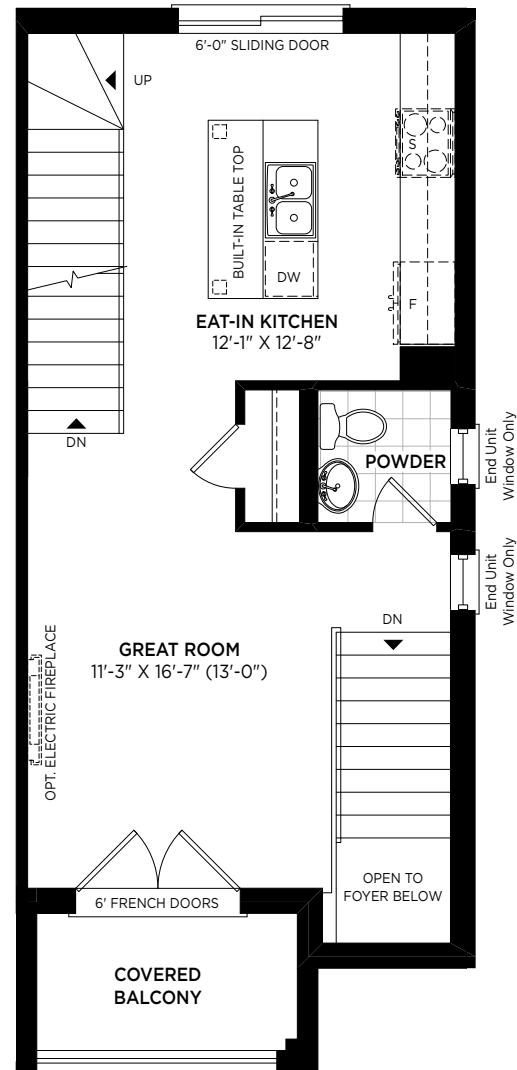
1,637 SQ. FT.



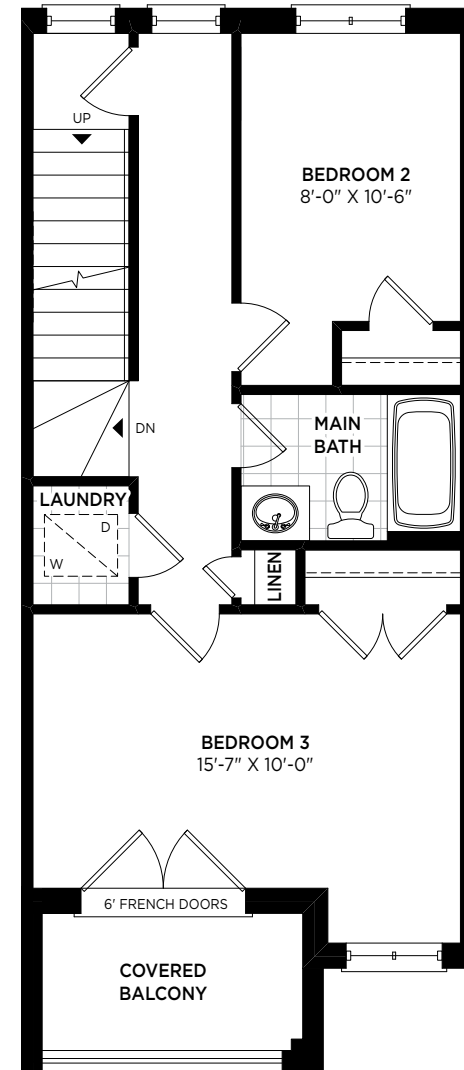
STANDARD PLAN



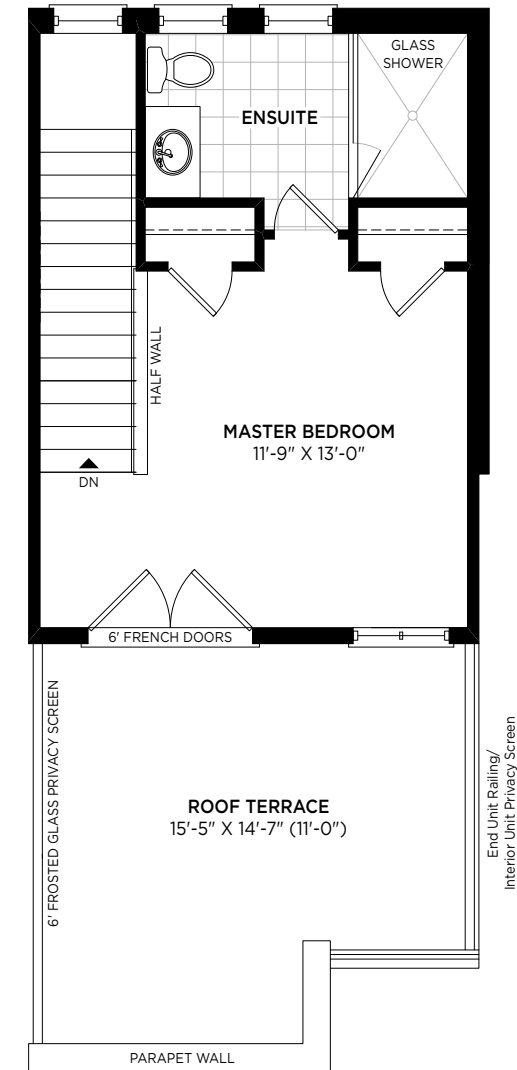
GROUND FLOOR



MAIN FLOOR



SECOND FLOOR



THIRD FLOOR

All plans, materials, dimensions and specifications are subject to change without notice. Actual usable floor space may vary from stated floor area. Interior and/or exterior steps may vary at any entranceway due to grading. Rendering is artist's concept. Floor plan is rendering concept. Portico and covered balcony conditions may vary based by elevation. Square footage includes open to below areas, as applicable. March 2023. (16-0)





the painter

WOODLAND COLLECTION

3 BED / 2.5 BATH

WAREHOUSE

1,820 SQ. FT.

FRENCH PROVINCIAL

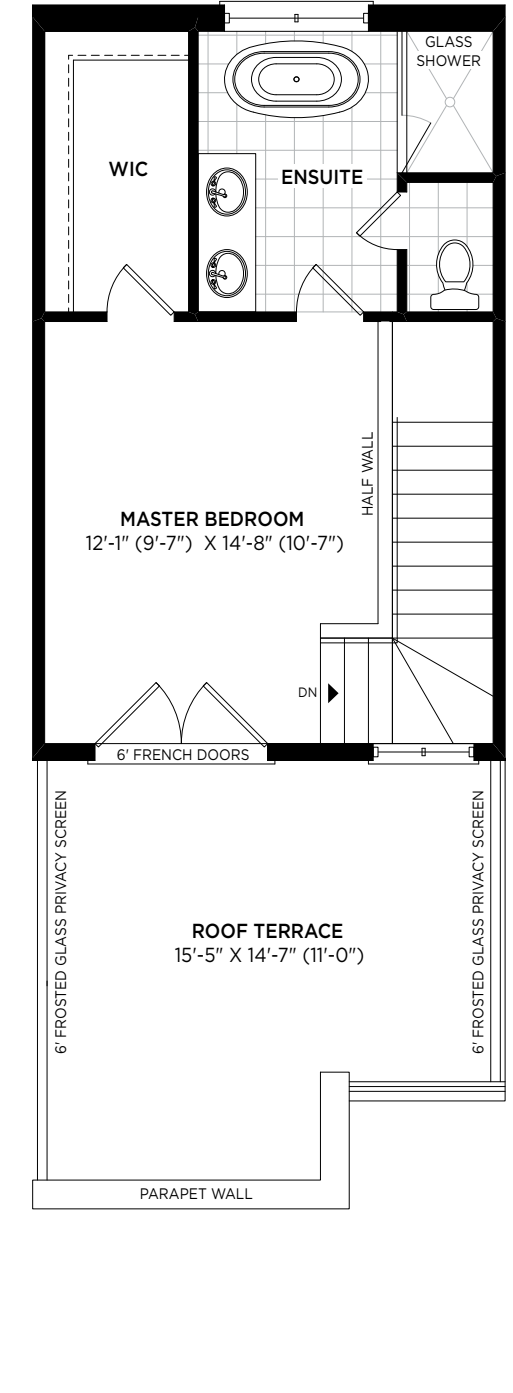
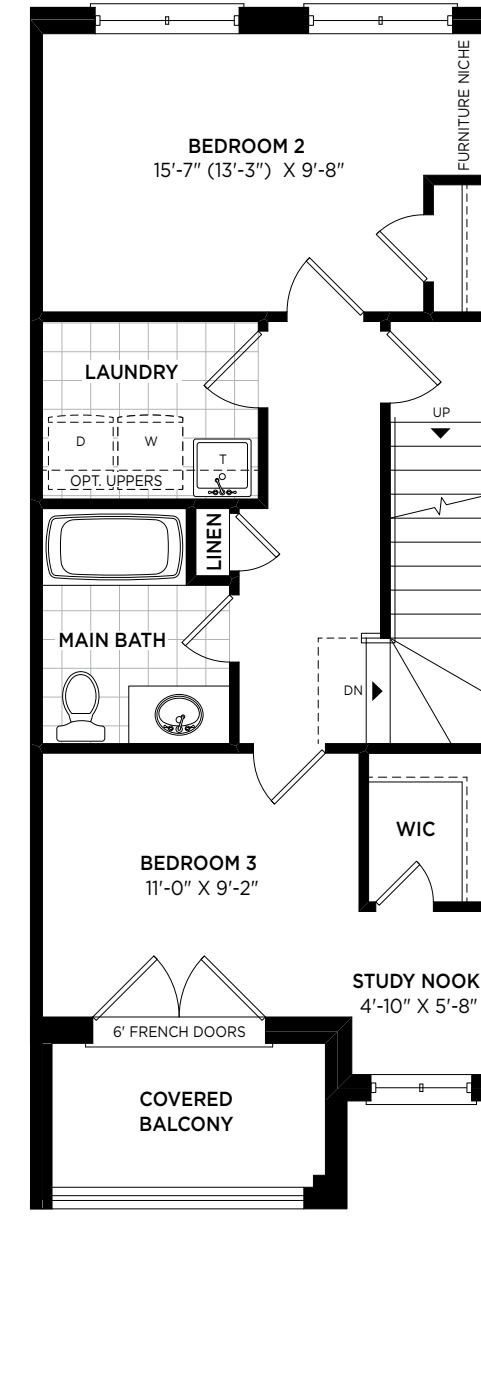
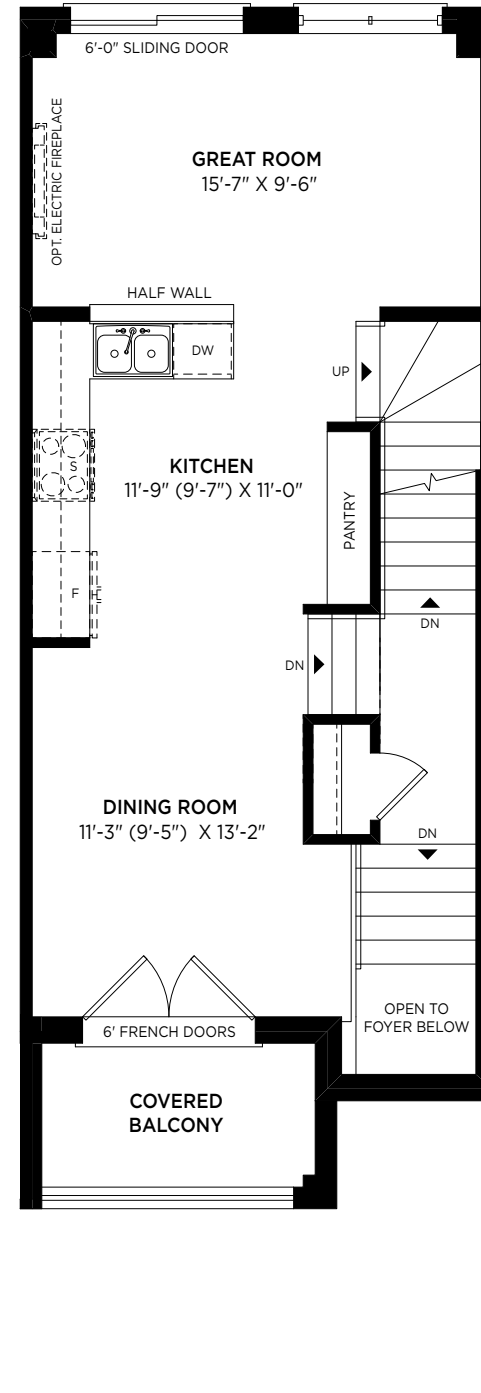
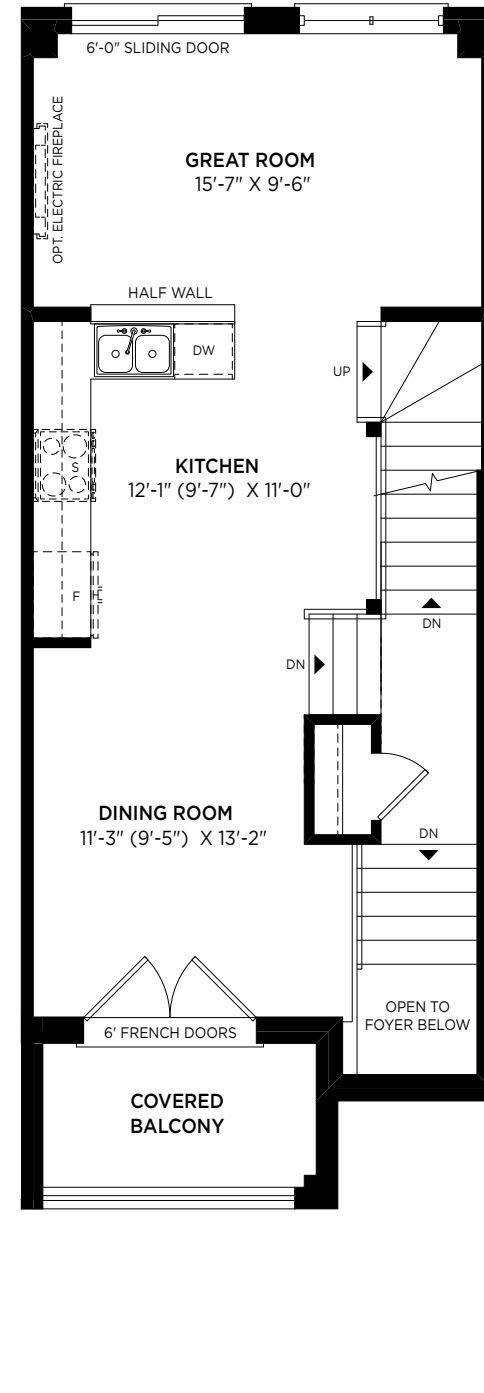
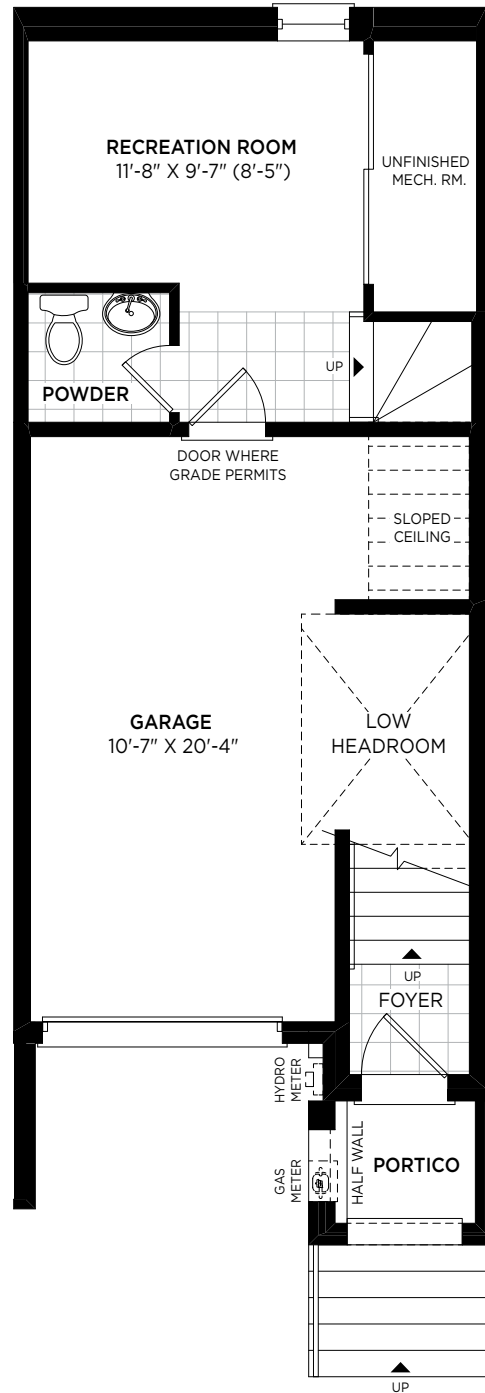
1,818 SQ. FT.

MODERN

1,820 SQ. FT.



STANDARD PLAN



All plans, materials, dimensions and specifications are subject to change without notice. Actual usable floor space may vary from stated floor area. Interior and/or exterior steps may vary at any entranceway due to grading. Rendering is artist's concept. Floor plan is rendering concept. Portico and covered balcony conditions may vary based by elevation. Square footage includes open to below areas, as applicable. May 2022. (16-01)





the sculptor

WOODLAND COLLECTION

3 BED / 2.5 BATH

WAREHOUSE

1,919 SQ. FT.

FRENCH PROVINCIAL

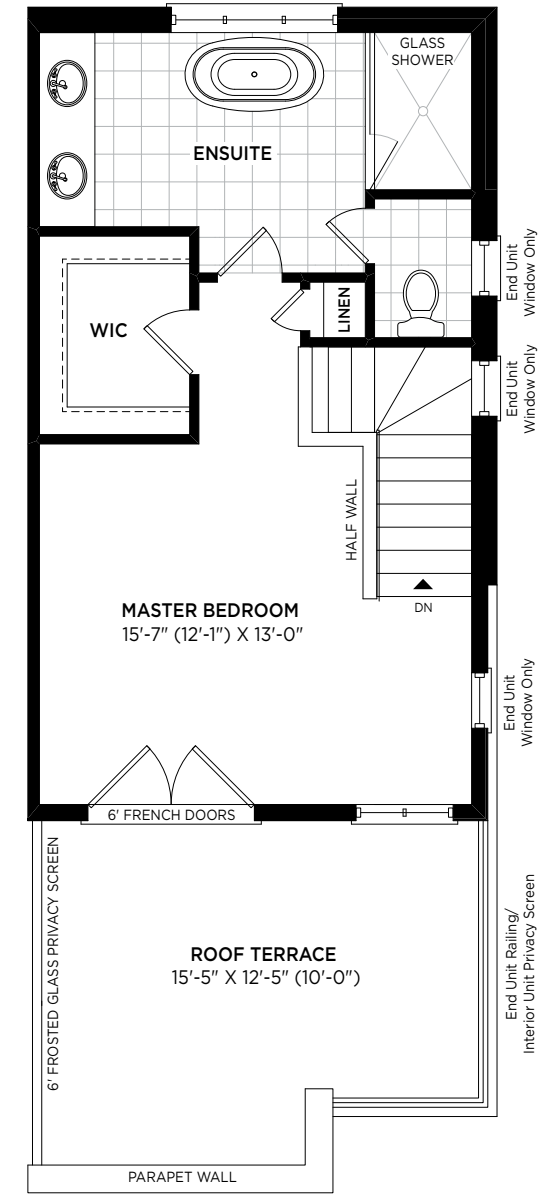
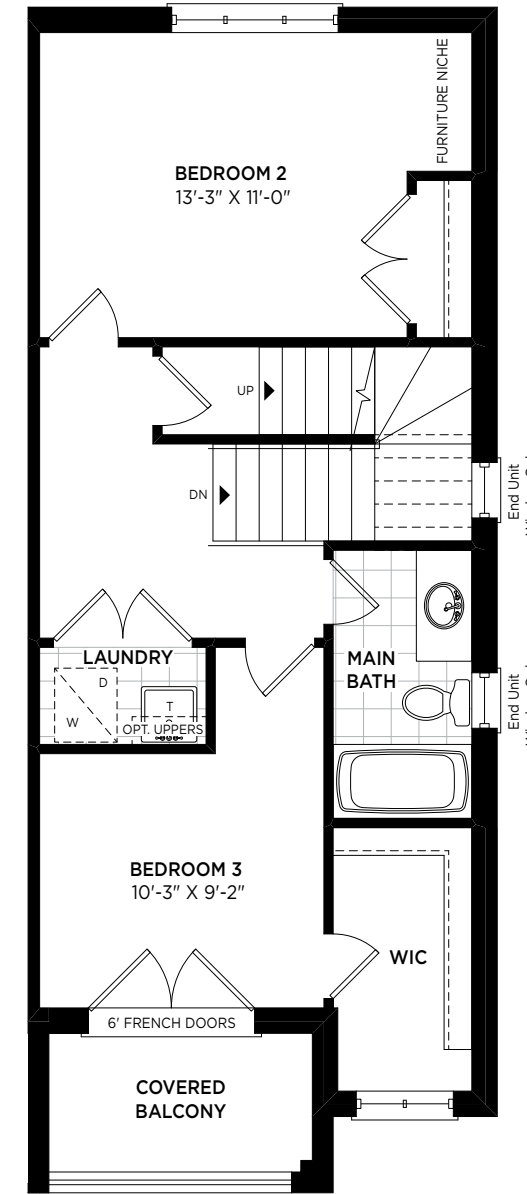
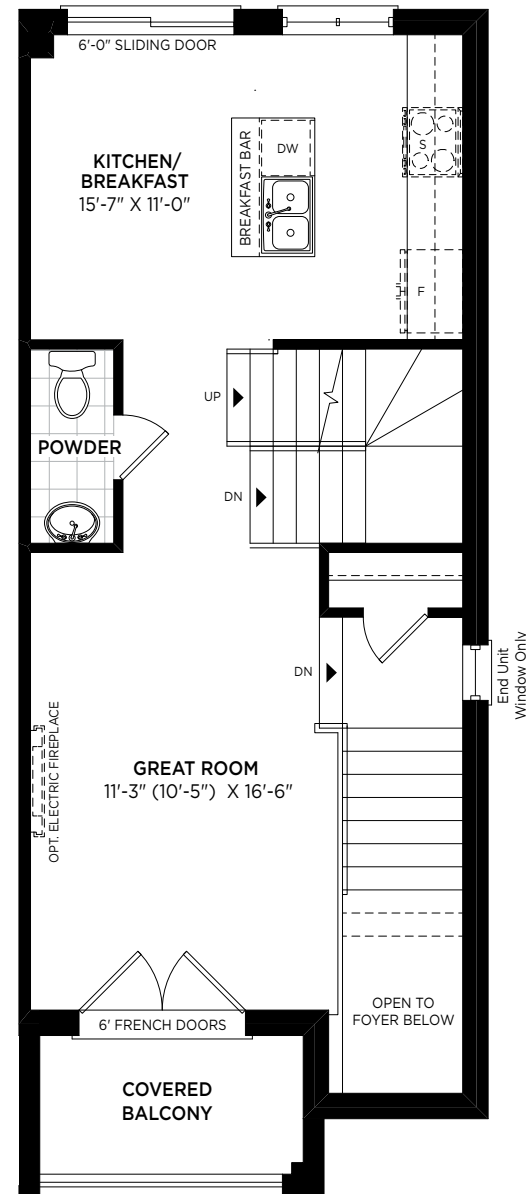
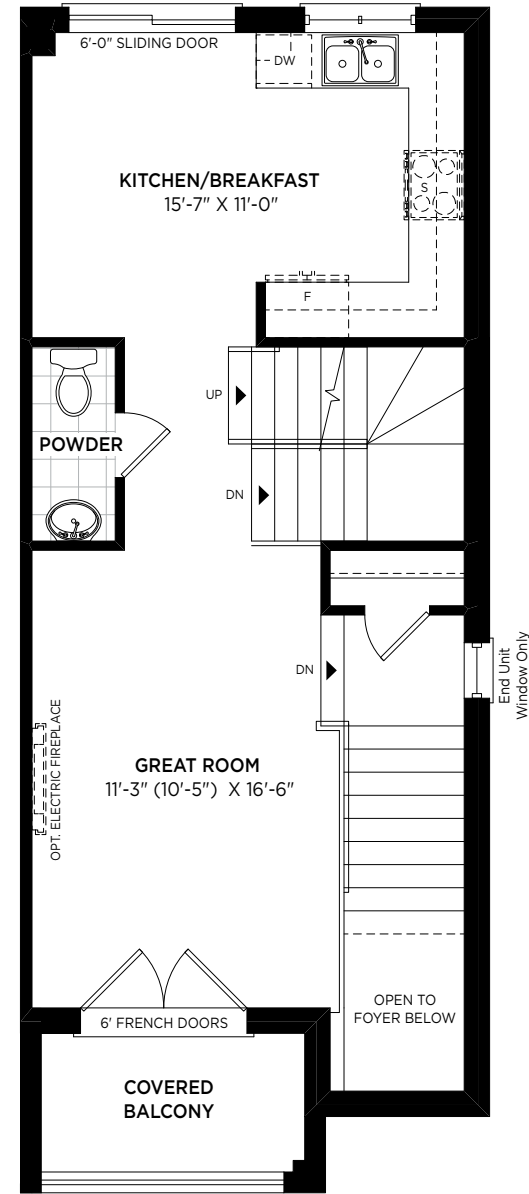
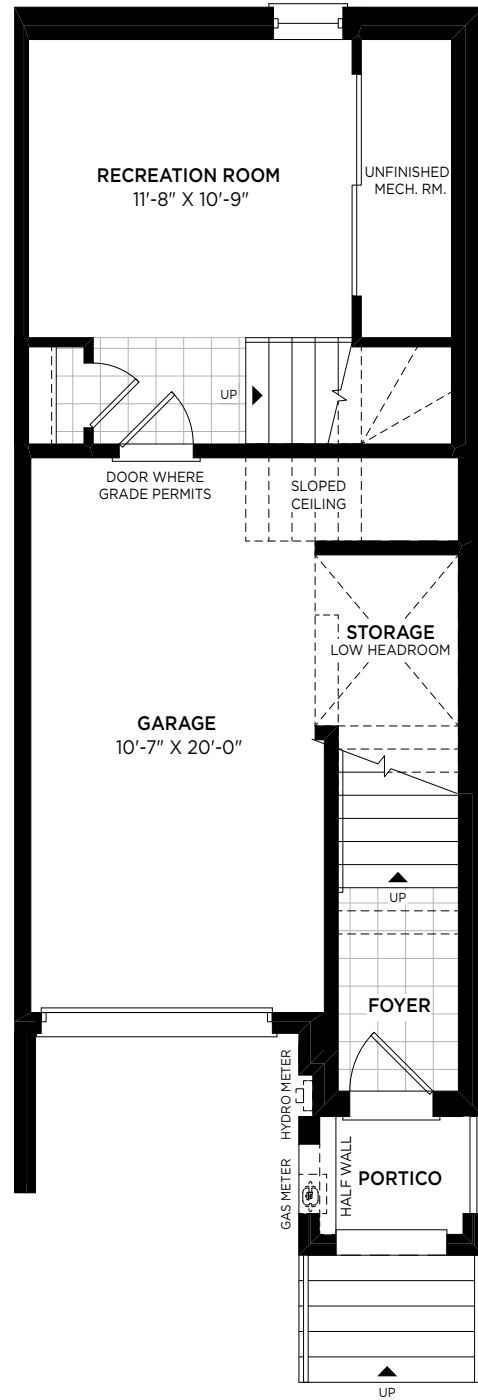
1,915 SQ. FT.

MODERN

1,919 SQ. FT.



STANDARD PLAN



All plans, materials, dimensions and specifications are subject to change without notice. Actual usable floor space may vary from stated floor area. Interior and/or exterior steps may vary at any entranceway due to grading. Rendering is artist's concept. Floor plan is rendering concept. Portico and covered balcony conditions may vary based by elevation. Square footage includes open to below areas, as applicable. May 2022. (16-02)





the jeweler

WOODLAND COLLECTION

3 BED / 2.5 BATH

WAREHOUSE

2,006 SQ. FT.

FRENCH PROVINCIAL

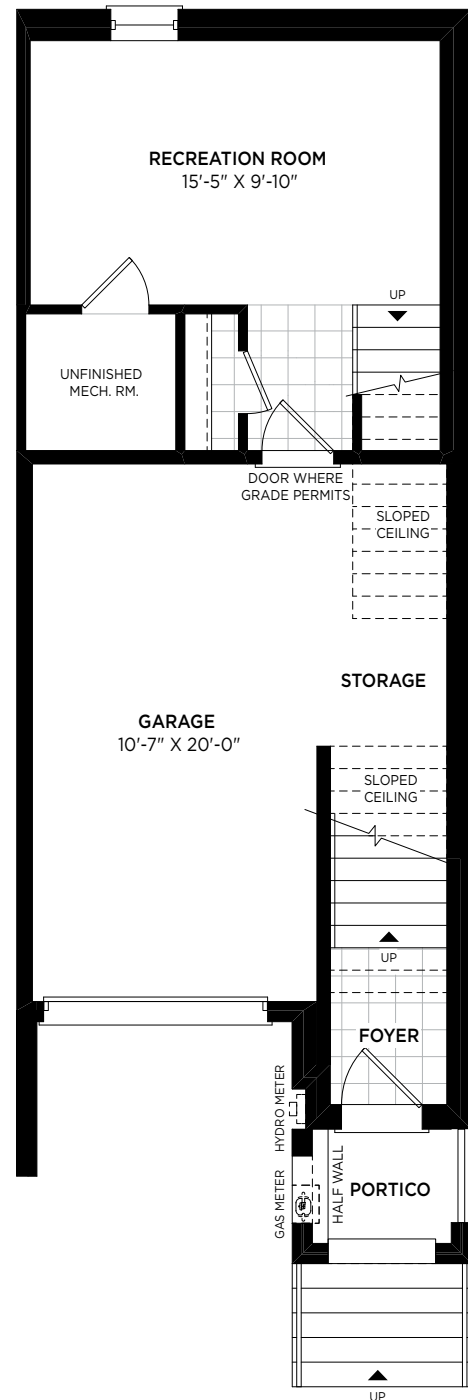
2,003 SQ. FT.

MODERN

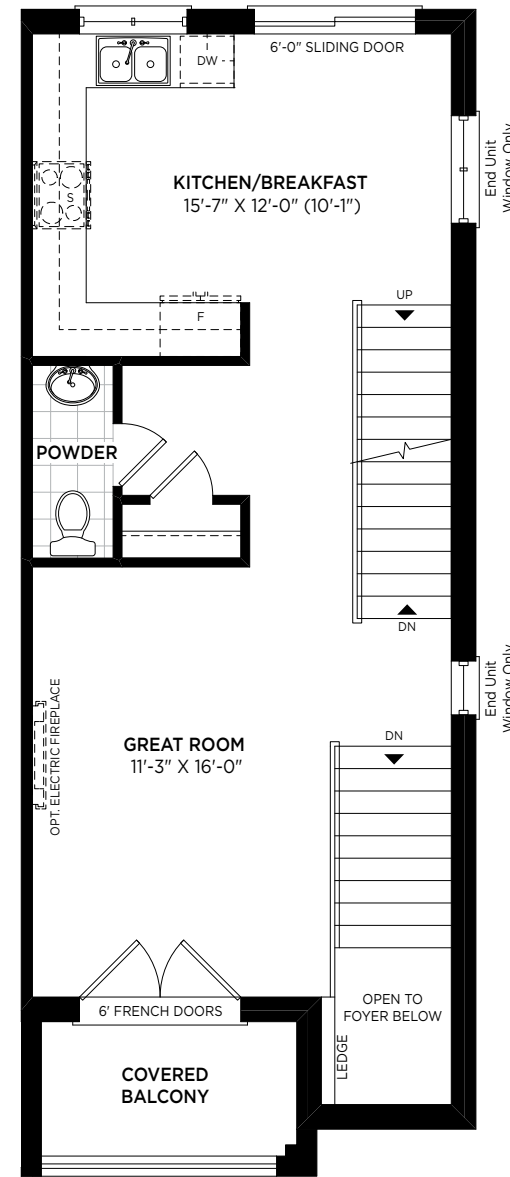
2,006 SQ. FT.



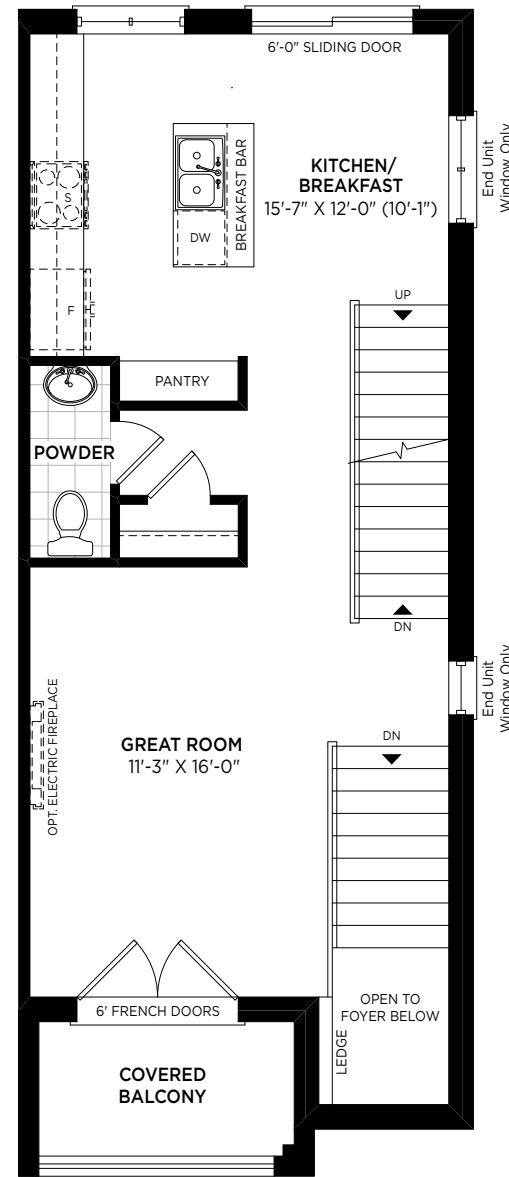
STANDARD PLAN



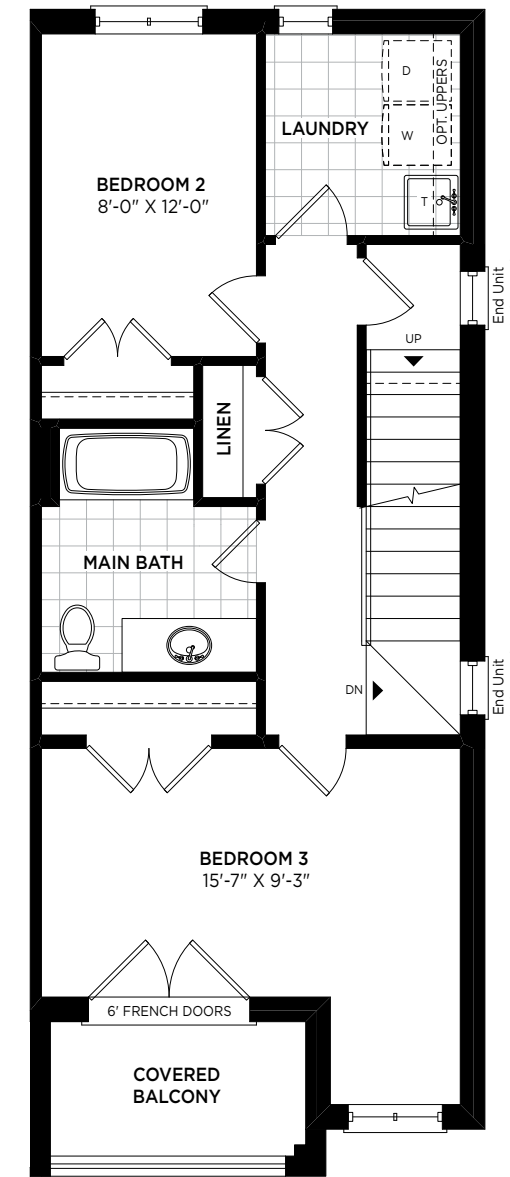
GROUND FLOOR



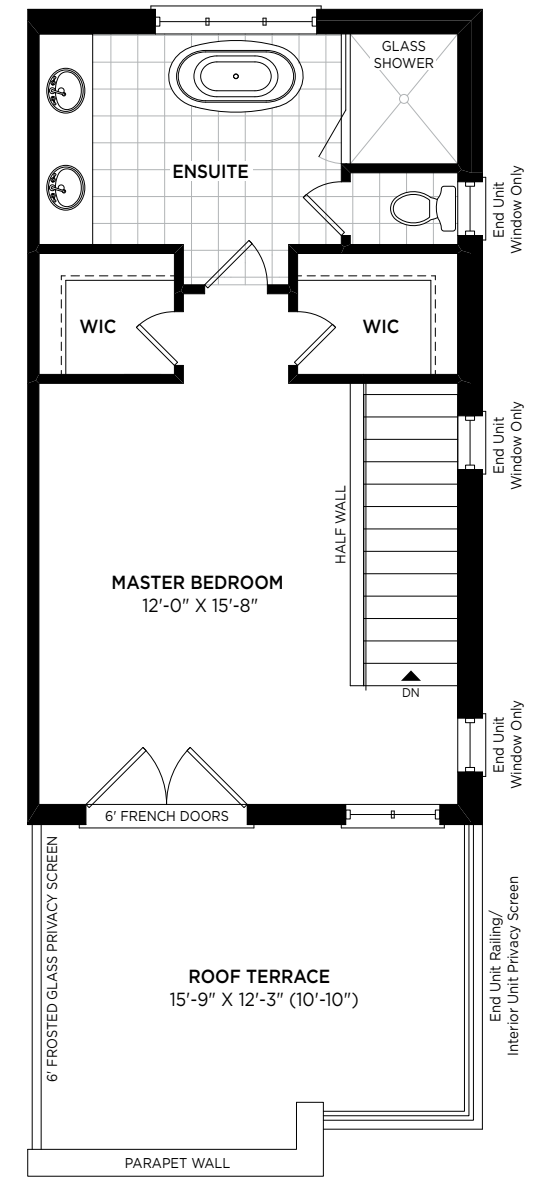
MAIN FLOOR



OPT. MAIN FLOOR



SECOND FLOOR



THIRD FLOOR





the jeweler

WOODLAND COLLECTION

3 BED / 2.5 BATH

WAREHOUSE

2,165 SQ. FT.

FRENCH PROVINCIAL

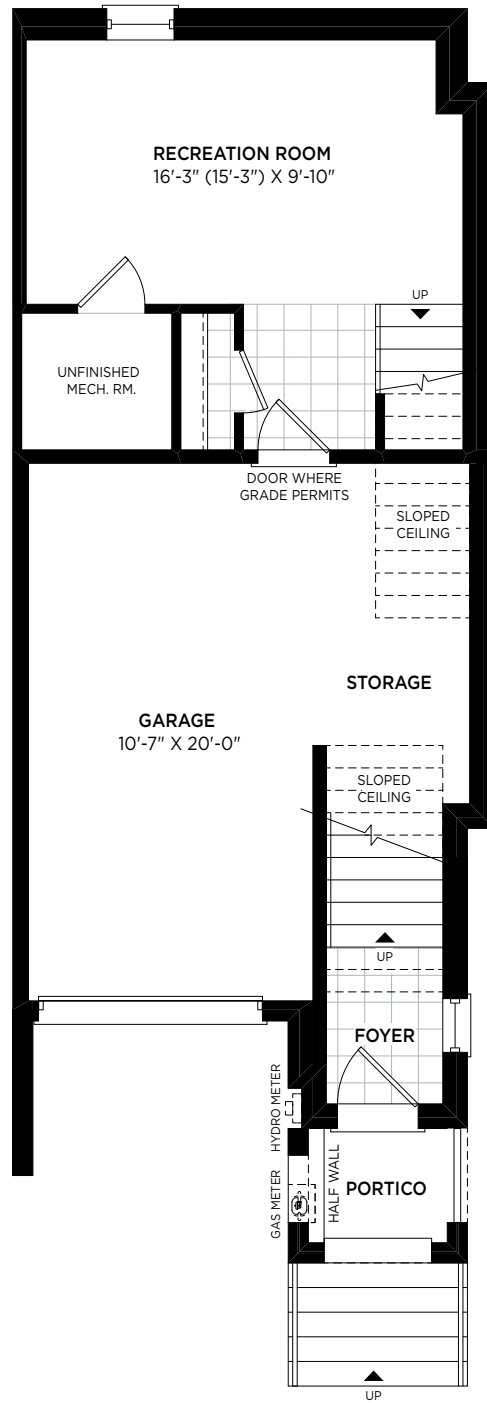
2,162 SQ. FT.

MODERN

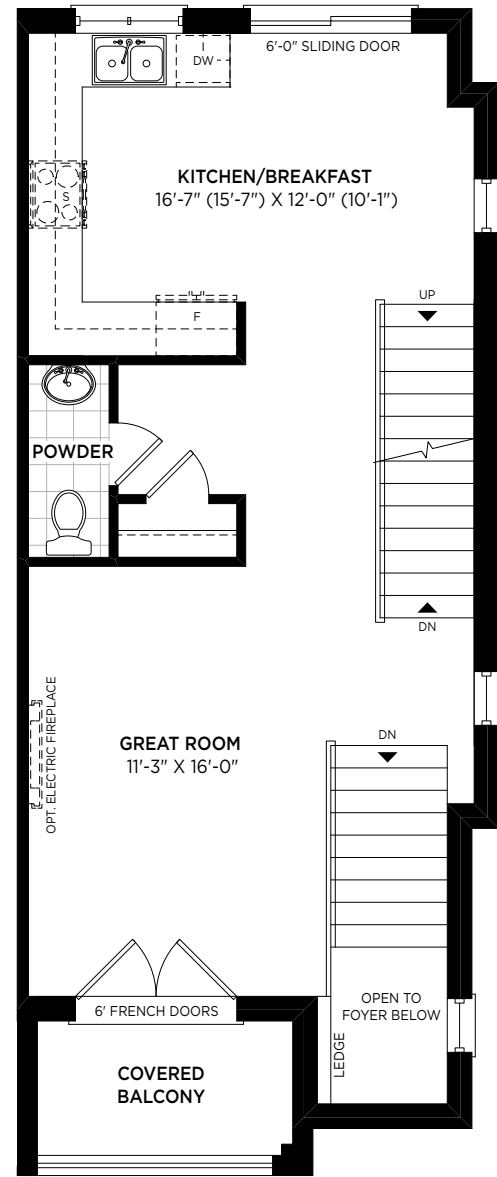
2,165 SQ. FT.



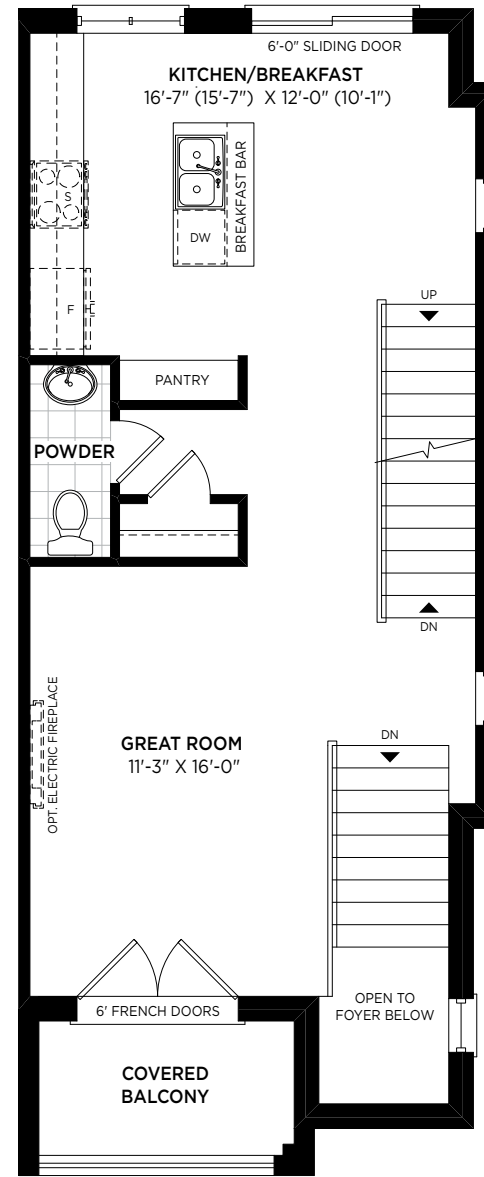
ENHANCED END UNIT



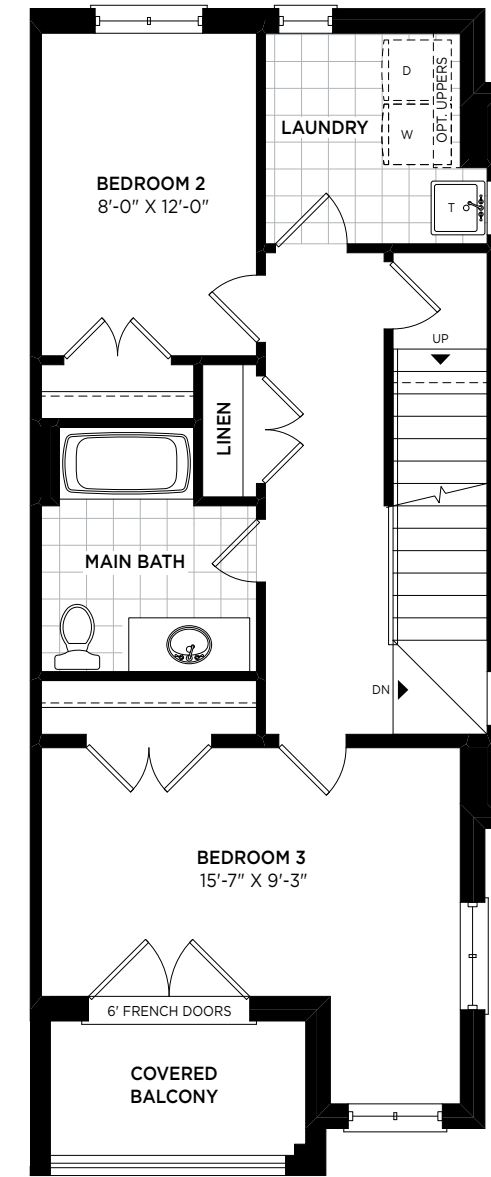
GROUND FLOOR



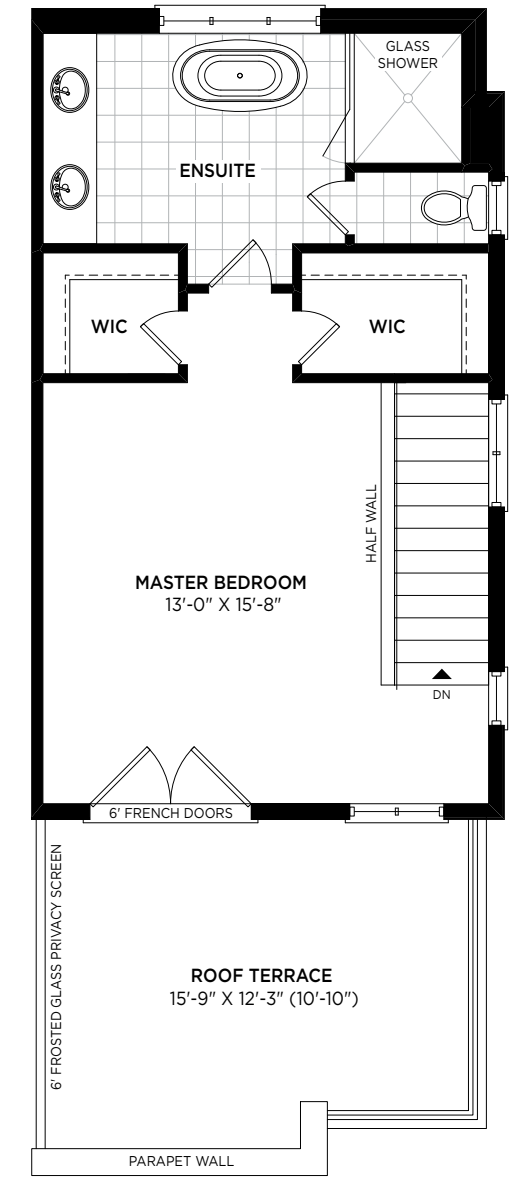
MAIN FLOOR



OPT. MAIN FLOOR



SECOND FLOOR



THIRD FLOOR

All plans, materials, dimensions and specifications are subject to change without notice. Actual usable floor space may vary from stated floor area. Interior and/or exterior steps may vary at any entranceway due to grading. Rendering is artist's concept. Floor plan is rendering concept. Portico and covered balcony conditions may vary based by elevation. Square footage includes open to below areas, as applicable. May 2022. (16-03)

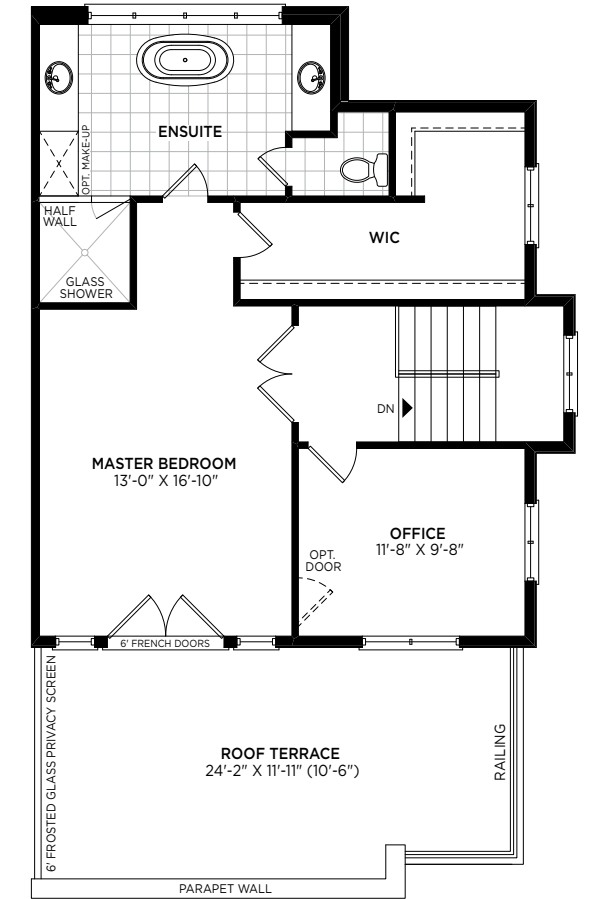
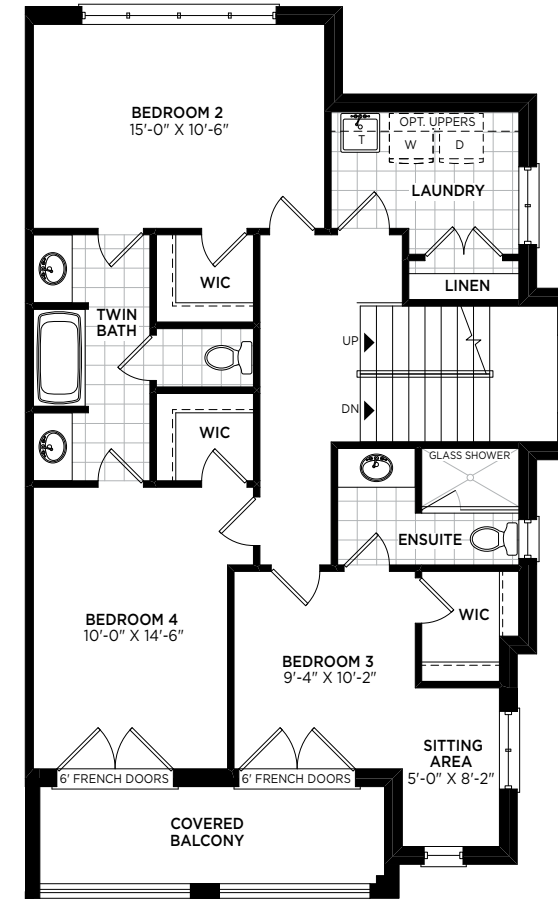
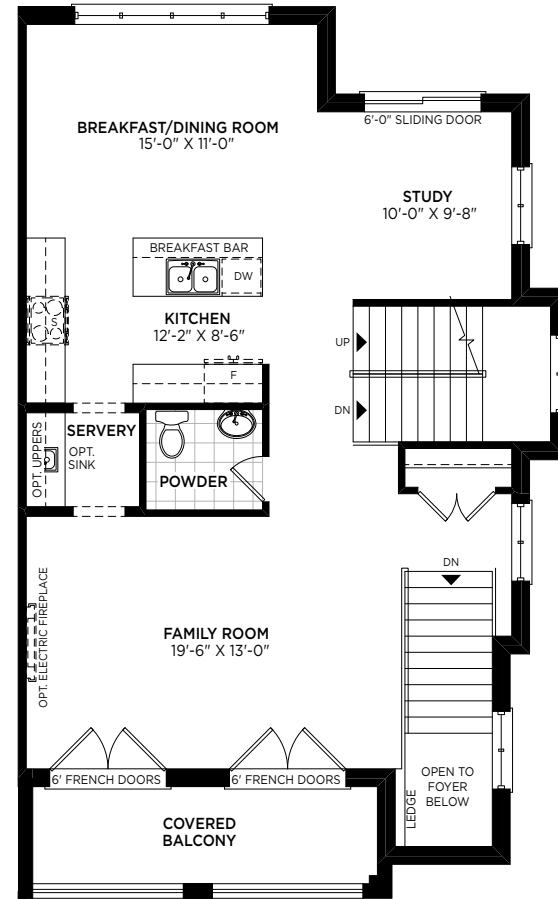
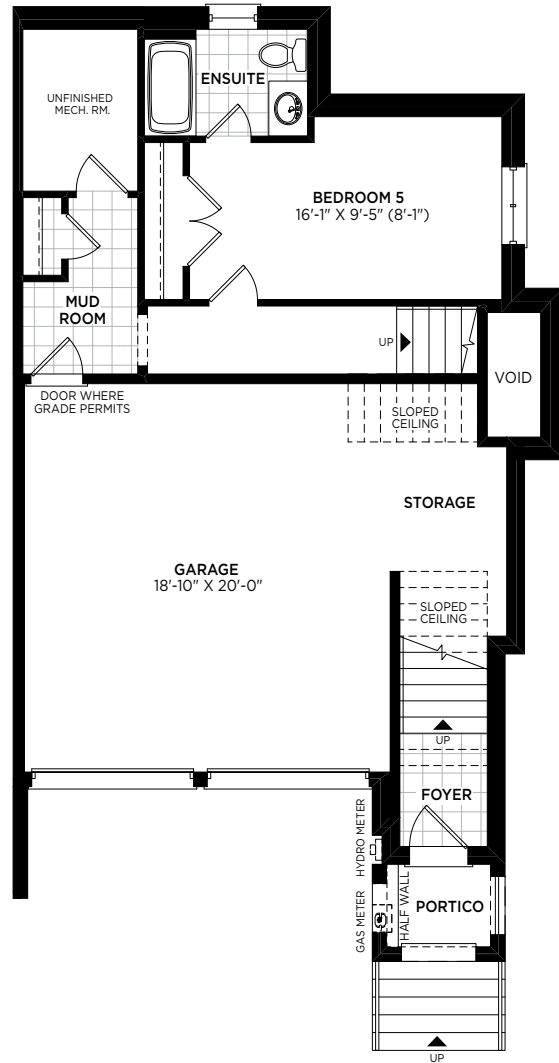
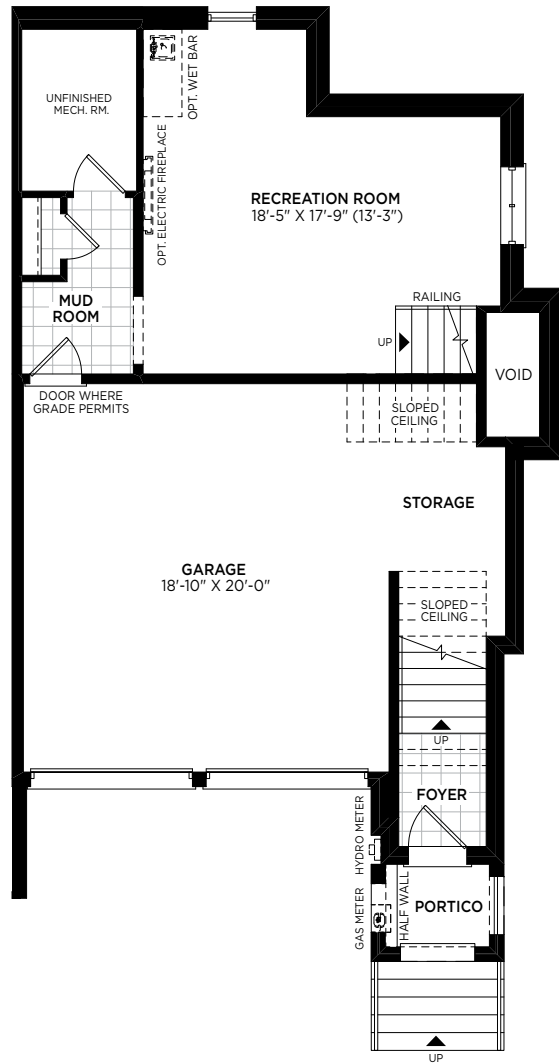




the baker
WOODLAND COLLECTION
 4 BED / 3.5 BATH
WAREHOUSE
 3,323 SQ. FT.



CORNER UNIT



GROUND FLOOR

OPT. GROUND FLOOR

MAIN FLOOR

SECOND FLOOR

THIRD FLOOR

All plans, materials, dimensions and specifications are subject to change without notice. Actual usable floor space may vary from stated floor area. Interior and/or exterior steps may vary at any entranceway due to grading. Rendering is artist's concept. Floor plan is rendering concept. Portico and covered balcony conditions may vary based by elevation. Square footage includes open to below areas, as applicable. May 2022. (16-04)

