

T I M E L E S S . E L E G A N T . U N I Q U E .



L U X U R Y L I V I N G R E I M A G I N E D .



A Timeless Expression of Luxury

Introducing Eleven Altamont, a rare collection of just 26 exquisite townhomes.

A boutique enclave nestled within a leafy tree-lined neighbourhood in prestigious North Toronto.

A Luxurious Outdoor Oasis



Custom-crafted luxury living with curated designer appointments including gourmet chef kitchens, stunning fireplaces, private rooftop terraces, a home office, spacious family rooms and luxurious bedrooms.

Simply put, Altamont is sophistication customized to your desires.

This urban oasis welcomes you with a spacious courtyard, an outdoor yoga retreat and children's play area, all just steps from Yonge Street with great shopping, dining and both the subway and GO.

This is truly luxury living reimagined.

Outdoor Living Perfected









Relax on your own Private Rooftop Terrace

At Eleven Altamont, every home has a large, private outdoor terrace. A place of your own to design as you like, to relax after a day of work. Watch the sun rise in the morning. Entertain friends, roll out your yoga mat, or just curl up with a good book. This is your time, your place, your little paradise in the city.





*Places to Wander.
Places to Ponder*

Eleven Altamont exudes urban sophistication inside and out. An intimate, boutique, landscaped community that has the feel of a lush natural retreat. A central courtyard to enjoy the fresh air, for kids to play safely and neighbours to mingle. A home grounded in the community, with connections to everywhere.

Nature in the city.

Luxury and greenery.

A rare opportunity.

ALTAMONT ROAD



COURTYARD

PARKING UNDERGROUND



KIDS PLAYGROUND

BICYCLE PARKING

PARKETTE

SHADED SITTING AREA

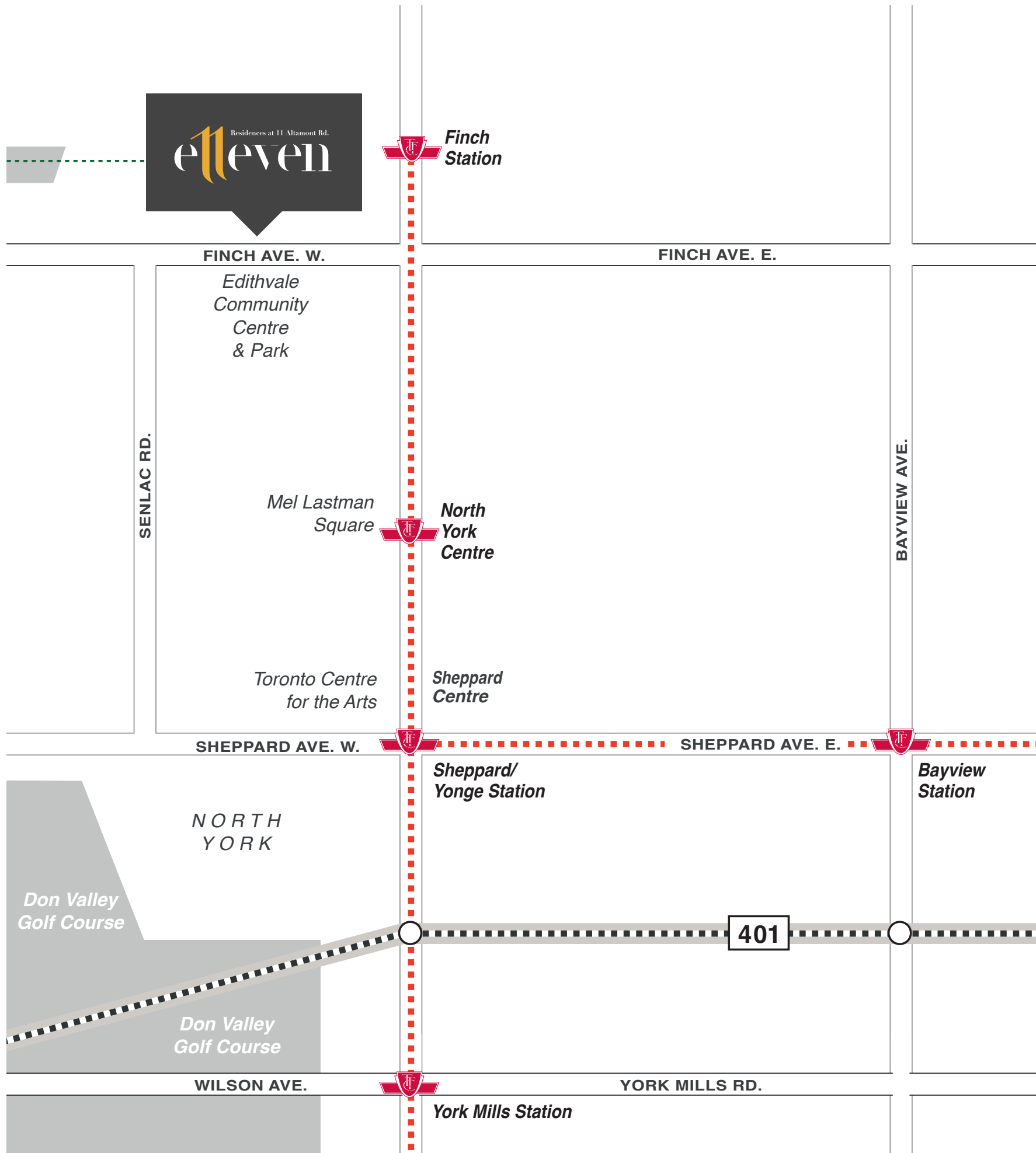
SHADED ACTIVITY AREA

DOG WALKING AREA



*Privacy and privilege in a
great Yonge Street locale.*

Each townhome is a statement of iconic modern design with clean lines and expansive windows. A sophisticated colour palette of dark brick and beige stone provides rich visual texture. Experience a sense of community while respecting social distancing and personal privacy. Enjoy the privilege of your own private front door, private terrace, private heating and cooling. When it comes to exclusivity, Eleven Altamont is in a class by itself.



Yonge Street Living... Redefined



Eleven Altamont is the perfect address to live the coveted Yonge Street lifestyle. Trendy shops and restaurants serving a variety of international cuisines. Parks, trails and green spaces for a welcome escape from the city. Great schools, libraries, rec centres and resources for the entire family. The subway at your doorstep. Farmers markets, fairs, festivals and more, just around the corner. It's urban excitement and energy at your doorstep.

9

MINUTE
WALK TO
FINCH
SUBWAY
STATION



7

MINUTE
BIKE RIDE
TO THE
COSMOPOLITAN
SHOPPING AND
DINING AT YONGE
AND SHEPPARD



4

MINUTE WALK TO
EDITHVALE
COMMUNITY
CENTRE

WALKER'S
PARADISE
DAILY ERRANDS
DO NOT REQUIRE
A CAR

64

61

BIKE
SCORE

100

TRANSIT
SCORE

34

MINUTES
FROM FINCH
STATION TO
ST. GEORGE
STATION



*Unrivaled
Connectivity
and Culture*



This is where it all comes together.
The convenience and connectivity of
the Finch multimodal transport hub.
The romance and drama of a memorable
theatre performance. The delectable appeal
of a mouth-watering recipe created by a
celebrated master chef. The tranquility of
a beautiful nature trail in the city. Luxury
urban living has never been so captivating.

A modern home office with a wooden desk, a lamp, a plant, and a patterned rug. The room features a dark grey wall, a wooden desk with a black metal frame, and a patterned rug. A large potted plant is in the foreground, and a desk with a computer monitor and various decorative items is in the background. The lighting is warm and focused on the desk area.

A Home Office that Truly Works

Today our world has changed. Work-from-home is the new normal. At Eleven Altamont, we're thinking ahead and offering flex designs to integrate efficient work spaces into the home. Hold Zoom meetings, consult with clients, fine tune your presentation, all in the safety, comfort and privacy of your home office.

Your home is now more than just a place to live.

Here are some creative ways to personalize your space.



Home Gym

Bring home the gym experience and workout in the safety and privacy of your home.



Office

Create your home office fully wired and networked for Zoom meetings and lots more.



Guest Room

A welcoming space for your family and friends when they visit.



Arts Corner

A dedicated arts and crafts area for all your masterpieces.



Den

Your den will be ideal for watching TV or enjoying a quiet place to read.



Home Schooling

A fun learning environment for online studying and home schooling with a difference.



Curated Luxury Living

Every single feature is expertly curated by an Interior Designer to provide the pinnacle of refined living. Whether it's the chef inspired kitchen with an extra large island, state-of-the-art Miele appliances, or a freestanding bathtub in the Primary Ensuite, every luxury brand and feature chosen reflects the inimitable quality. With a selection second to none, you have the privilege of creating your personalized luxury experience that's tailored to your tastes.

SUPERIOR INTERIOR FEATURES

- *A stylish electric fireplace as the centre feature of the Living Room**
- *Walk on quality 3 1/2" hardwood flooring throughout each level in your choice of colour***
- *Elegant oak stairs will take you from the main level to the 3rd level, featuring upgraded metal pickets and oak handrail ***
- *9 ft. ceilings on all levels (except for mechanical boxing and washrooms)*
- *Modern 5" baseboards and casings throughout*
- *Classic smooth ceilings on each level**
- *Stylish 2 panel "safe and sound" swing doors**
- *Trendy black finish lever passage and privacy sets*
- *The Laundry room will showcase a stackable front-loading washer and dryer*



Gourmet Chef Kitchens

KITCHEN FEATURES

- *Expansive luxury granite or quartz kitchen countertops with breakfast bar and a designer selected square edge ***
- *Premium Designer MIELE Kitchen Appliances ***
- *Chic single-lever kitchen faucet ***
- *Modern backsplash in a selection of tiles*
- *Upgraded stainless steel canopy hood fan ***



Relax and Rejuvenate



LUXURY BATHROOM FEATURES

- *Soak up the bubbles in the freestanding bathtub in the Primary Ensuite*
- *Frameless glass shower including a glass door in all bathrooms with separate showers**
- *Spa inspired wall mounted Rainhead fixture with a handheld shower attachment in the Primary Ensuite.***
- *Beautiful vanity cabinetry with exquisite granite or quartz countertops, a 4" counter backsplash, as well as under-mount sinks in all bathrooms.***
- *Double under-mount sinks in each spacious Primary Ensuite **

*as per plan **from vendor samples





Your Personal Retreat

HOME COMFORT FEATURES

- *You select the location of the 10 LED pot lights on main or second level*
- *Convenient USB outlets in kitchen, and all bedrooms*
- *100-amp electrical service*
- *Cleaning is a breeze with the fully installed central vacuum system*
- *Conder Developments Smart Home Package including Video Doorbell, Smart Thermostat and Smart Door Lock*





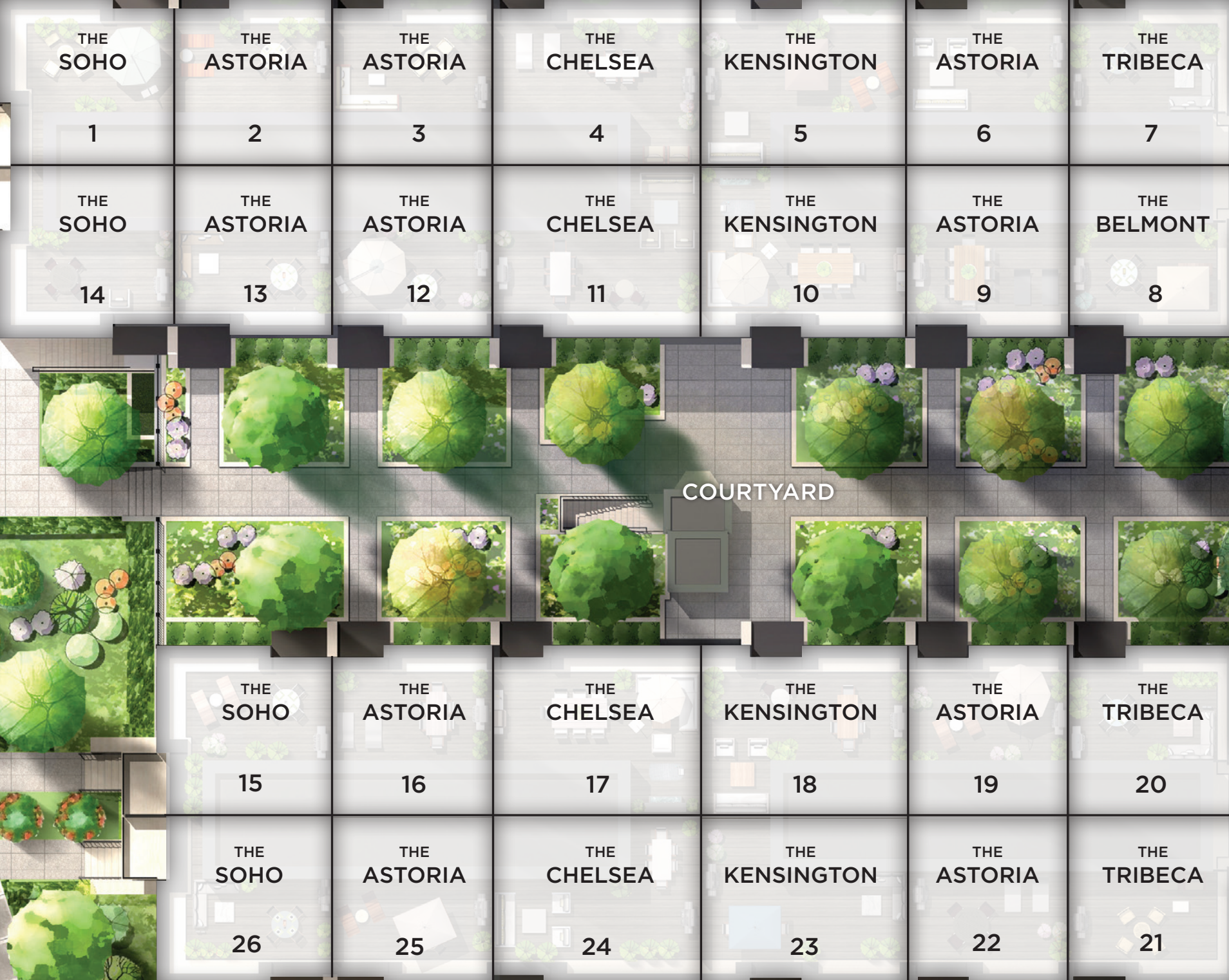
*Designed for
a Memorable
First Impression*

CONTEMPORARY URBAN ARCHITECTURAL FEATURES

• *Your own personal Private Terrace space*



ALTA MONT ROAD



PARKING UNDERGROUND

COURTYARD

Actual usable space may vary from stated area. Dimensions, specifications and architectural detailing are subject to changes without notice. E. & O.E. All renderings and landscape features are artist's concept.



Your Space. Your Way. Your Life

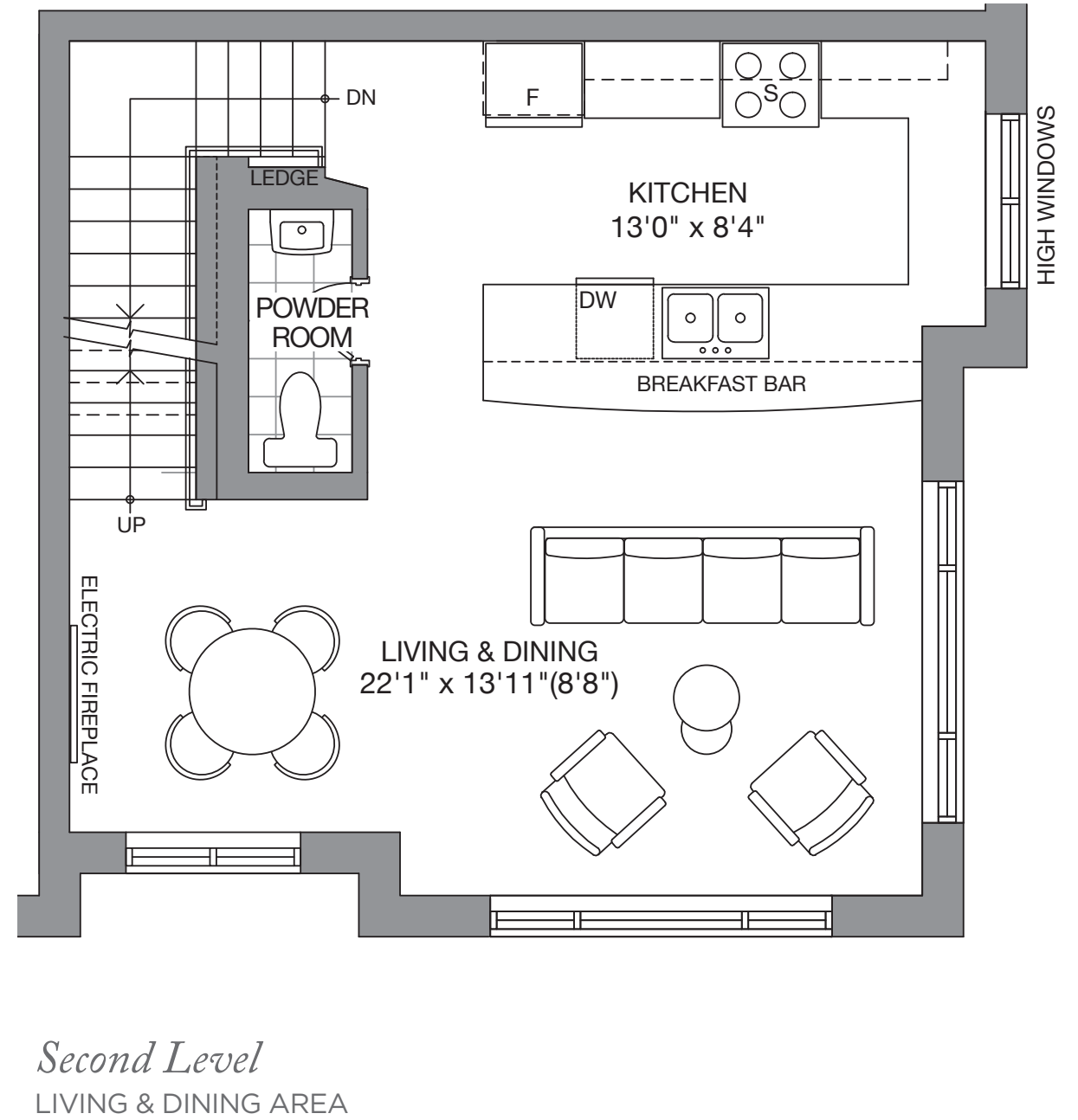
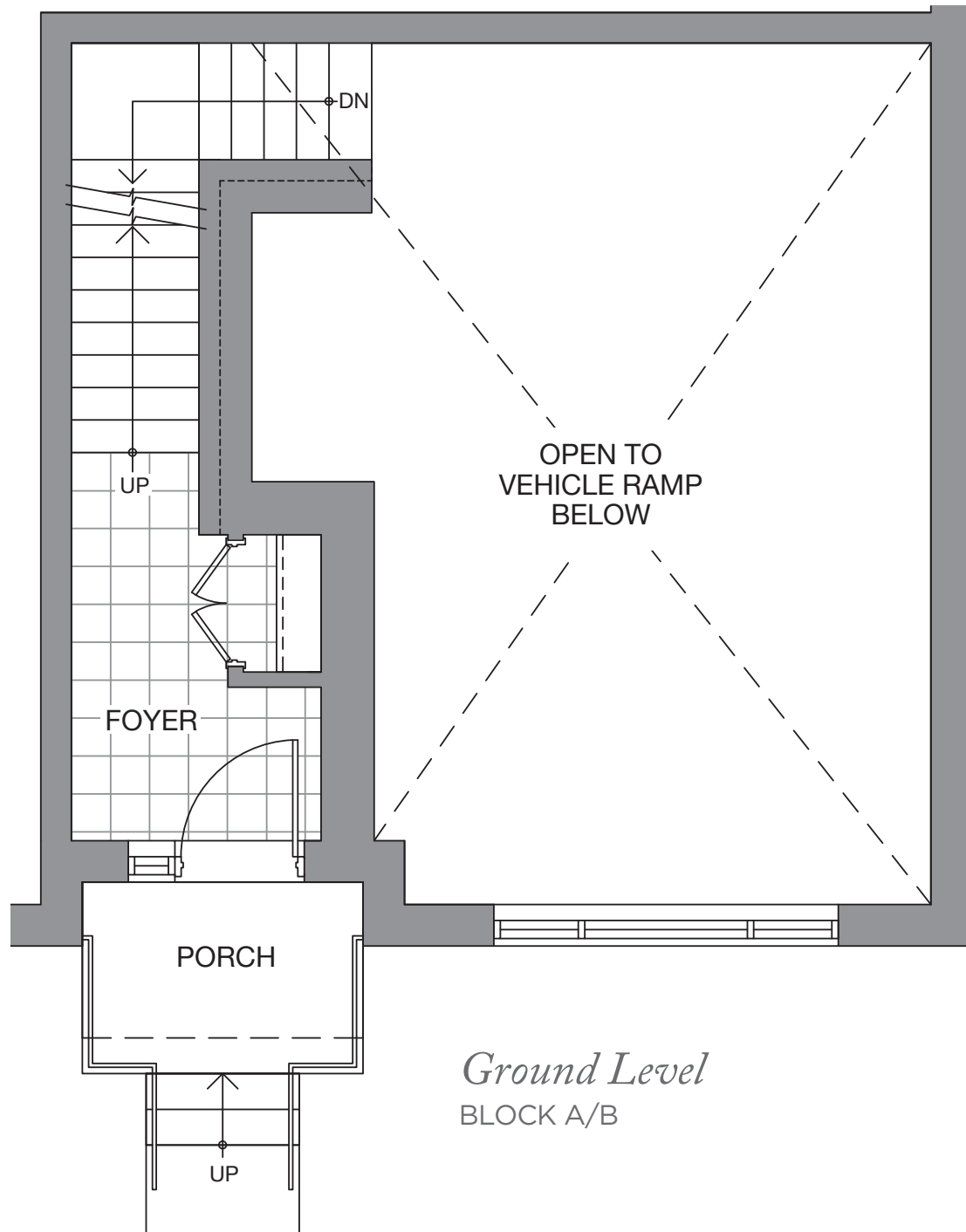
At Eleven Altamont, we take customization to a new level of individual expression. We make space work for you. Tell us where you want your primary bedroom, and we will put it there. Also, would you prefer a home office? An extra Bedroom or a spacious Family Room? Just let us know. This is astute functionality without compromising bespoke design and thoughtful features.

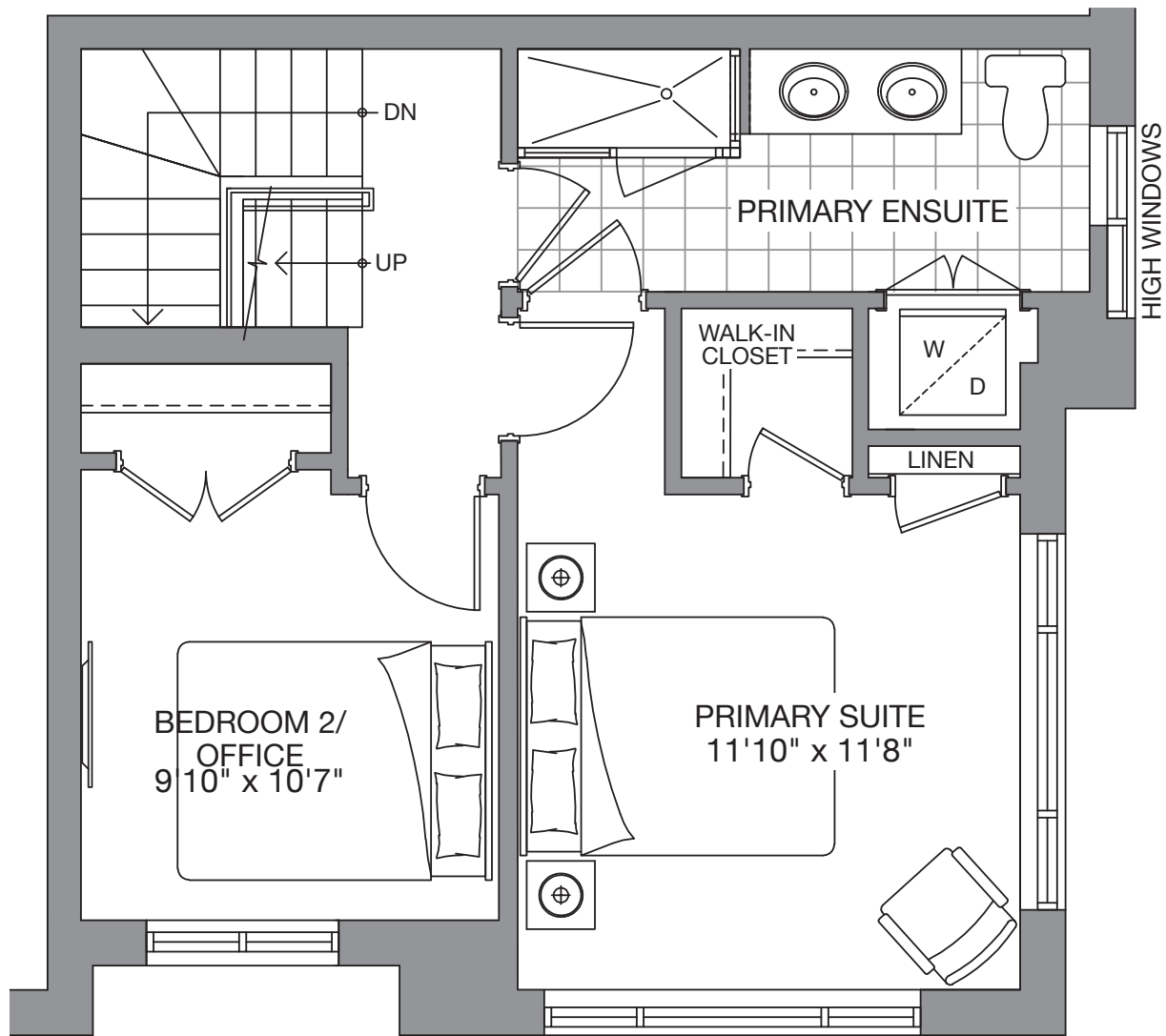
With home sizes ranging from 2,024 to 2,514 sq. ft.* there's one that's just right for your family at Eleven Altamont.

*Includes Terrace

The Belmont

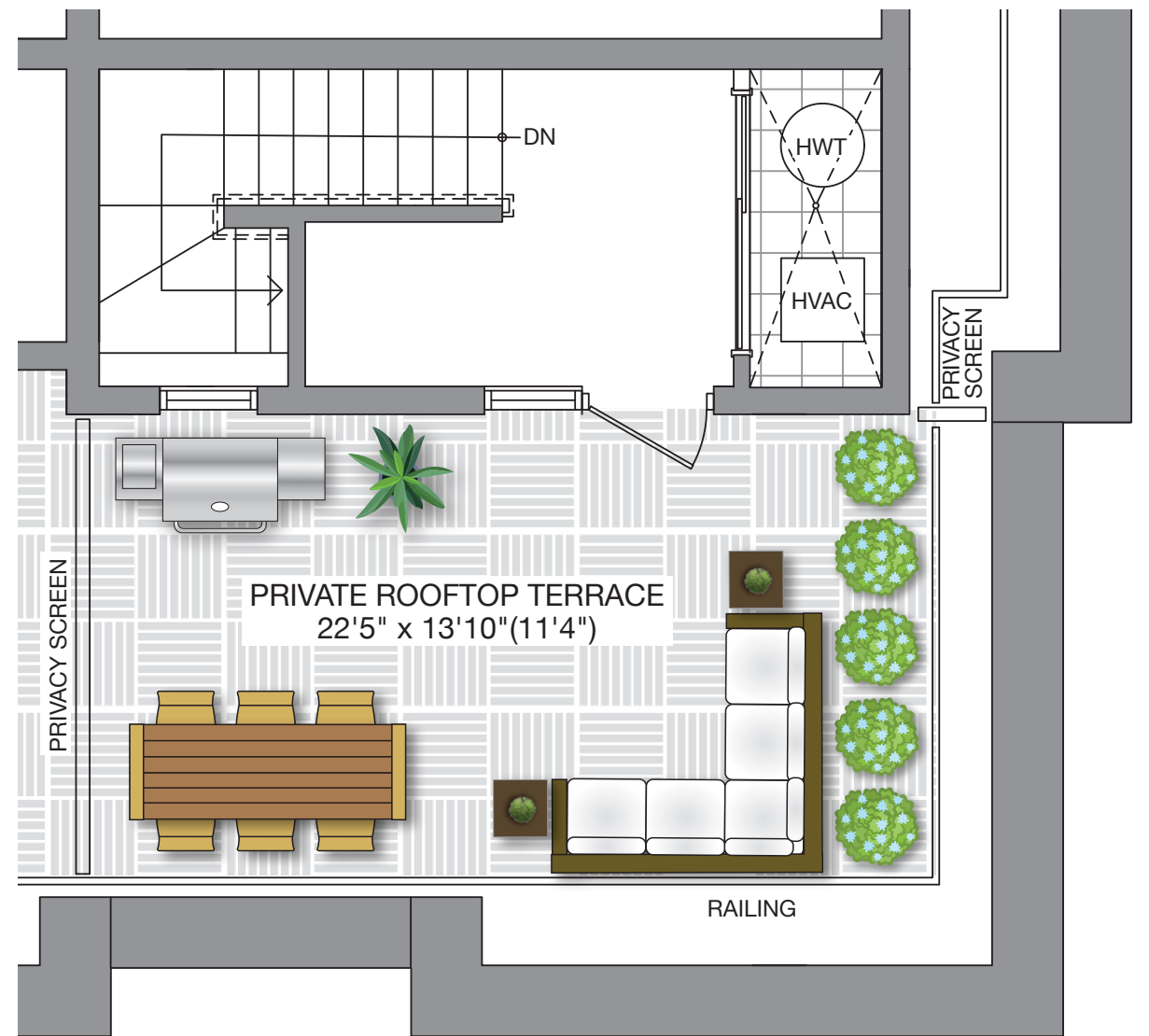
1,708 SQ. FT. (INCLUDES 274 SQ. FT. ROOFTOP TERRACE)





Third Level

PRIMARY SUITE & BEDROOM WITH LAUNDRY

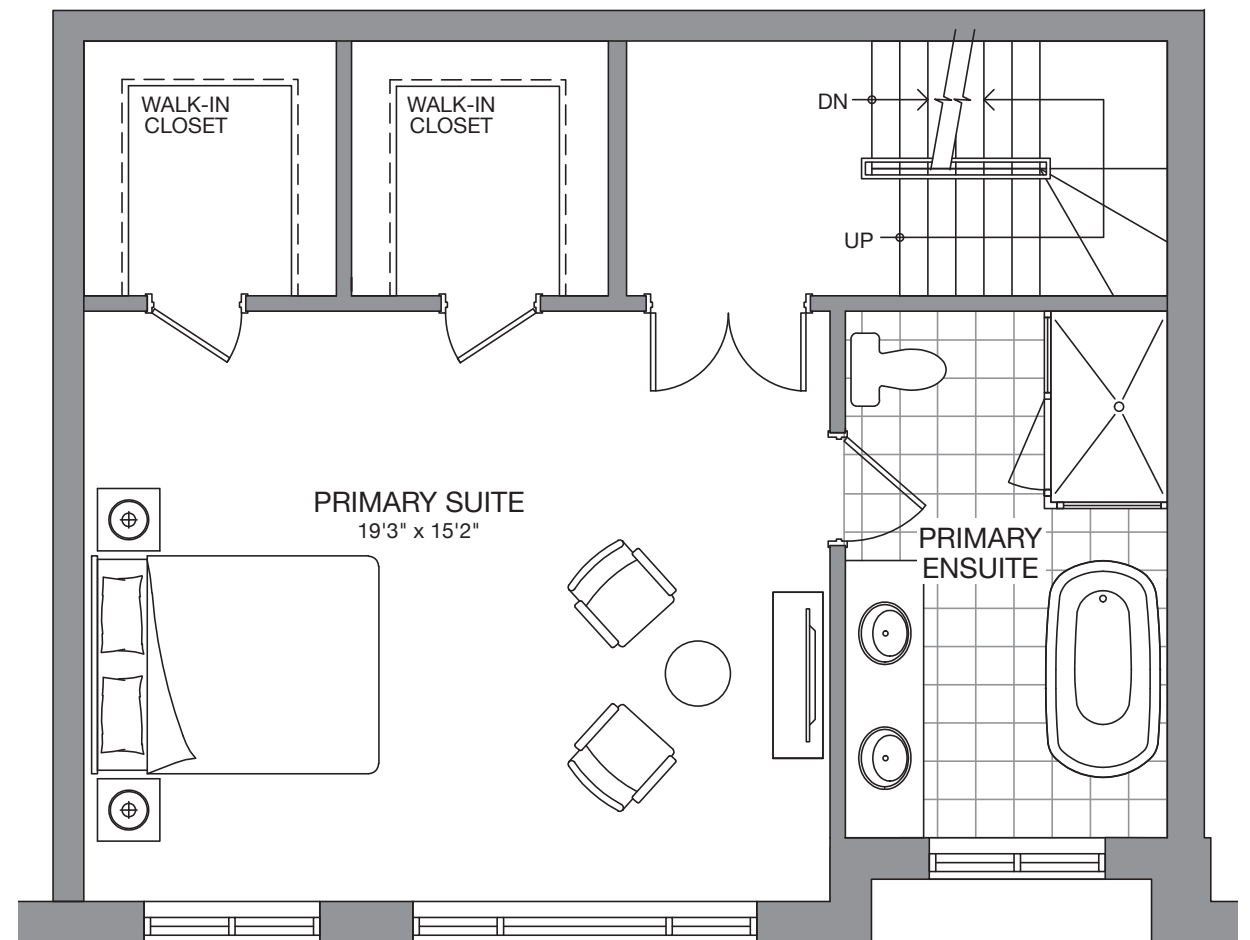
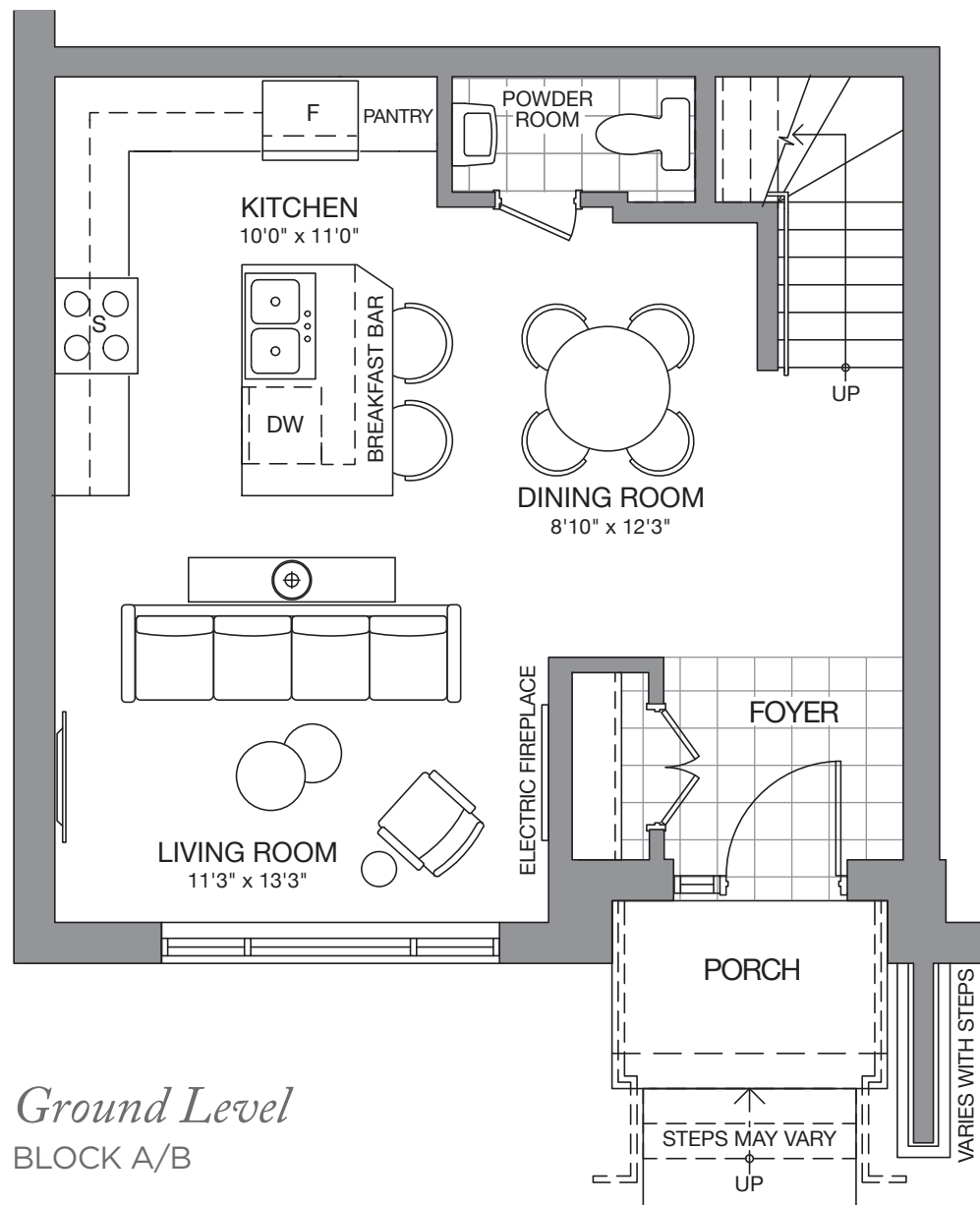


Private Terrace

The Chelsea

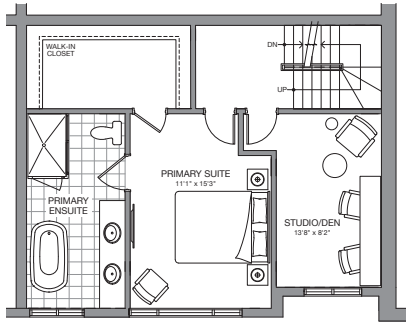
2,514 SQ. FT. (INCLUDES 490 SQ. FT. ROOFTOP TERRACE)

Flex Design



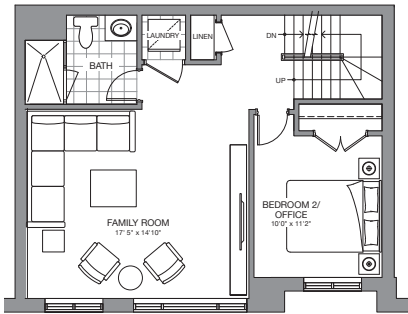
Second Level
PRIMARY SUITE

Customize your living space with these fabulous "Flex-design" options



PRIMARY SUITE & STUDIO/DEN

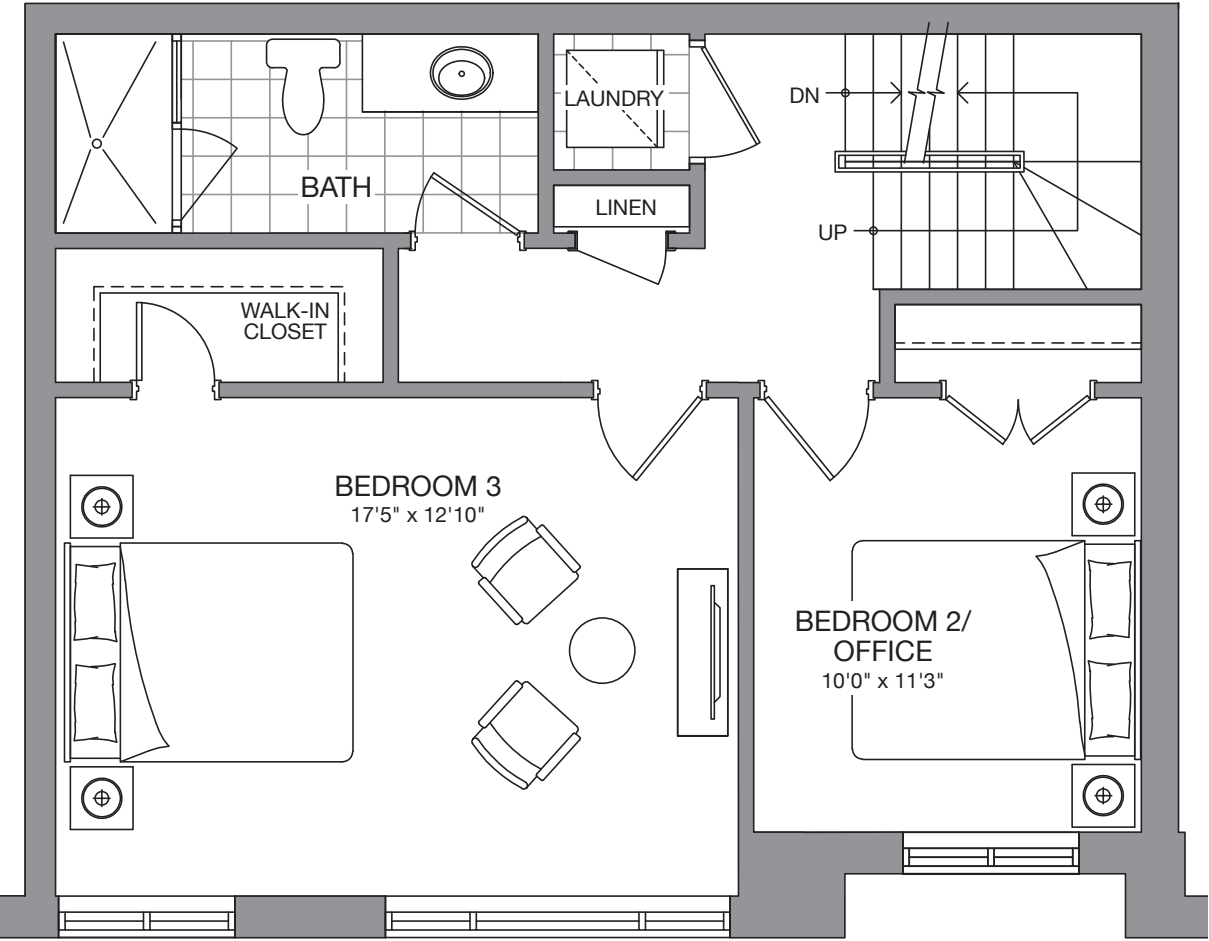
2nd level option



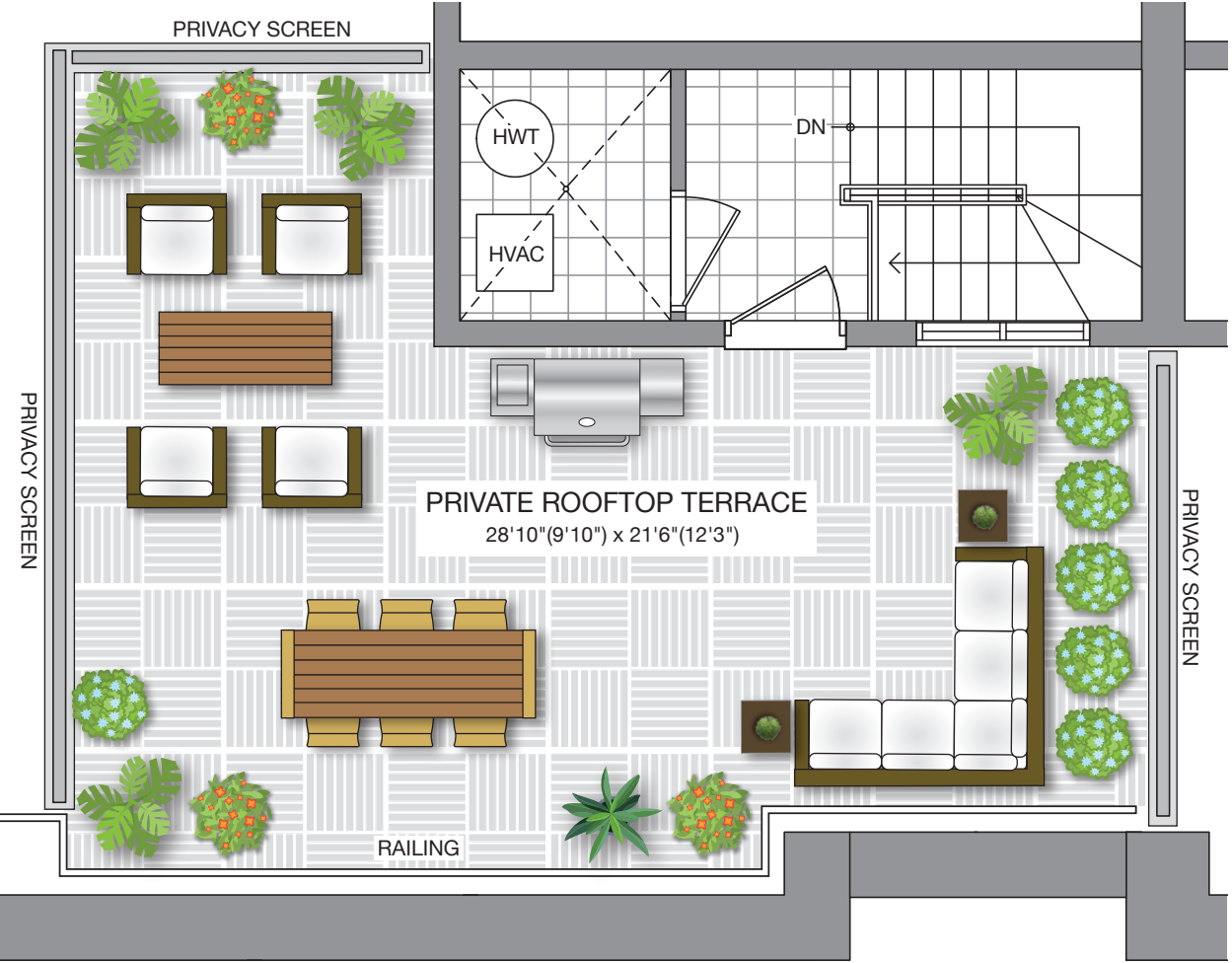
FAMILY ROOM & BEDROOM WITH LAUNDRY

3rd level option

Flex Design



Third Level
2 BEDROOM WITH LAUNDRY



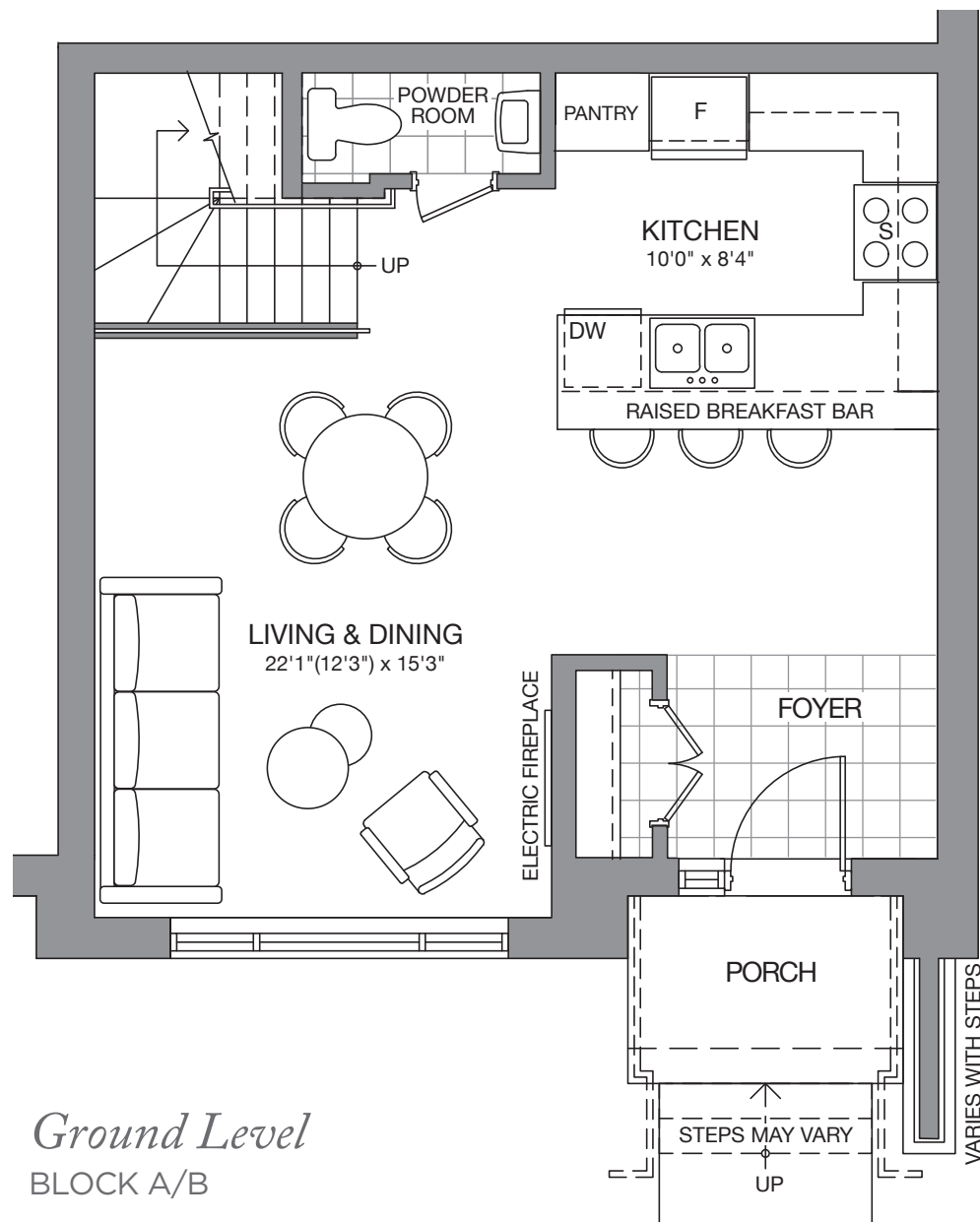
Private Terrace

Actual usable space may vary from stated area. Dimensions, specifications and architectural detailing are subject to changes without notice. E. & O.E. All renderings and landscape features are artist's concept. MODEL C.

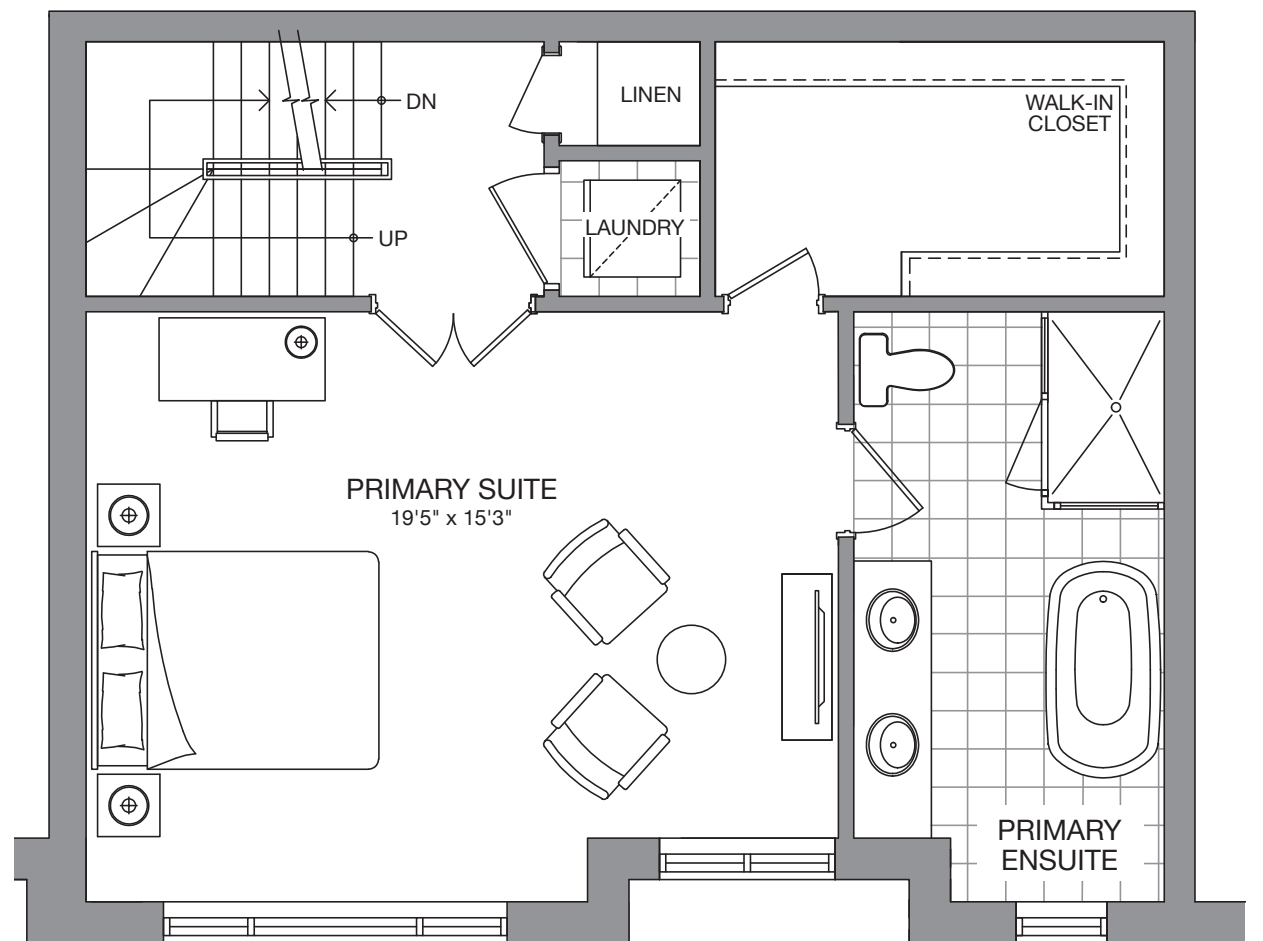
The Kensington

2,509 SQ. FT. (INCLUDES 488 SQ. FT. ROOFTOP TERRACE)

Flex Design

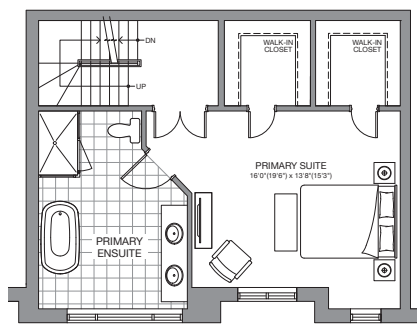


Ground Level
BLOCK A/B



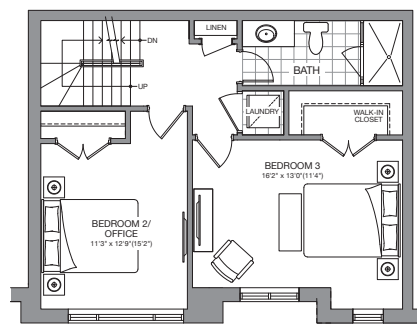
Second Level
PRIMARY SUITE WITH LAUNDRY

Customize your living space with these fabulous "Flex-design" options

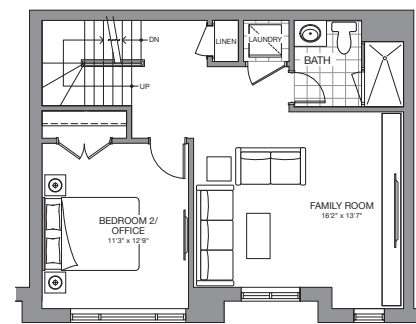


PRIMARY SUITE

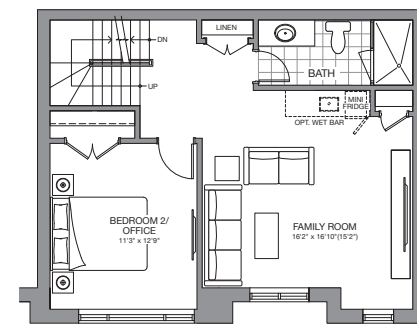
2nd level option



2 BEDROOM WITH LAUNDRY



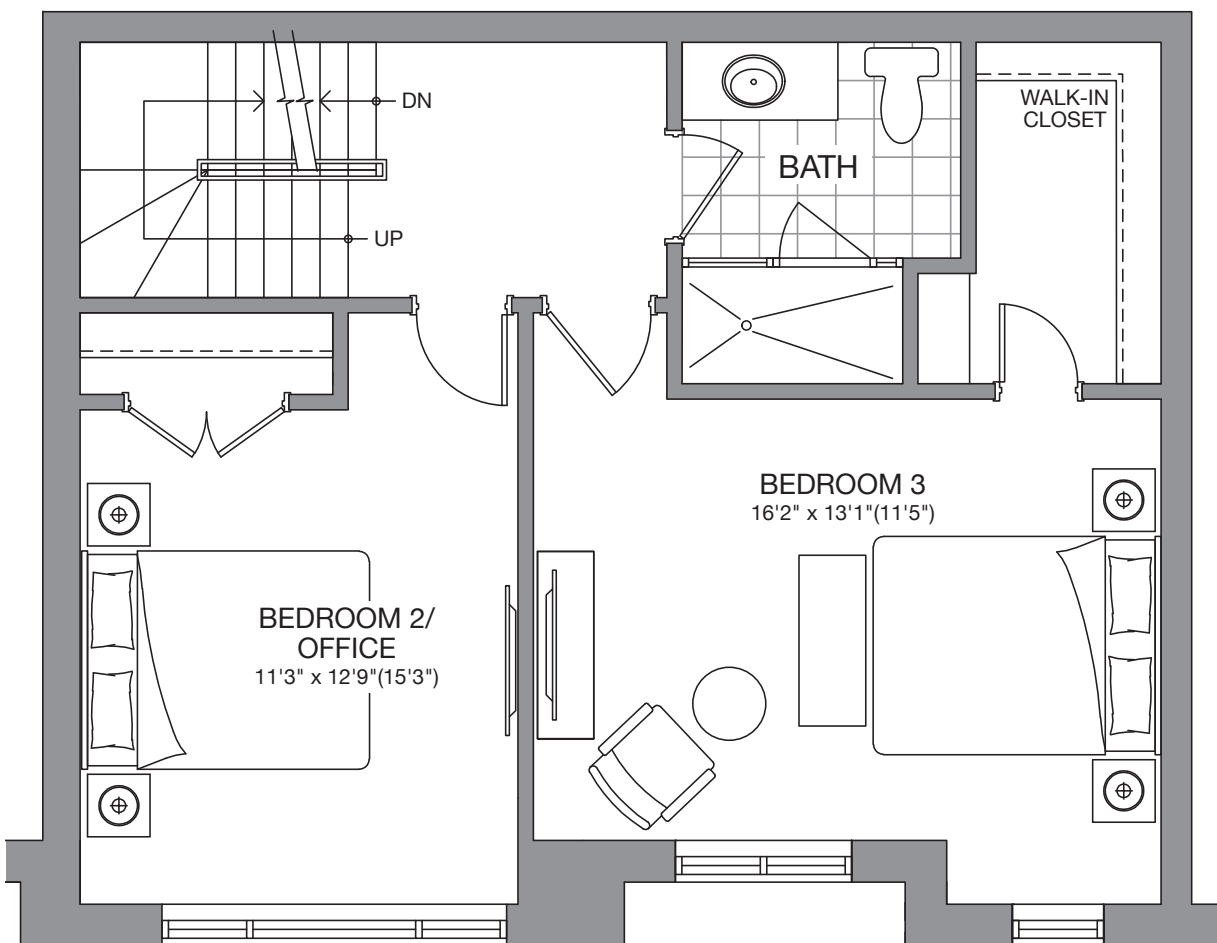
FAMILY ROOM & BEDROOM WITH LAUNDRY ROOM



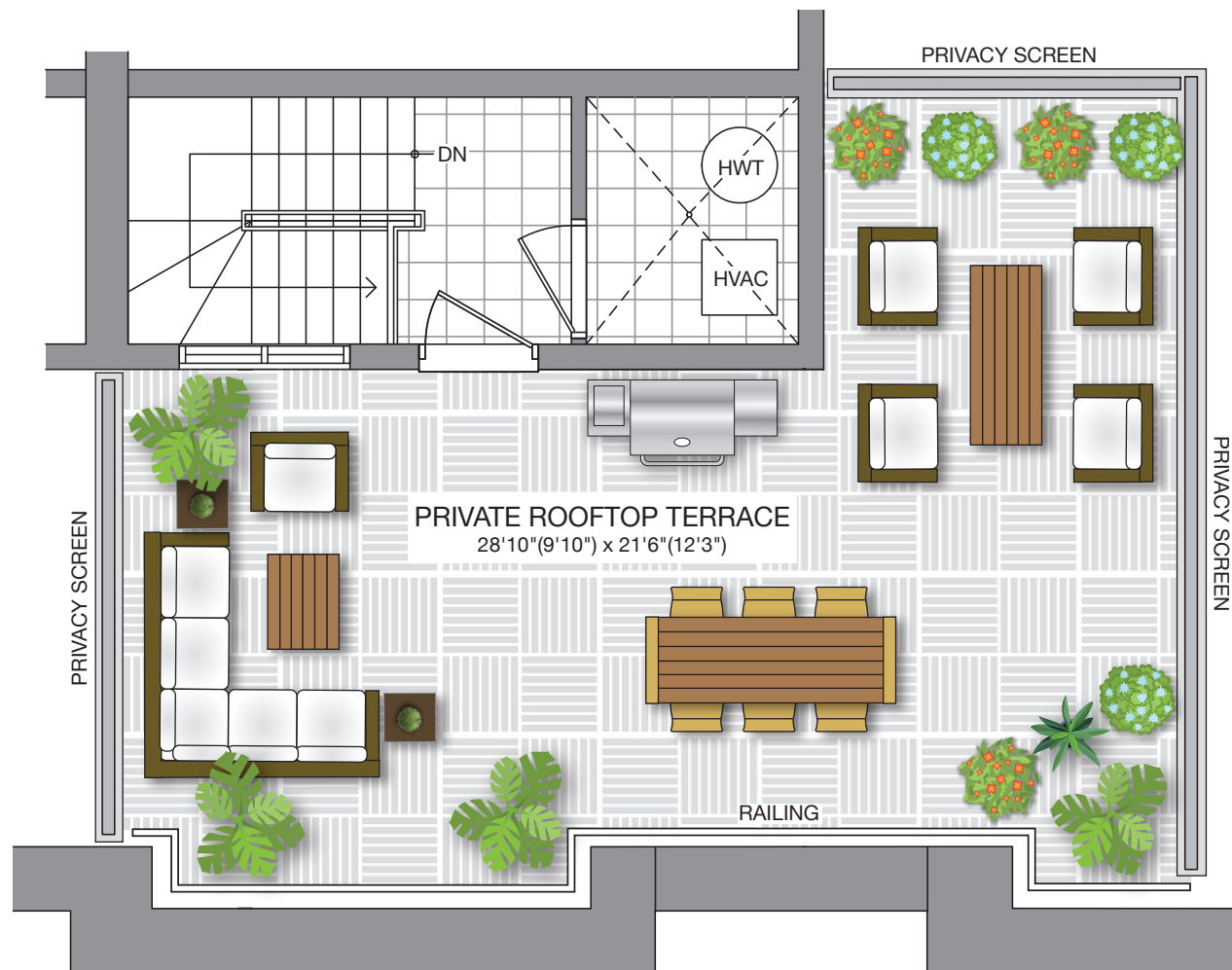
FAMILY ROOM & BEDROOM

3rd level options

Flex Design



Third Level
2 BEDROOM

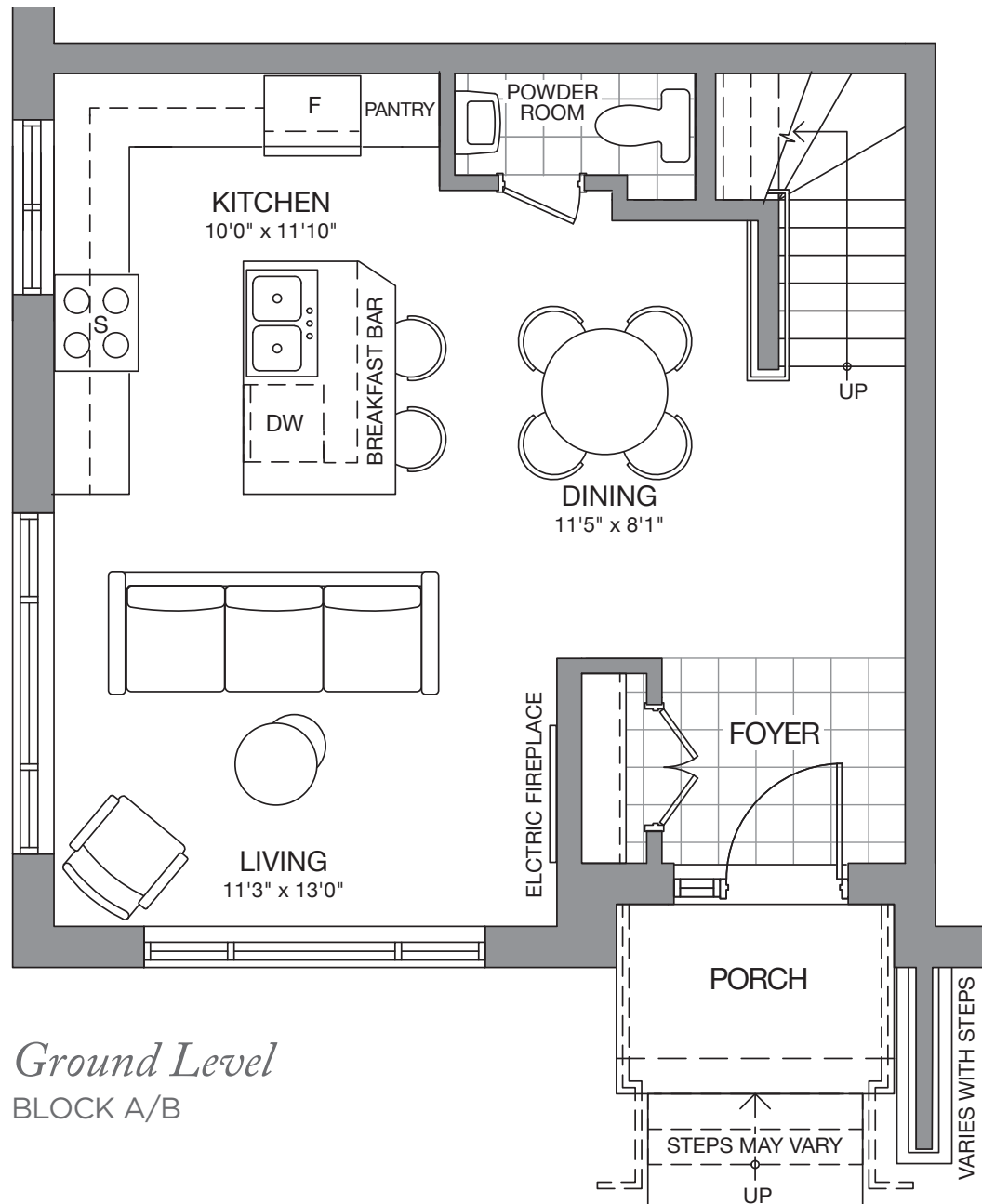


Private Terrace

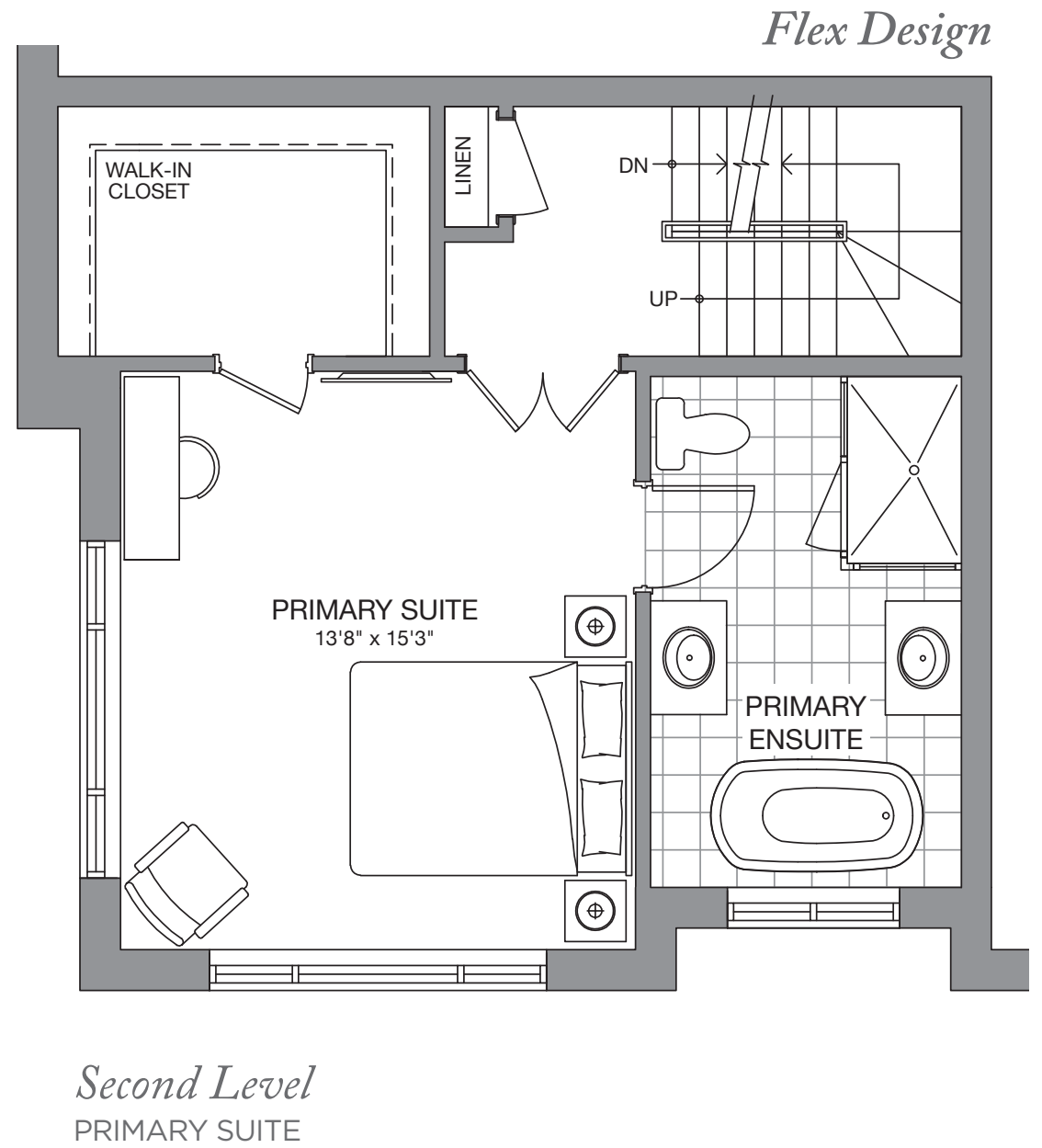
Actual usable space may vary from stated area. Dimensions, specifications and architectural detailing are subject to changes without notice. E. & O.E. All renderings and landscape features are artist's concept. MODEL H.

The Tribeca

2,123 SQ. FT. (INCLUDES 323 SQ. FT. ROOFTOP TERRACE)



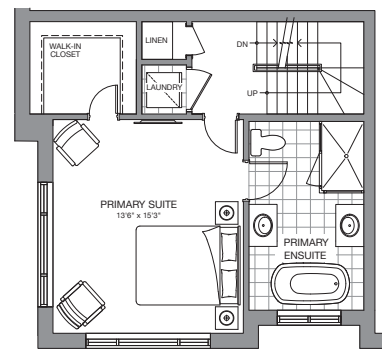
Ground Level
BLOCK A/B



Second Level
PRIMARY SUITE

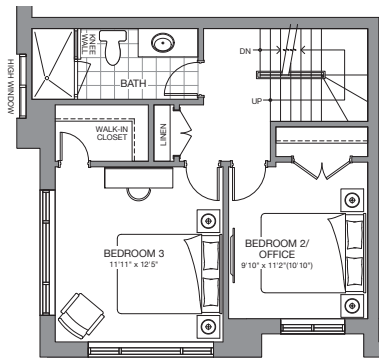
Flex Design

Customize your living space with these fabulous "Flex-design" options

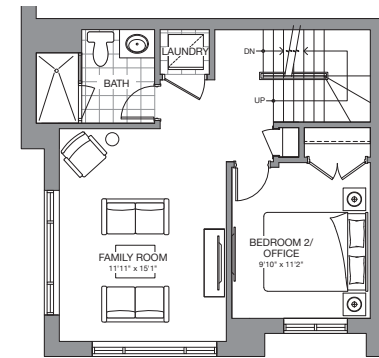


PRIMARY SUITE WITH LAUNDRY

2nd level option

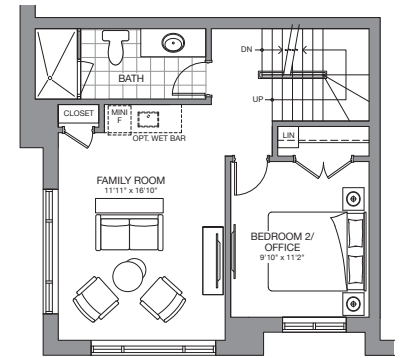


2 BEDROOM



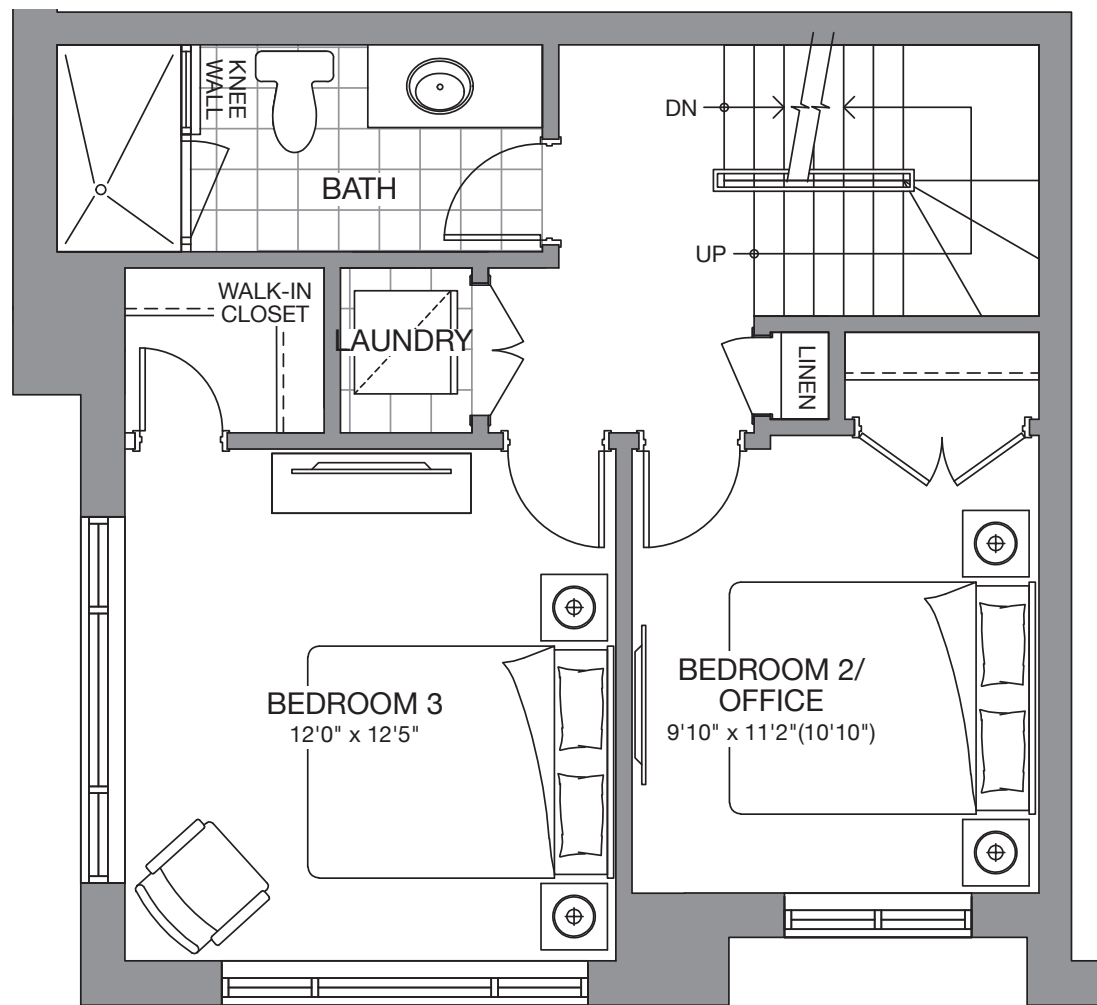
FAMILY ROOM & BEDROOM WITH LAUNDRY

3rd level options

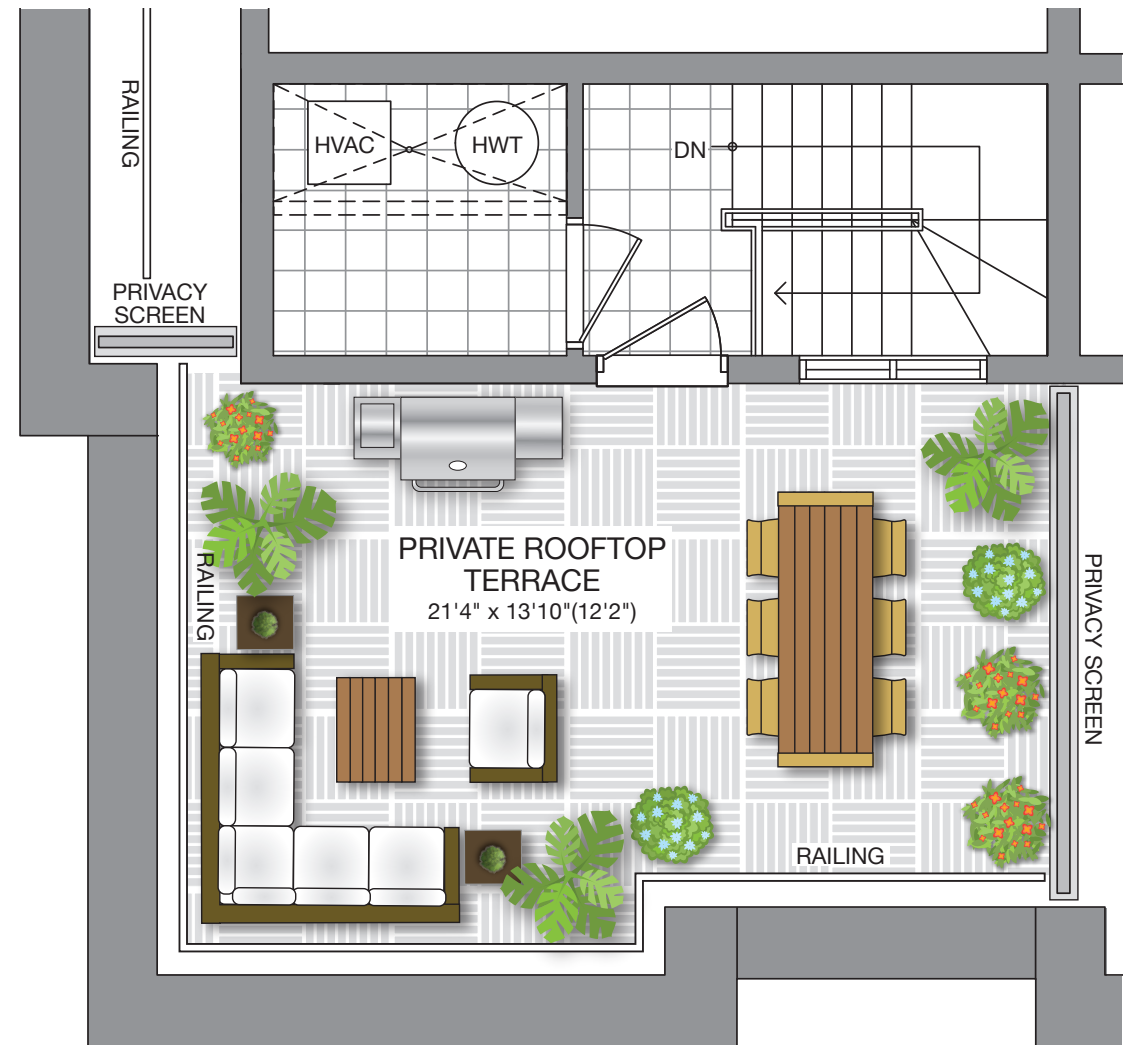


FAMILY ROOM & BEDROOM/OFFICE

Flex Design



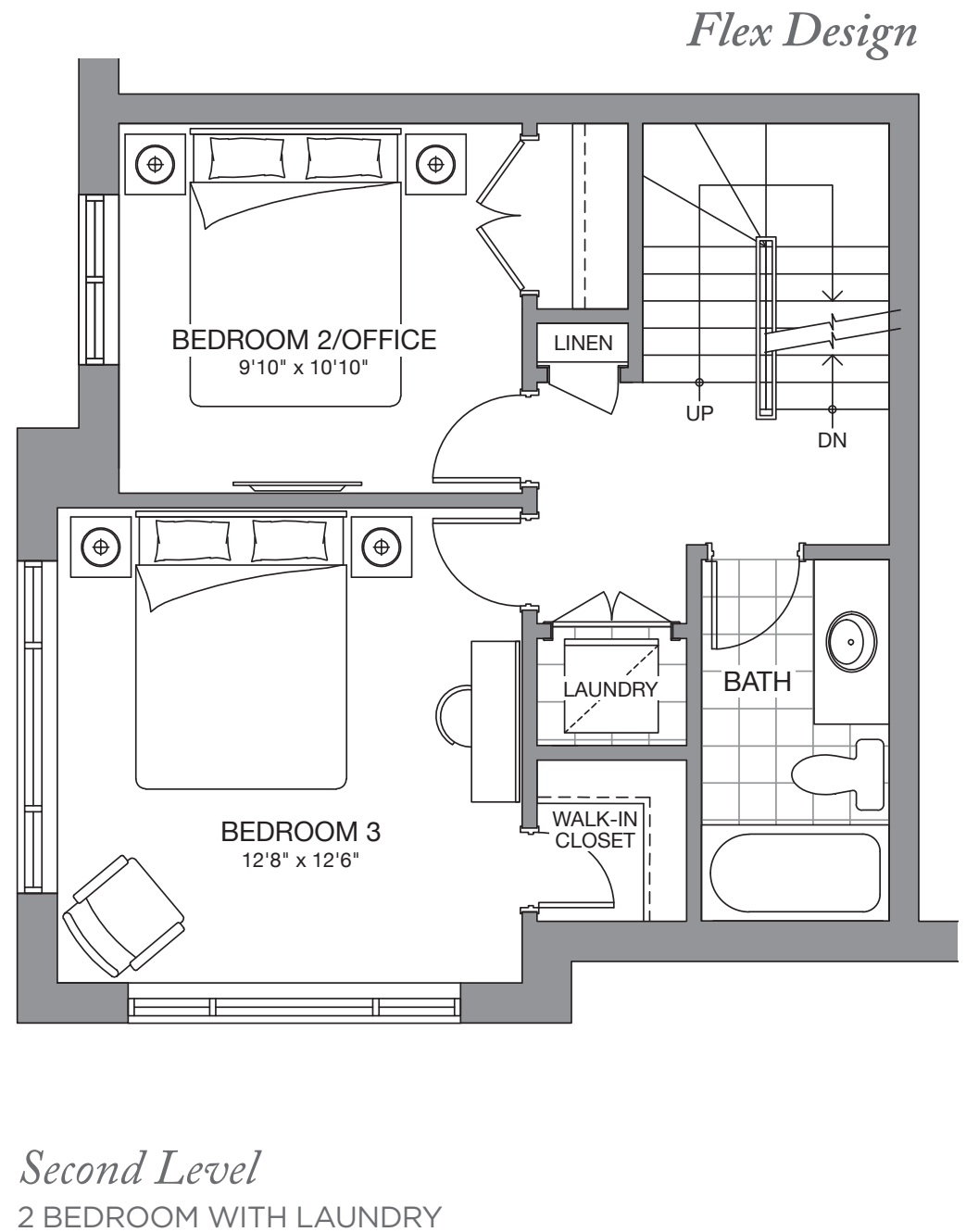
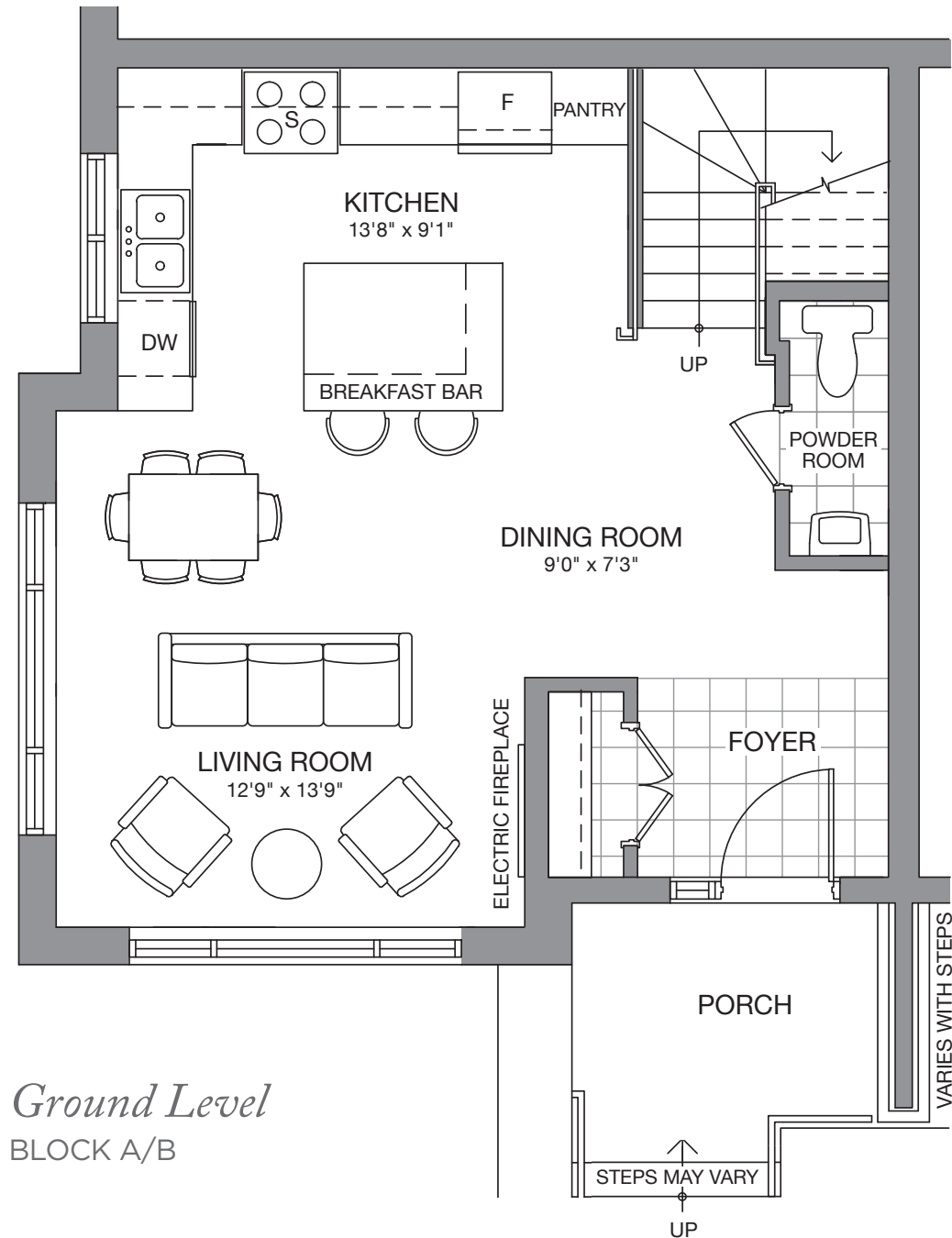
Third Level
2 BEDROOM WITH LAUNDRY



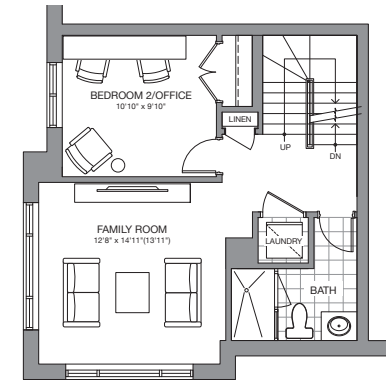
Private Terrace

The Soho

2,084 SQ. FT. (INCLUDES 321 SQ. FT. ROOFTOP TERRACE)

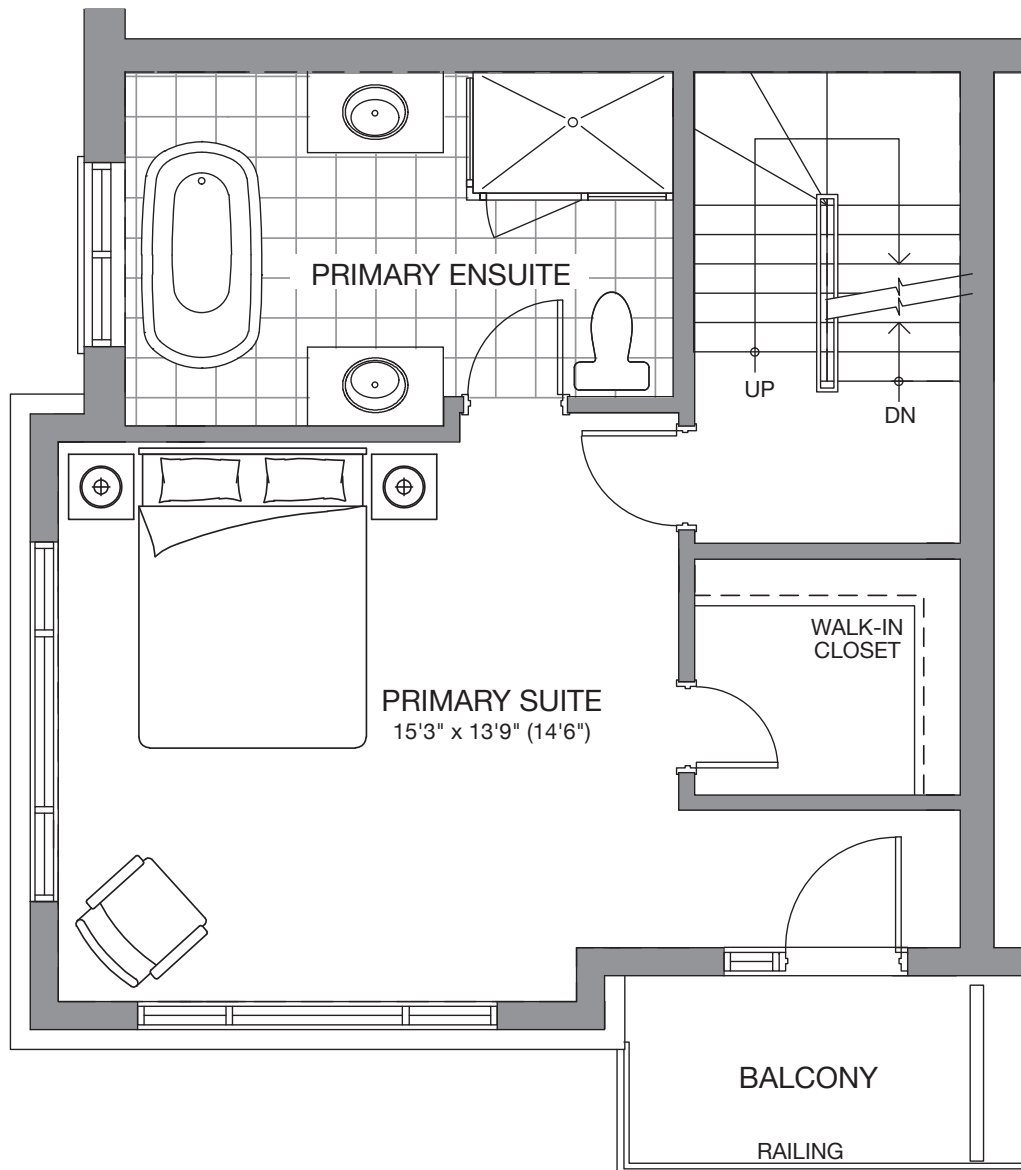


Customize your living space with this fabulous "Flex-design" option

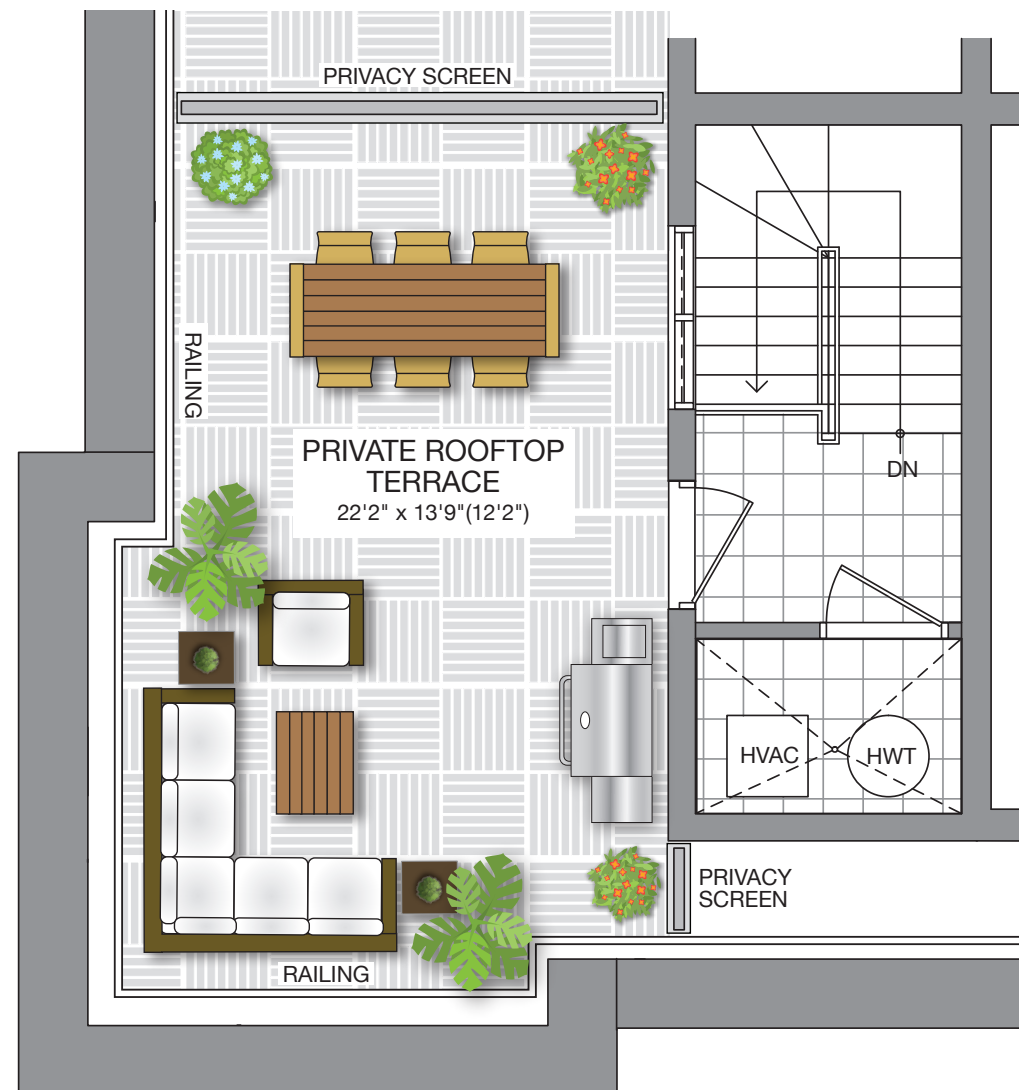


FAMILY ROOM & BEDROOM/OFFICE WITH LAUNDRY

2nd level option



Third Level
PRIMARY SUITE

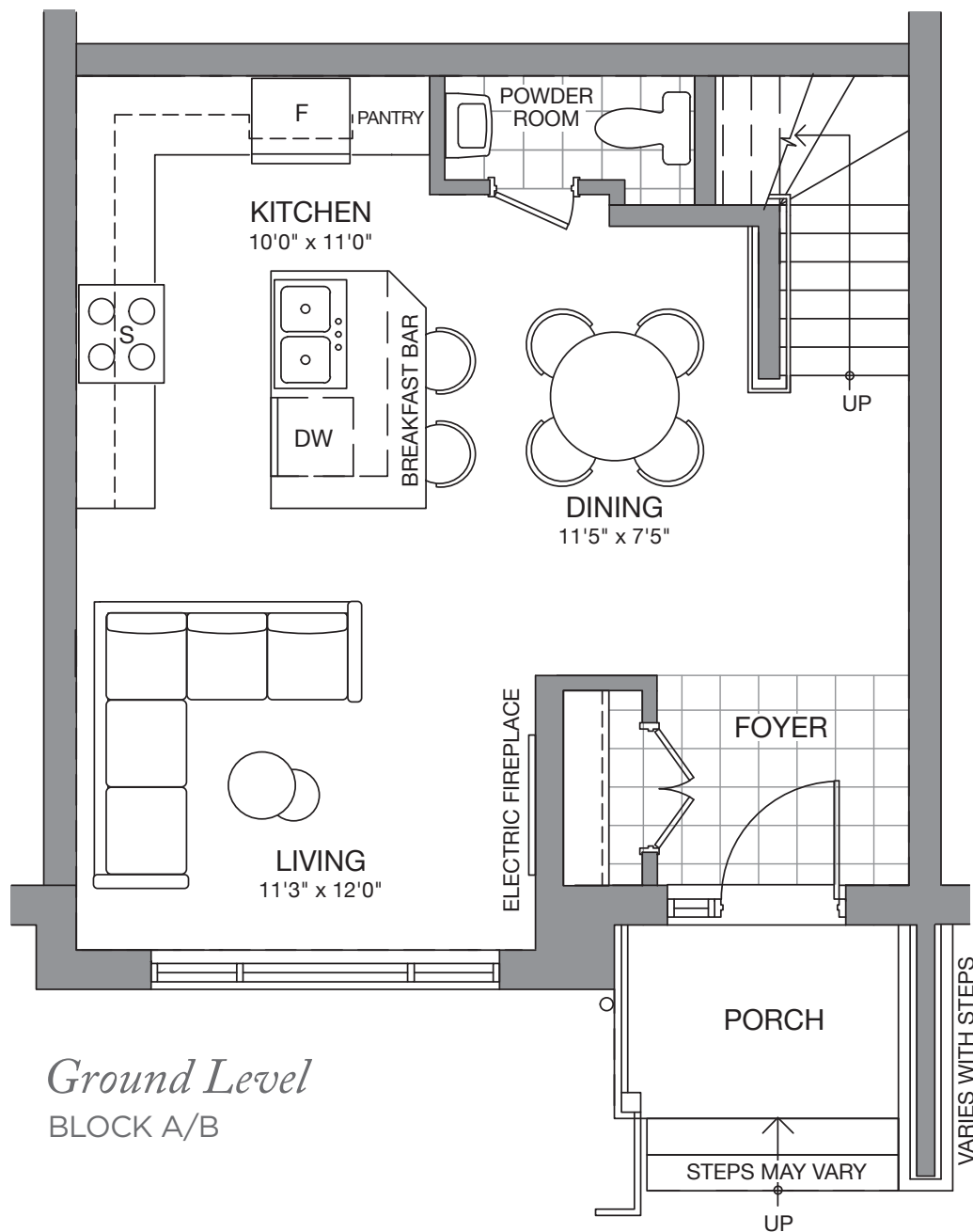


Private Terrace

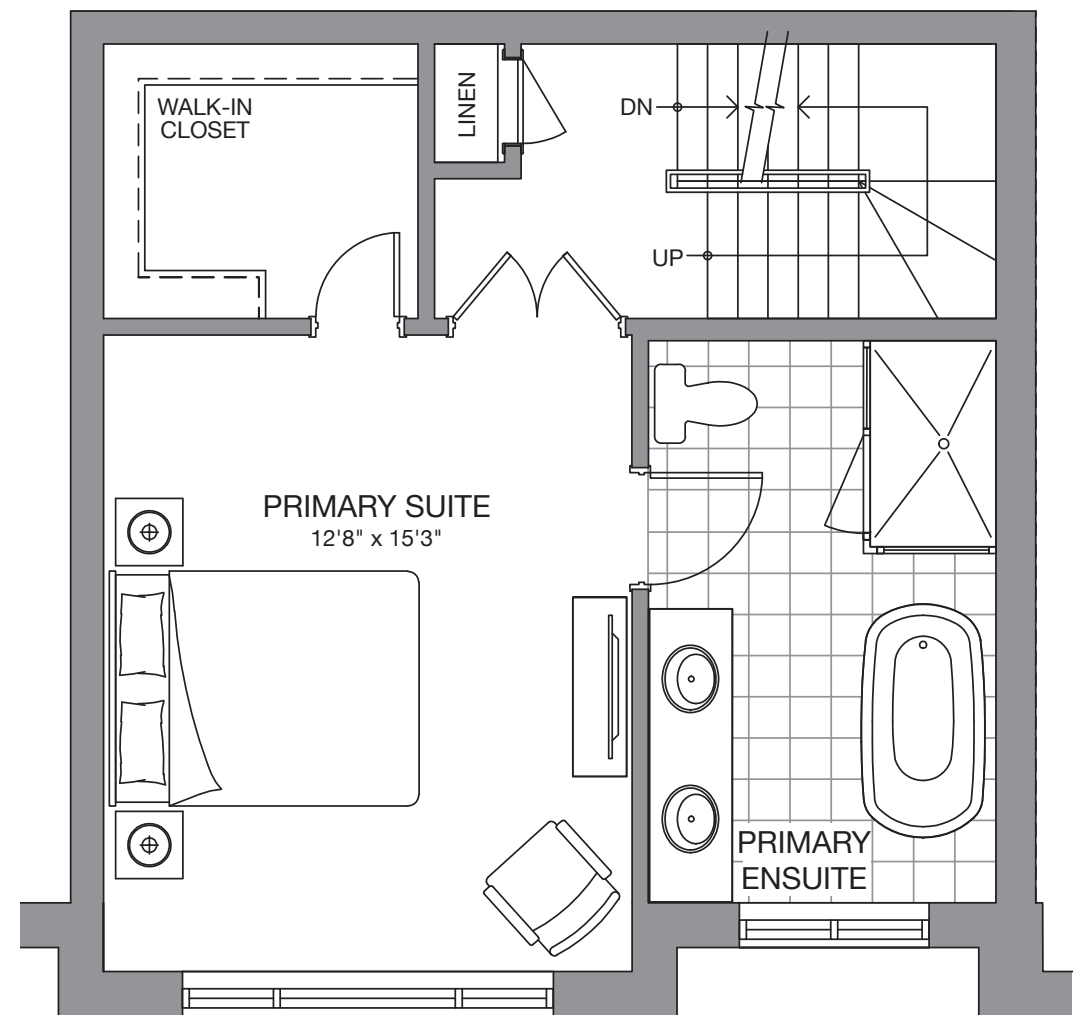
The Astoria

2,024 SQ. FT. (INCLUDES 315 SQ. FT. ROOFTOP TERRACE)

Flex Design

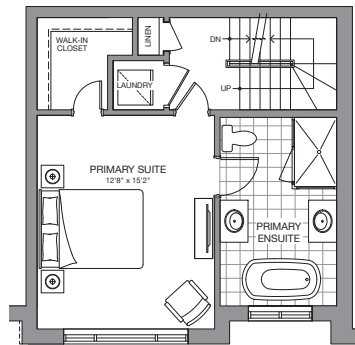


Ground Level
BLOCK A/B



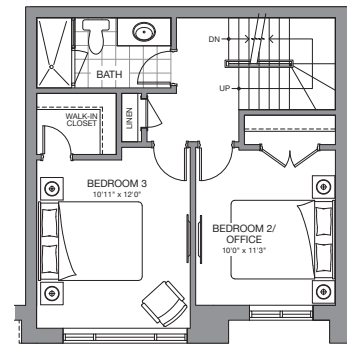
Second Level
PRIMARY SUITE

Customize your living space with these fabulous "Flex-design" options

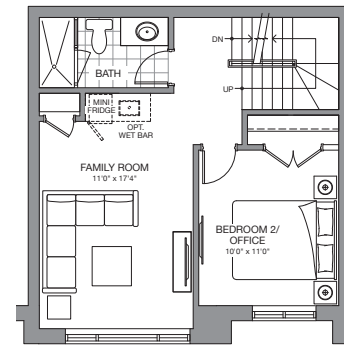


PRIMARY SUITE WITH LAUNDRY

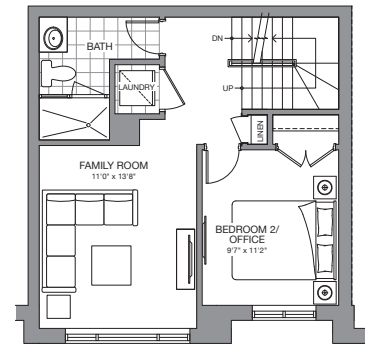
2nd level option



2 BEDROOM



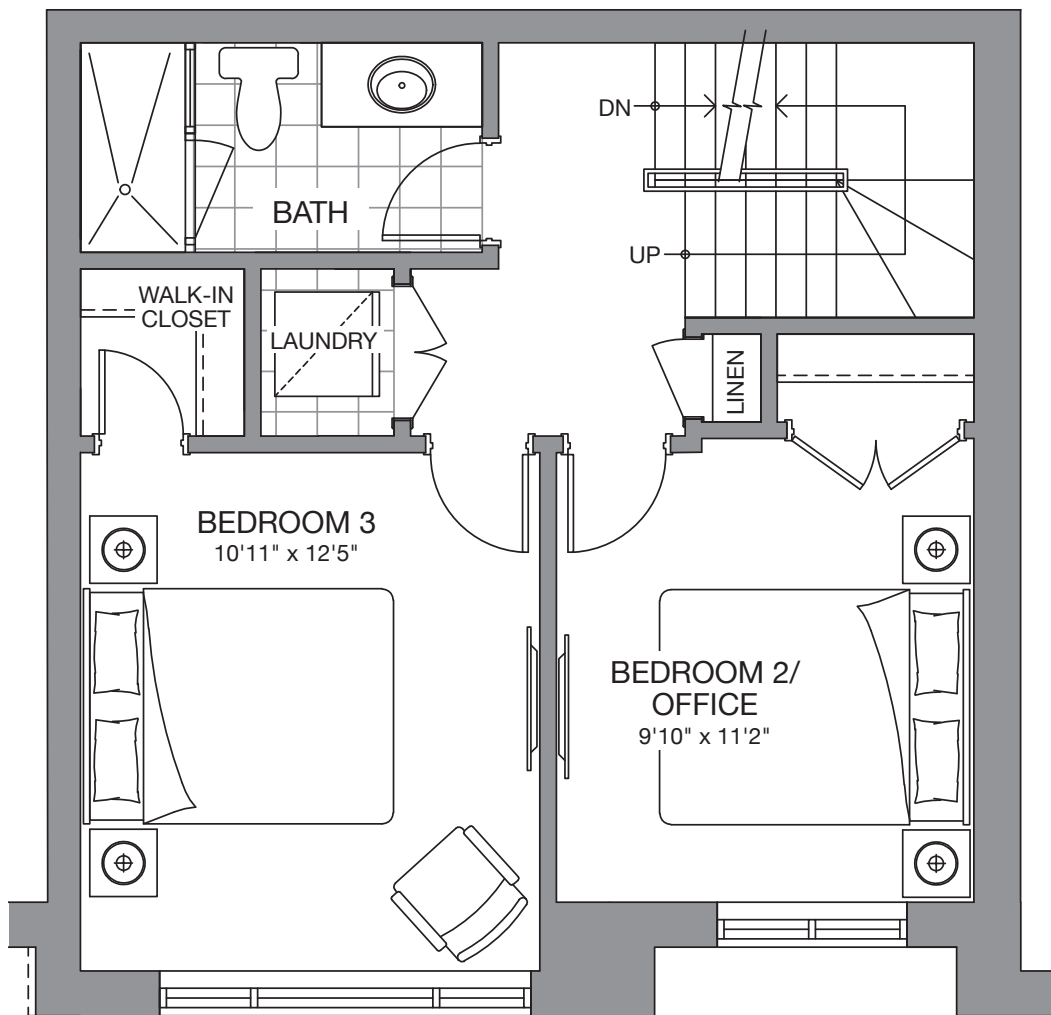
FAMILY ROOM & BEDROOM



FAMILY ROOM & BEDROOM WITH LAUNDRY

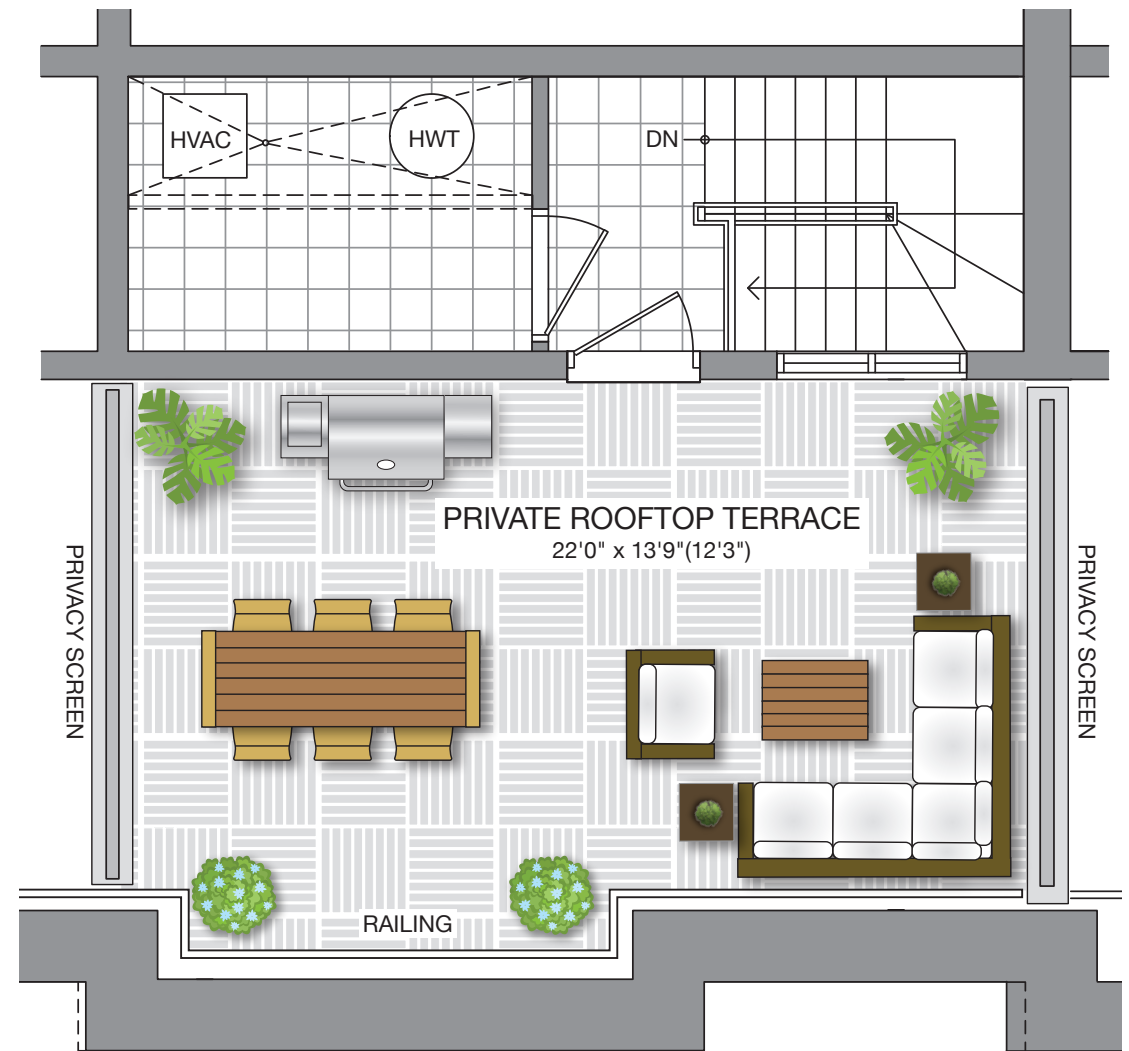
3rd level options

Flex Design



Third Level

2 BEDROOM WITH LAUNDRY



Private Terrace



At Conder Developments, our reputation precedes us. Every one of our new homes has been built with great design, innovation and care. It's your dream home, perfect down to the smallest detail, and crafted by an award-winning builder with decades of success.

ELEVEN ALTAMONT is an exclusive enclave of exquisitely designed and crafted residences. They offer unique designs, bigger living spaces, and the most luxurious features and finishes.

You can trust Conder Development's experience, our expertise, and our hands-on commitment to quality in design, construction and customer service. It's all there for you to see, in every home that bears the Conder Development brand, and every one of our communities across the GTA.

CONDER
DEVELOPMENTS







AltamontTowns.ca

CONDER
DEVELOPMENTS